



LIGHTING FOREVER

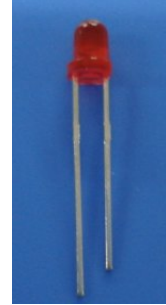
Technical Data Sheet

3.0mm Round Type LED Lamps

204-10SURD/S530-A3

Features :

- Choice of various viewing angles
- Available on tape and reel.
- Reliable and robust
- Pb free
The product itself will remain within RoHS compliant version.



Descriptions :

The series is specially designed for applications requiring higher brightness

The led lamps are available with different colors, intensities.

Applications :

- TV set
- Monitor
- Telephone
- Computer

CONFIDENTIAL

PART NO.	Material	Emitted Color	Lens Color
204-10SURD/S530-A3	AlGaInP	Brilliant Red	Red Diffused



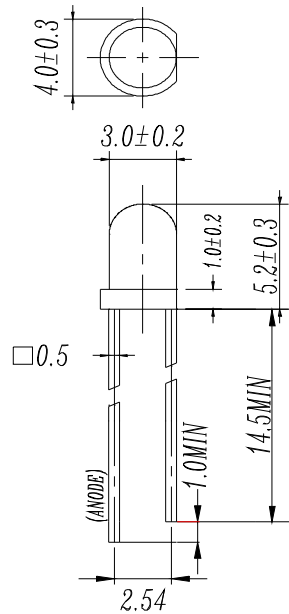
LIGHTING FOREVER

Technical Data Sheet

3.0mm Round Type LED Lamps

204-10SURD/S530-A3

Package Dimensions



- Notes:
1. All dimensions are in millimetres
 2. The height of flange must be less than 1.5mm(0.059").
 3. Without special declared, the tolerance is ±0.25mm.

Absolute Maximum Ratings at Ta = 25

Parameter	Symbol	Rating	Unit
Forward Current	I _F	25	mA
Operating Temperature	T _{opr}	-40 to +85	
Storage Temperature	T _{stg}	-40 to +100	
Soldering Temperature	T _{sol}	260	
Electrostatic Discharge	ESD	2000	V
Power Dissipation	P _d	60	mW
Peak Forward Current	I _{F(peak)}	60	mA
Reverse Voltage	V _R	5	V

Note: *1:Soldering time 5 seconds.

EVERLIGHT ELECTRONICS CO.,LTD.

<http://www.everlight.com>

Rev.: 3

Page: 2 of 6

Device Number: DLE-0002912

Prepared date: 2010/4/14

Prepared by:

Li ming

Revision : 3

LifecyclePhase: 正式發行

Release Date: 2010-04-15 14:24:24.0

Expired Period: Forever



LIGHTING FOREVER

Technical Data Sheet

3.0mm Round Type LED Lamps

204-10SURD/S530-A3

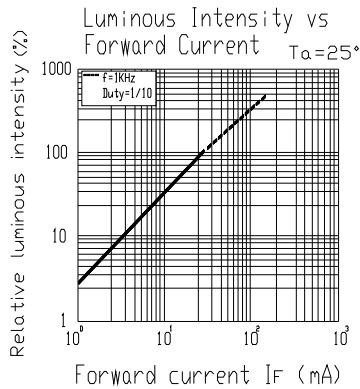
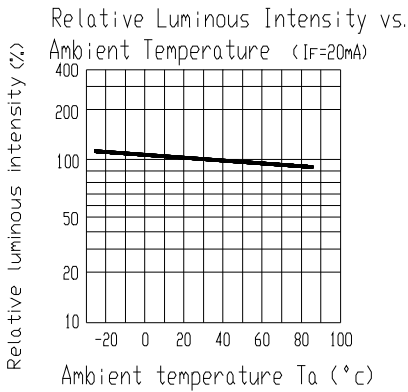
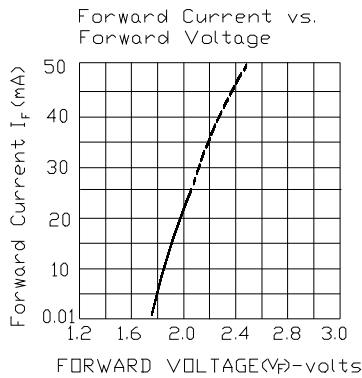
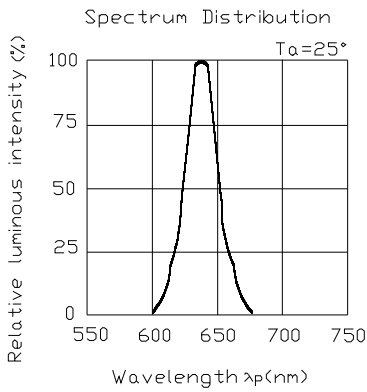
Electro-Optical Characteristics (Ta=25)

Parameter	Symbol	Condition	Min.	Typ.	Max.	Unit
Forward Voltage	VF	$I_F = 20 \text{ mA}$	/	2.0	2.4	V
Reverse Current	IR	$V_R = 5 \text{ V}$	/	/	10	μA
Luminous Intensity	Iv	$I_F = 20 \text{ mA}$	40	80	/	mcd
Viewing Angle	2 1/2	$I_F = 20 \text{ mA}$	/	45	/	deg
Peak Wavelength	ρ	$I_F = 20 \text{ mA}$	/	632	/	nm
Dominant Wavelength	d	$I_F = 20 \text{ mA}$	/	624	/	nm
Spectrum Radiation Bandwidth		$I_F = 20 \text{ mA}$	/	20	/	nm

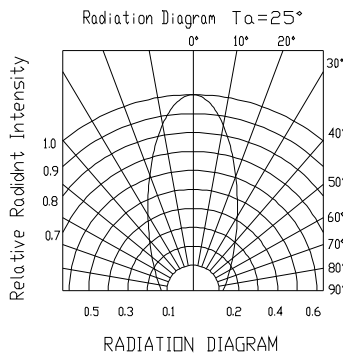
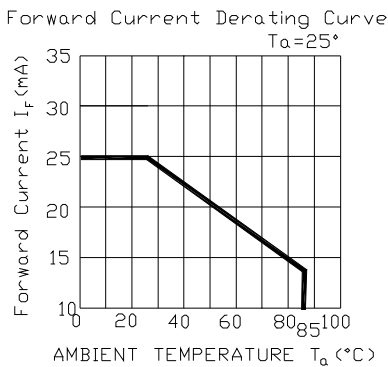
CONFIDENTIAL

Typical Electro-Optical Characteristic Curves:

(SUR)



NTIAL





LIGHTING FOREVER

Technical Data Sheet

3.0mm Round Type LED Lamps

204-10SURD/S530-A3

Reliability test items and conditions:

The reliability of products shall be satisfied with items listed below.

Confidence level : 97%

LTPD : 3%

NO	Item	Test Conditions	Test Hours/Cycle	Sample Size	Failure Judgment Criteria	Ac/Re
1	Solder Heat	TEMP : 260 ± 5	10 SEC	76 PCS	Iv Vf Ivt*0.5 U or Vf L	0/1
2	Temperature Cycle	H : +100 15min 5 min L : -40 15min	300 CYCLES	76 PCS		0/1
3	Thermal Shock	H : +100 5min 10 sec L : -10 5min	300 CYCLES	76 PCS		0/1
4	High Temperature Storage	TEMP : 100	1000 HRS	76 PCS		0/1
5	Low Temperature Storage	TEMP : -40	1000 HRS	76 PCS		0/1
6	DC Operating Life	TEMP : 25 IF = 20mA	1000 HRS	76 PCS		0/1
7	High Temperature / High Humidity	85 / 85% RH	1000 HRS	76 PCS		0/1

Note : Ivt : To test Iv value of the chip before the reliability test

Iv : The test value of the chip that has completed the reliability test

U : Upper Specification Limit

L : Lower Specification Limit



LIGHTING FOREVER

Technical Data Sheet

3.0mm Round Type LED Lamps

204-10SURD/S530-A3

Packing Quantity Specification

1.1000PCS/1Bag , 4Bags/1Box

2.10Boxes/1Carton

Label Form Specification



CPN: Customer's Production Number

P/N : Production Number

QTY: Packing Quantity

CAT: Ranks

HUE: Dominant Wavelength

REF: Reference

LOT No: Lot Number

Notes

- Above specification may be changed without notice. EVERLIGHT will reserve authority on material change for above specification.
- When using this product, please observe the absolute maximum ratings and the instructions for using outlined in these specification sheets. EVERLIGHT assumes no responsibility for any damage resulting from use of the product which does not comply with the absolute maximum ratings and the instructions included in these specification sheets.
- These specification sheets include materials protected under copyright of EVERLIGHT corporation. Please don't reproduce or cause anyone to reproduce them without EVERLIGHT's consent.

EVERLIGHT ELECTRONICS CO., LTD. Tel: 886-2-2267-2000, 2267-9936
 Office: No 25, Lane 76, Sec 3, Chung Yang Rd, Fax: 886-2267-6244, 2267-6189, 2267-6306
 Tucheng, Taipei 236, Taiwan, R.O.C <http://www.everlight.com>

EVERLIGHT ELECTRONICS CO.,LTD.

<http://www.everlight.com>

Rev.: 3

Page: 6 of 6

Device Number : DLE-0002912

Prepared date: 2010/4/14

Prepared by:

Li ming

Revision : 3

LifecyclePhase: 正式發行

Release Date:2010-04-15 14:24:24.0

Expired Period: Forever