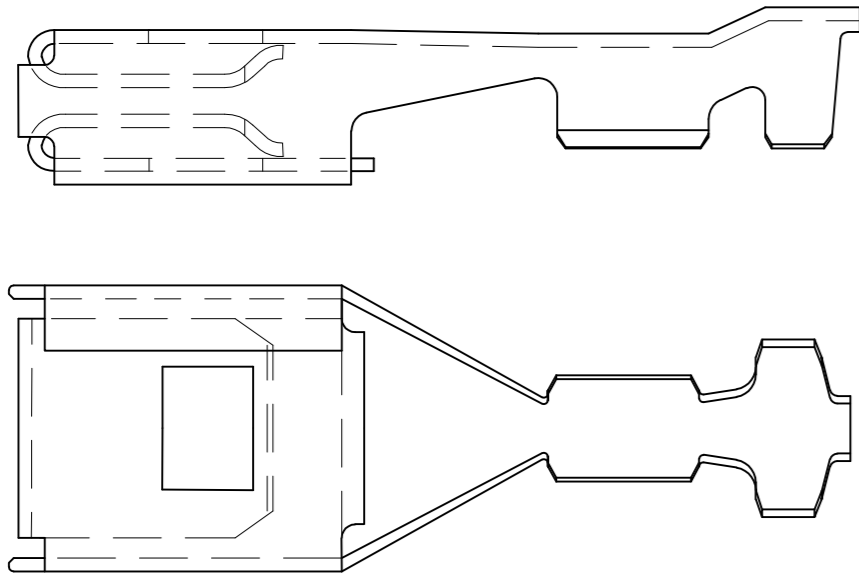


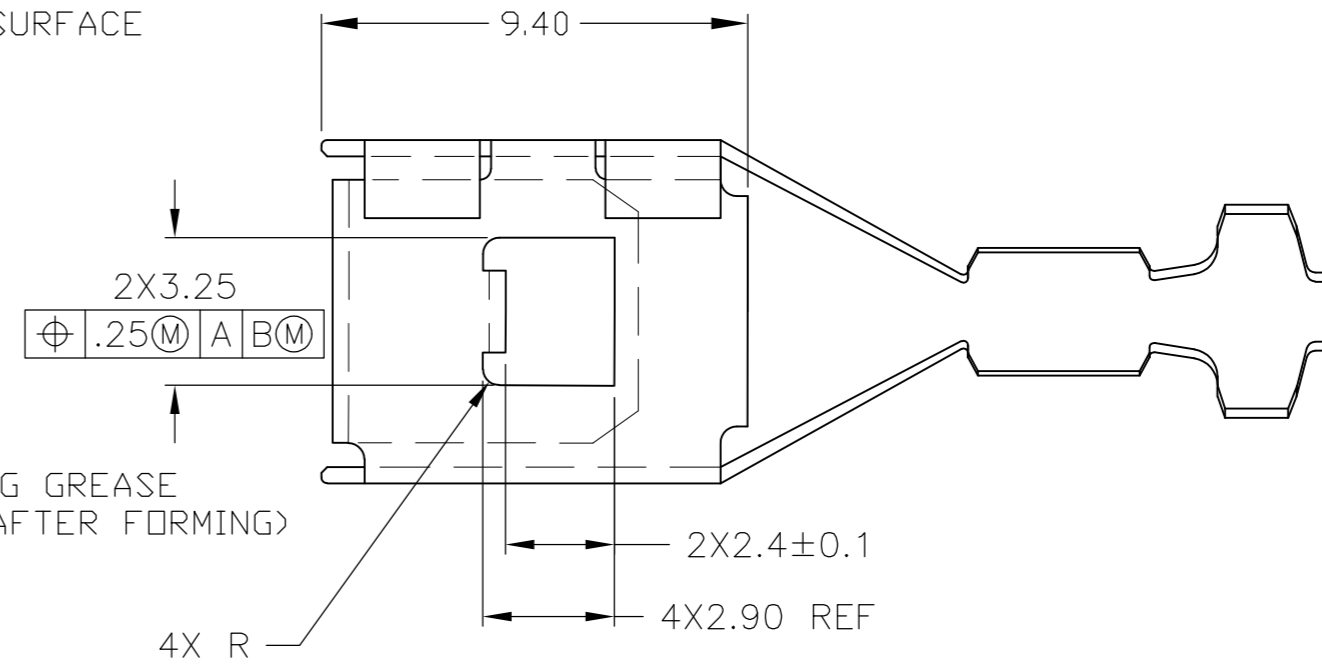
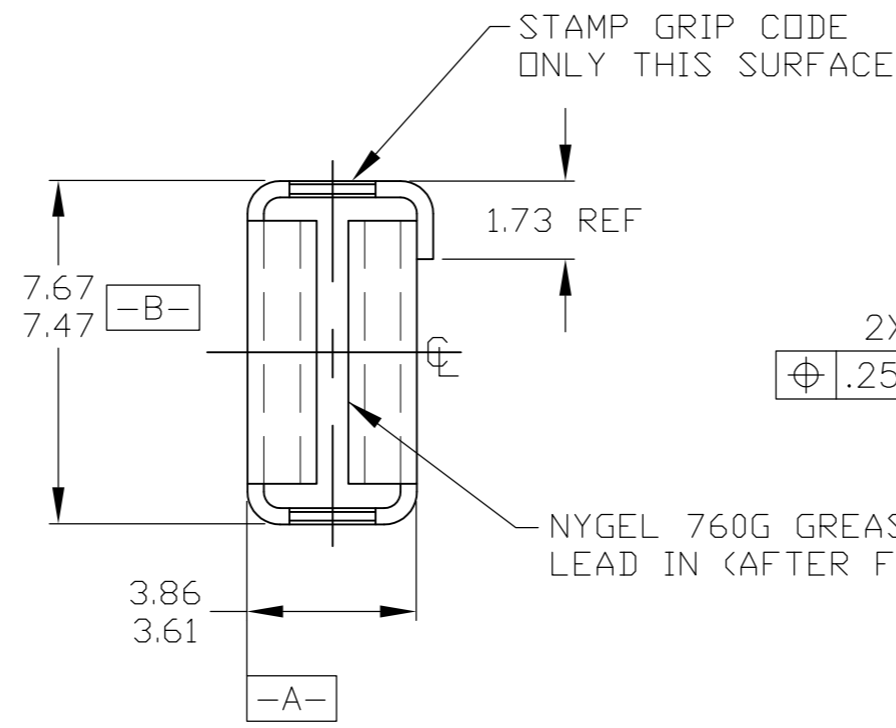
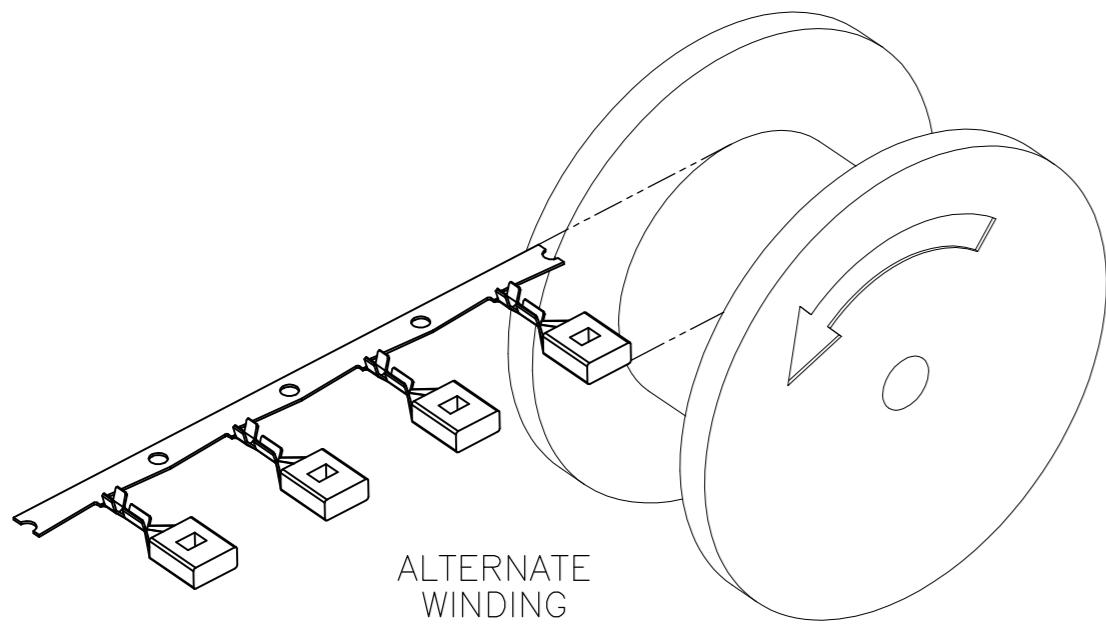
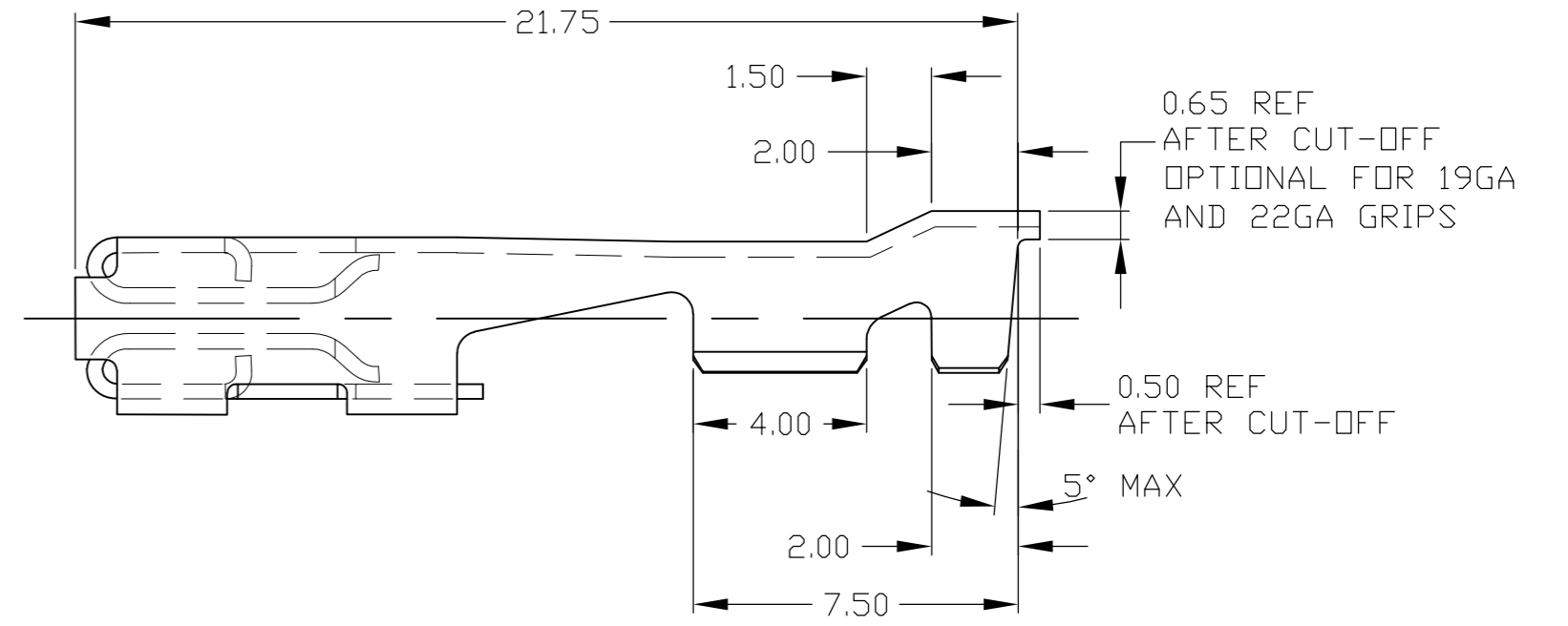
THIS DRAWING IS UNPUBLISHED. RELEASED FOR PUBLICATION
 © COPYRIGHT BY TYCO ELECTRONICS CORPORATION. ALL RIGHTS RESERVED.

LOC		DIST		REVISIONS			
P	LTR	DESCRIPTION		DATE	DWN	APVD	
	C	REVISED PER ECO-09-028142		11MAR2010	DD	WW	

UNLESS OTHERWISE SPECIFIED:
 1. CA19400 BRASS, TENSILE STRENGTH: 379-455 MPg
 (55-66 KSI) (HARDNESS REF R30T 55-62)



OPTIONAL CONSTRUCTION SHOWN



TE P/N REWOUND	TE P/N UNGREASED	TE P/N GREASED	WIRE SIZE	INSERTION-EXTRACTION REQUIREMENTS
-	1438231-7	-	22	USING A POLISHED STEEL BLADE 6.22 [.245] X 0.81 [.032] FIRST INSERTION FORCE MAX 10.0N [2.2LBS] OR ANY INDIVIDUAL READING TO A DEPTH OF INSERTION OF 5.25/5.5 (UNGREASED AND GEASED)
-	1438231-6	-	19	
-	1438231-5	3-1438231-3	18	
1438231-8	1438231-4	3-1438231-2	14	
-	1438231-3	-	13	FOR S.P.C. WITH CPK OF 16.7 MIN MAX FIRST INSERTION 11.0N [2.42LBS] BOTH GREASED AND UNGREASED
-	1438231-2	-	11	
1438231-9	1438231-1	3-1438231-1	10	FOURTH EXTRACTION FORCE MIN 6.8N [15.8LBS] UNGREASED FOURTH EXTRACTION FORCE MIN 4.0N [0.89LBS] (GREASED)
				NOTE: REF ABOVE FOR INSERTION DEPTH

THIS DRAWING IS A CONTROLLED DOCUMENT.		DWN JR BUSSARD 09MAY2003	Tyco Electronics Corporation Harrisburg, PA 17105-3608	
DIMENSIONS: MM		CHK DM REVAK 09MAY2003	NAME	
TOLERANCES UNLESS OTHERWISE SPECIFIED:		APVD DM REVAK 09MAY2003	CHART 250 TERMINAL FEMALE	
0 PLC ± - 1 PLC ± - 2 PLC ± 0.25 3 PLC ± - 4 PLC ± - ANGLES ± 2°		PRODUCT SPEC	SIZE A2	CAGE CODE 00779
MATERIAL		WEIGHT	DRAWING NO C=1438231	RESTRICTED TO
		CUSTOMER DRAWING	SCALE 5:1	SHEET 1 OF 1