

Customer Information Sheet

DRAWING No.: M50-353XX42

SHEET 2 OF 2

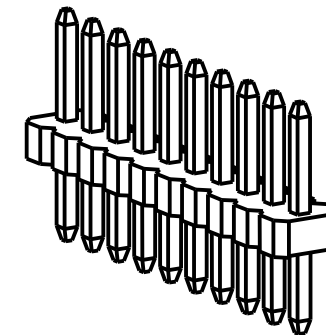
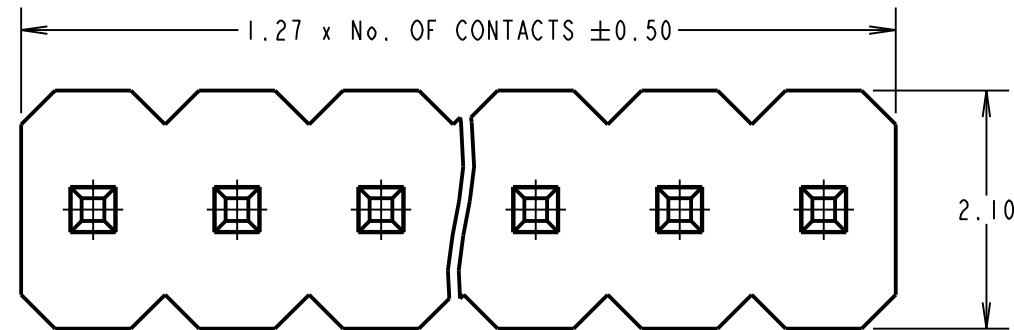
IF IN DOUBT - ASK

©

NOT TO SCALE

THIRD ANGLE PROJECTION

ALL DIMENSIONS IN mm



SPECIFICATION:

MATERIAL:
 MOULDING = PA9T, UL94V-0, BLACK
 CONTACT = BRASS
FINISH = 0.76-1.52 μ NICKEL ALL OVER,
 0.012 μ MIN GOLD ON CONTACT AREA,
 2.54-5.08 μ 100% TIN ON TAILS

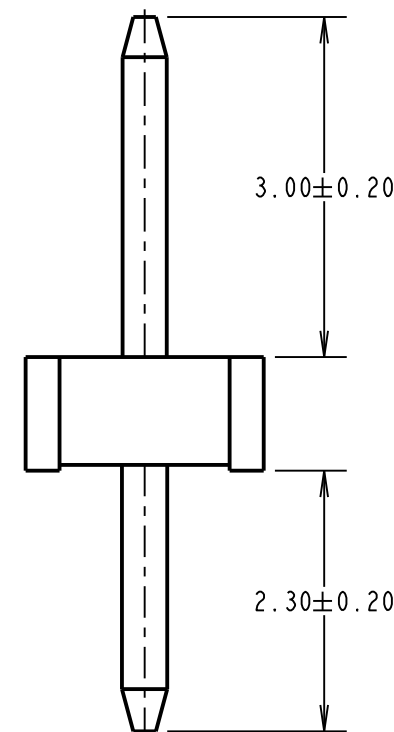
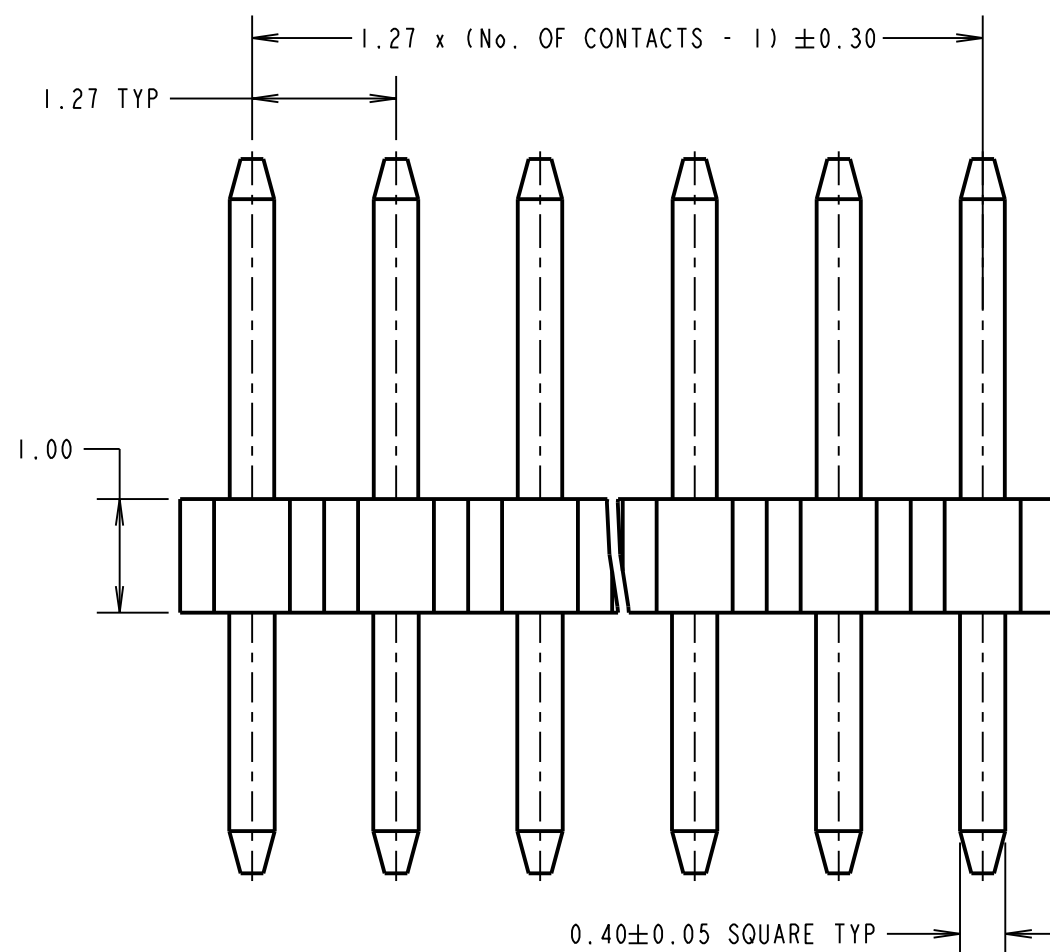
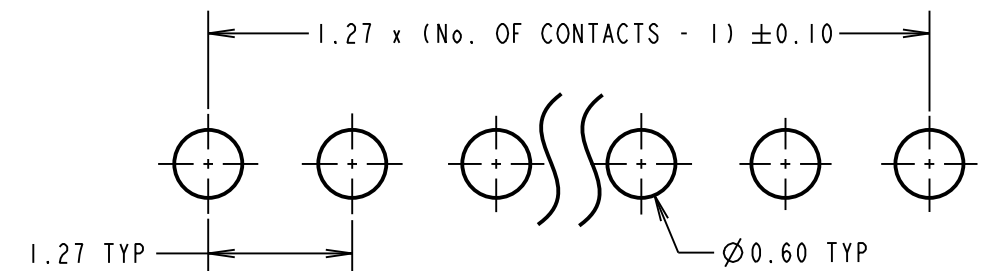
ELECTRICAL:
 CURRENT RATING = 1A
 CONTACT RESISTANCE = 20m Ω MAX
 INSULATION RESISTANCE = 1000M Ω MAX
 VOLTAGE PROOF = 500V AC FOR ONE MINUTE

MECHANICAL:
 DURABILITY = 500 CYCLES

ENVIRONMENTAL:
 OPERATING TEMPERATURE = -40°C TO +105°C

PACKING:
 BOX
 FOR COMPLETE SPECIFICATION, SEE COMPONENT SPECIFICATION C029XX (LATEST ISSUE)

RECOMMENDED PCB LAYOUT
 (TOLERANCE = ± 0.05)



ORDER CODE:
M50-353XX42

No. OF CONTACTS: _____
 02 TO 06, 08, 10, 20

MSP	2	30.09.16	20117
NAME	ISS.	DATE	C/NOTE
APPROVED:		M.PERREN	
CHECKED:		S.BENNETT	
DRAWN:		M.PERREN	
CUSTOMER REF.:			
ASSEMBLY DRG:			

HARWIN

www.harwin.com
 technical@harwin.com

THIS DRAWING AND ANY INFORMATION OR DESCRIPTIVE MATTER SET OUT HEREON ARE CONFIDENTIAL AND COPYRIGHT PROPERTY OF THE HARWIN GROUP AND MUST NOT BE DISCLOSED, LOANED, COPIED OR USED FOR MANUFACTURING, TENDERING OR FOR ANY OTHER PURPOSE WITHOUT THEIR WRITTEN PERMISSION.

TOLERANCES
 X. = ± 1 mm
 X.X = ± 0.25 mm
 X.XX = ± 0.10 mm
 X.XXX = ± 0.01 mm
 ANGLES = $\pm 5^\circ$
 UNLESS STATED

MATERIAL:
 SEE ABOVE
FINISH: SEE ABOVE
S/AREA: mm²

TITLE:
 1.27mm PITCH, SIL VERTICAL PIN HEADER
DRAWING NUMBER:
M50-353XX42
 SHT 2 OF 2