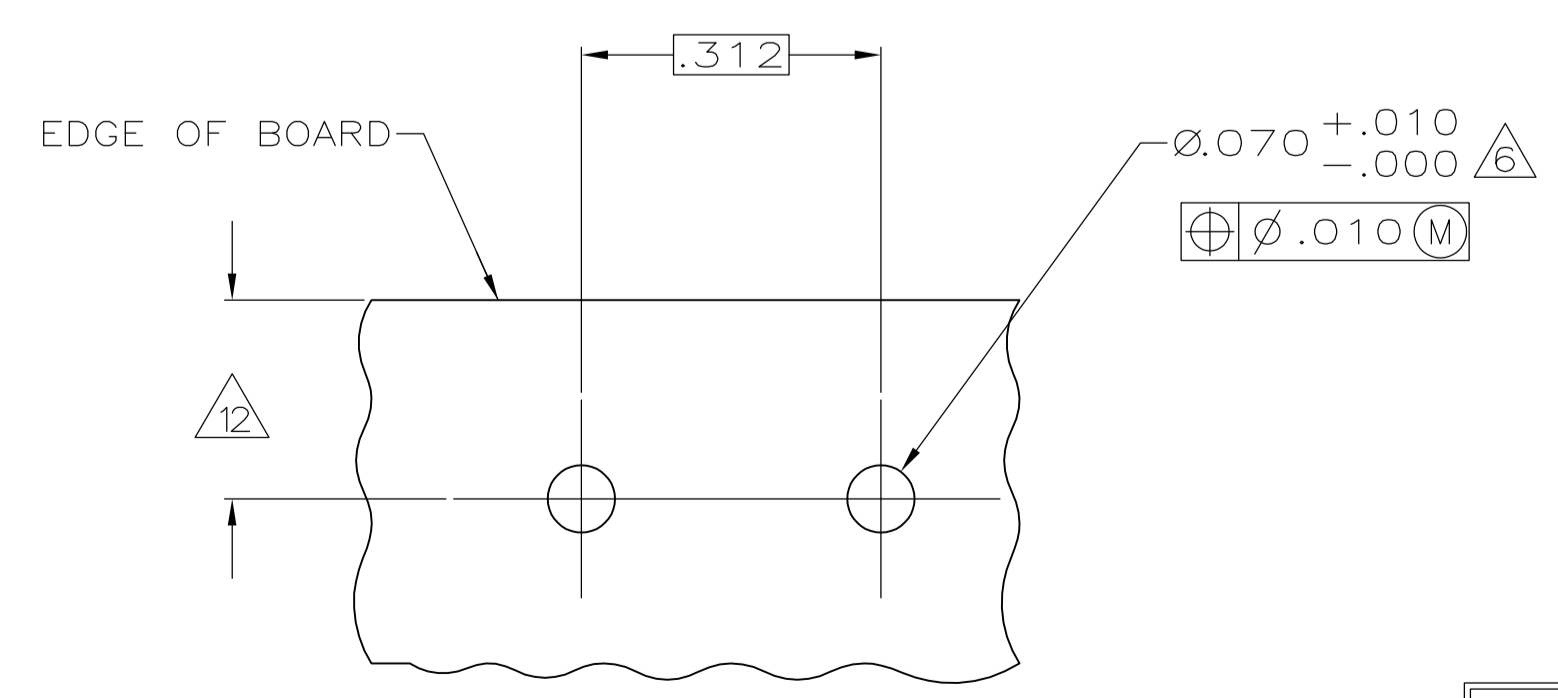
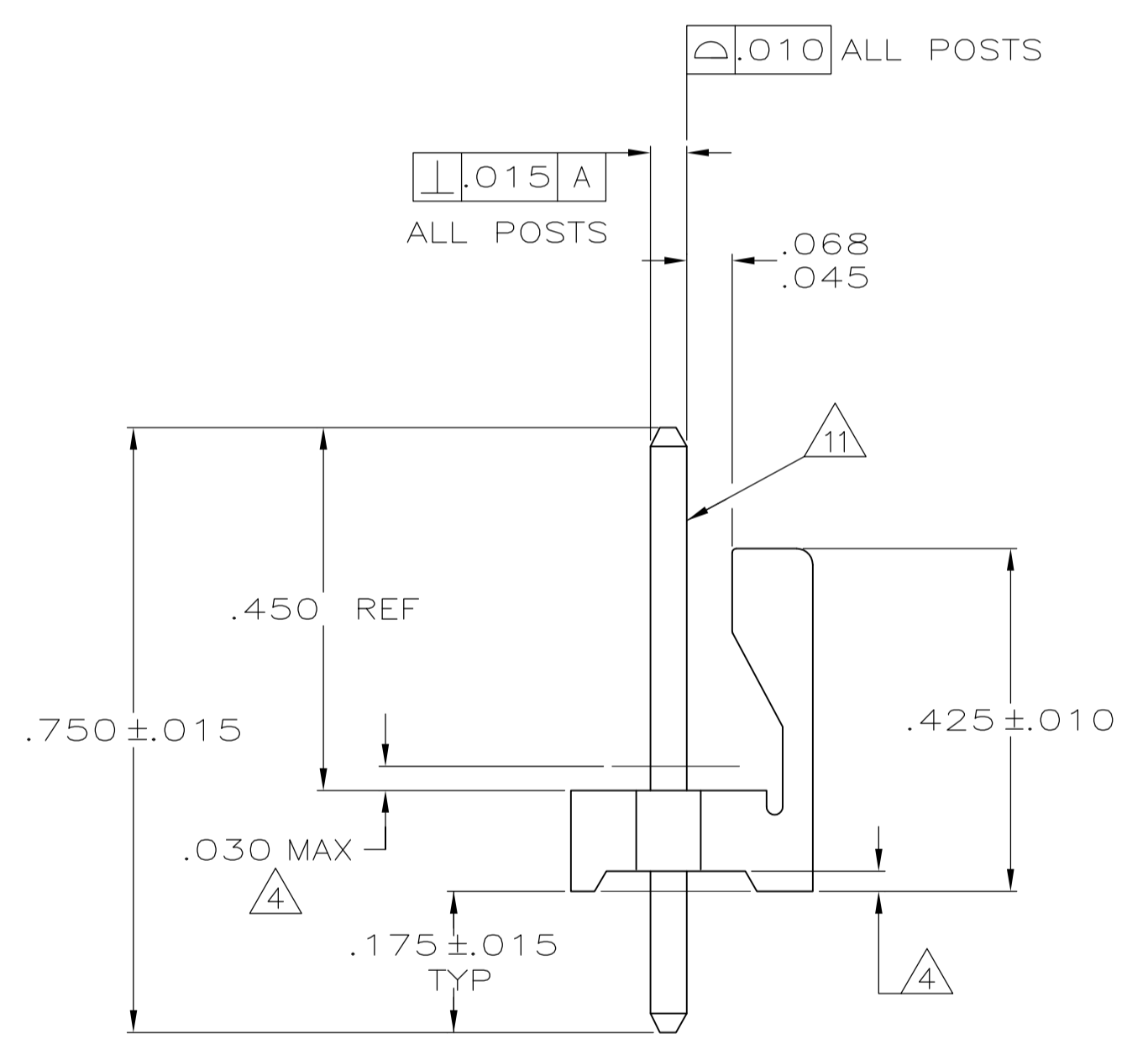
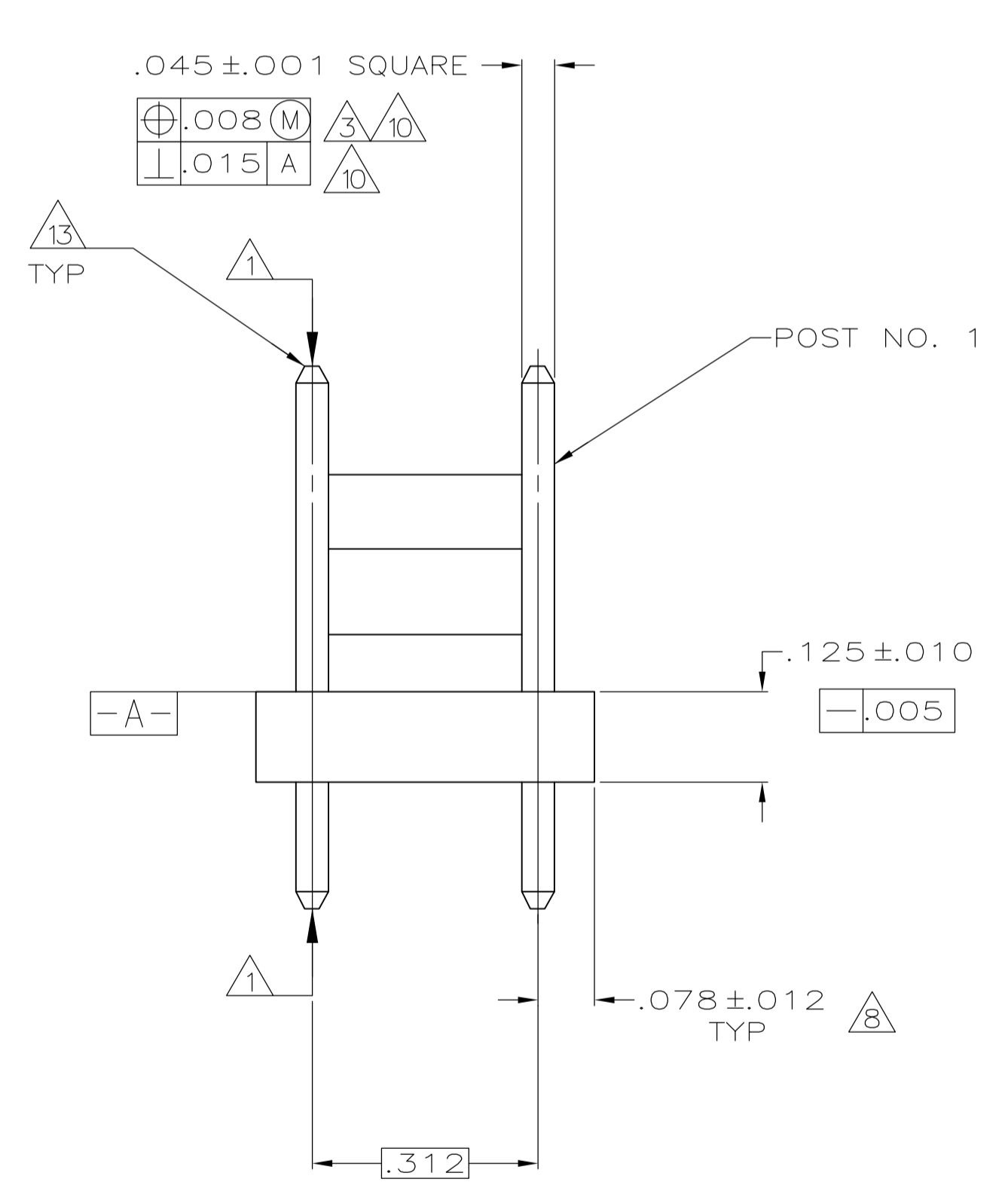
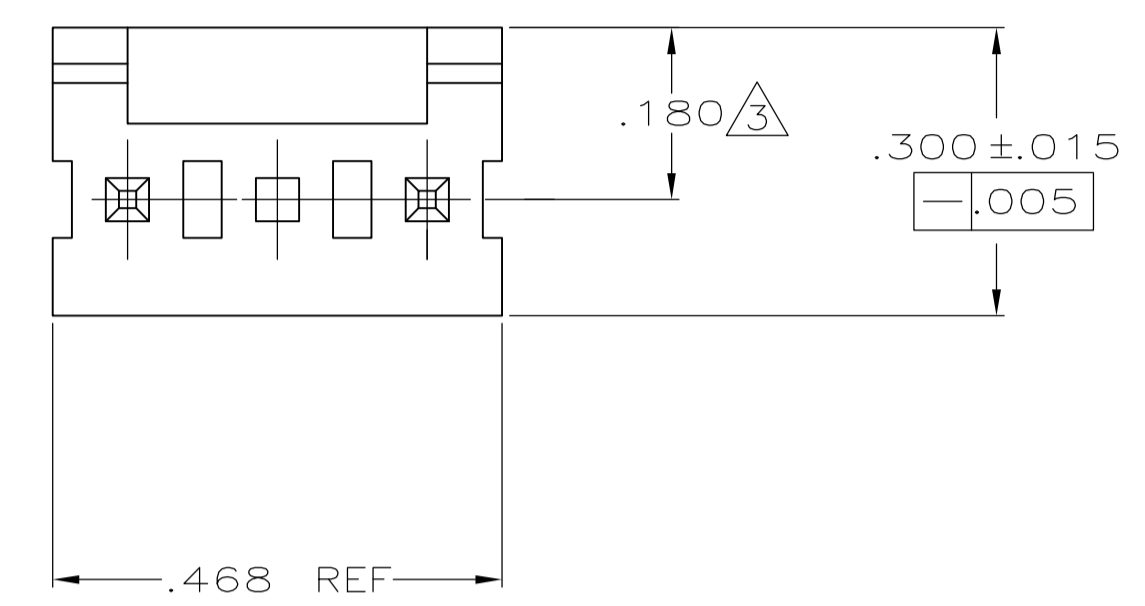


LOC		DIST		REVISIONS			
P	LTR	DESCRIPTION	DATE	DMN	APVD		
D		REVISED PER ECO-11-008968	02MAY11	HMR	SM		
D1		ECR-12-016748	30AUG13	M.T	D.Z		

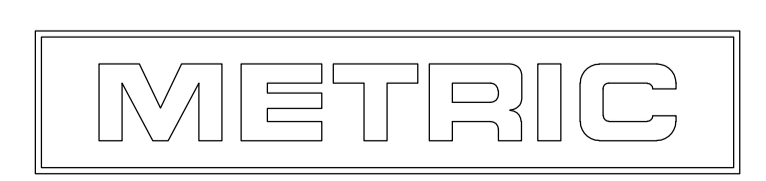


- 1 POST TO WITHSTAND 13 NEWTONS (3LBS.) MIN. AXIAL FORCE IN BOTH DIRECTIONS SHOWN WITHOUT DISLODGING.
- 2 TOLERANCES APPLY TO SOLDER SIDE OF BOARD.
- 3 MEASURED AT SURFACE -A-
- 4 PLASTIC FLASH PERMITTED IN THIS AREA.
- 5 PARTS COMPLY WITH AMP SOLDERABILITY SPEC. NO. 109-11-2.
- 6 ONE HOLE MAY BE UNDERSIZED (.065/.060 DIA.) FOR ASSEMBLY RETENTION DURING WAVE SOLDERING.
- 7 MATERIAL: HEADER-THERMOPLASTIC POLYESTER NON-FILLED 94V-0(NATURAL) POST-COPPER ALLOY (TIN PLATED)
- 8 COORDINATE DIMENSION APPLIES FROM CENTER OF ACTUAL FEATURE.
- 9 PLASTIC BURRS CAUSED BY CUT-OFF TOOLING ARE PERMITTED WITHIN THE MAXIMUM TOLERANCE ENVELOPE.
- 10 POST TO BE MEASURED WHEN STRIP IS HELD FLAT.
- 11 POST MUST WITHSTAND TWO 90° BENDS AGAINST EXTRUSION WITHOUT BREAKING.
- 12 DIMENSION SHOULD BE .175 MIN WHEN MATING WITH A MTA 156 CONNECTOR ASSEMBLY OR A SL-156 CONNECTOR ASSEMBLY.
- 13 PIN BURR OF .005 MAX. VERTICAL AND .003 MAX. HORIZONTAL PERMITTED AT POST TIPS ON BOTH ENDS.

IN	MM	IN	MM
.065	1.65	-	-
.063	1.60	.750	19.05
.060	1.52	.468	11.89
.045	1.14	.450	11.43
.030	0.76	.425	10.80
.015	0.38	.312	7.92
.012	0.30	.300	7.62
.010	0.25	.180	4.57
.008	0.20	.175	4.45
.005	0.13	.125	3.18
.003	0.08	.078	1.98
.001	0.03	.070	1.78
.000	0.00	.068	1.73
IN	MM	IN	MM

CONVERSION TABLE

D1 RECOMMENDED MOUNTING HOLE PATTERN FOR .109 ± 0.016 THICK P.C. BOARD



THIS DRAWING IS A CONTROLLED DOCUMENT.		DIN L. SMITH 9-30-93	2	644712-1
DIMENSIONS: INCHES		CHK R. SWING 9-30-93	POST NO OMITTED	PART NUMBER
TOLERANCES UNLESS OTHERWISE SPECIFIED:		APP'D D. CLARK 10-8-93	STE TE Connectivity	
0. PLC ± -	1. PLC ± -	NAME	MTA-156 HEADER ASSEMBLY, FRICTION LOCK, STRAIGHT .045 SQUARE POST, TIN PLATED, 3 POSITION, OMITTED POST	
2. PLC ± -	3. PLC ± .005	APPLICATION SPEC	SIZE: CAGE CODE: DRAWING NO: RESTRICTED TO	
4. PLC ± -	ANGLES ± -	WEIGHT	A1 00779 C=644712	1
MATERIAL	FINISH	CUSTOMER DRAWING	SCALE: 5:1	SHEET 1 OF 1 REV D1