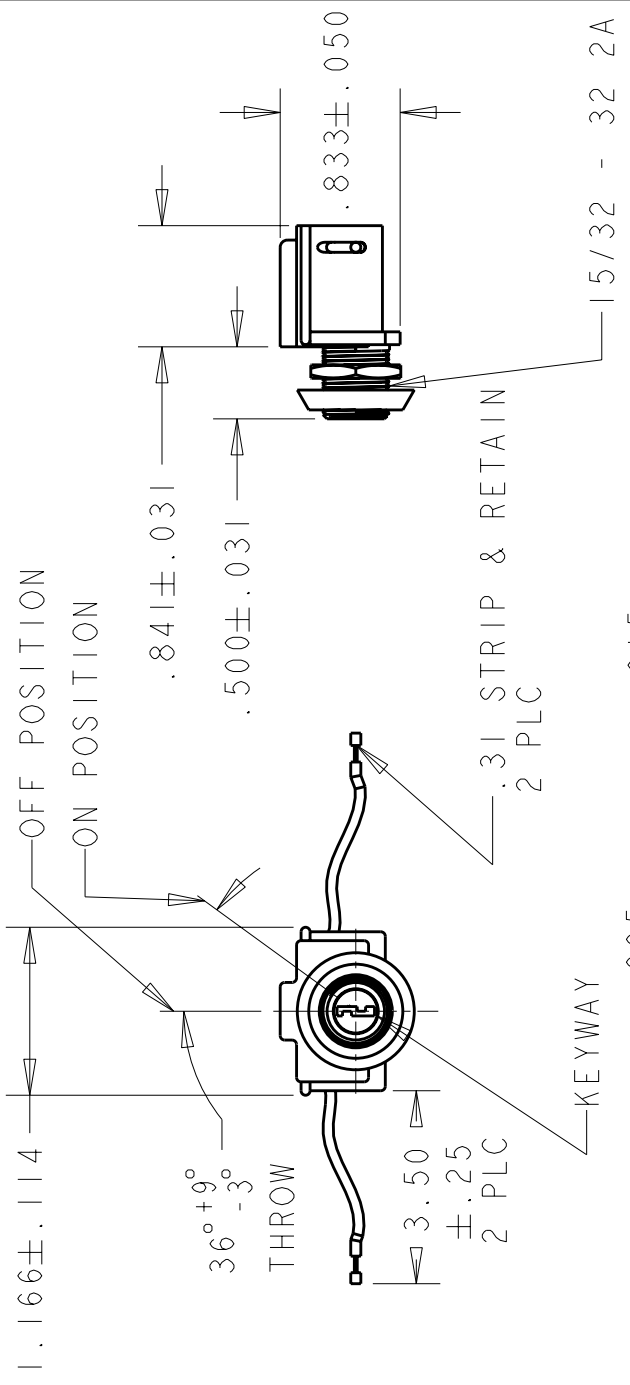


| LOC | | DIST | | REVISIONS | | | |
|-----|-----|--------------|-----------|-----------|------|--|--|
| P | LTR | DESCRIPTION | DATE | DWN | APVD | | |
| A | | ECO-06-23628 | 250CT2006 | MB | MW | | |
| | | | | | | | |
| | | | | | | | |



.062⁺.005₋ W X .030⁺.015₋ D

- NOTES:
- KEY REMOVABLE IN OFF POSITION ONLY.
 - KEYSWITCH SUPPLIED WITH 1 HEX NUT, 1 DRESS NUT AND 1 KEY.
 - WIRE: 18 AWG BOND WIRE, TINNED, PVC INSULATED, W/ 80°C AND 300 V RATING (UL 1007).
CONTACT MATERIAL: MOVABLE-BRONZE, SILVER PLATED;
STATIONARY-BRASS, SILVER PLATED.
CIRCUIT: SPST
ACTION: OFF-ON
 - ELECTRICAL SPECIFICATIONS:
KEYSWITCH RATING: 6A, 125V AC; 3A, 250V AC
DIELECTRIC VOLTAGE: 1000V RMS MIN.
INSULATION RESISTANCE: 100 MΩ MIN.
CONTACT RESISTANCE: 100 mΩ MAX.
CYCLE LIFE: 6000 OPERATIONS MIN.
TEMPERATURE RISE: <30°C AT 6000 OPERATIONS
 - ENVIRONMENTAL SPECIFICATIONS:
OPERATING TEMP: -18°C TO 65°C

1571487-1 PART NUMBER

| | | | | | | | |
|--|--|---------------------------|------------|---------------------------|--------|-------|--|
| DIMENSIONS: INCHES | | DWN | 12NOV2003 | MATERIAL | FINISH | | |
| TOLERANCES UNLESS OTHERWISE SPECIFIED: | | J.C. YOSLER | 07NOV2006 | | | | |
| 0 PLC ± | | CHK | M.WILBOURN | | | | |
| 1 PLC ±.03 | | APVD | M.WILBOURN | | | | |
| 2 PLC ±.015 | | PRODUCT SPEC | | | | | |
| 3 PLC ±.010 | | APPLICATION SPEC | | | | | |
| 4 PLC ± | | WEIGHT | | | | | |
| ANGLES ±1/2 | | CUSTOMER DRAWING | | | | | |
| | | SCALE 3:4 | | SHEET 1 OF 1 | | REV A | |
| | | CAGE CODE DRAWING NO | | RESTRICTED TO | | | |
| | | A4 00779 C=1571487 | | | | | |
| | | NAME | | KEYSWITCH, SPST | | | |
| | | tyco Electronics | | Tyco Electronics | | | |
| | | Harrisburg, PA 17105-3608 | | Harrisburg, PA 17105-3608 | | | |