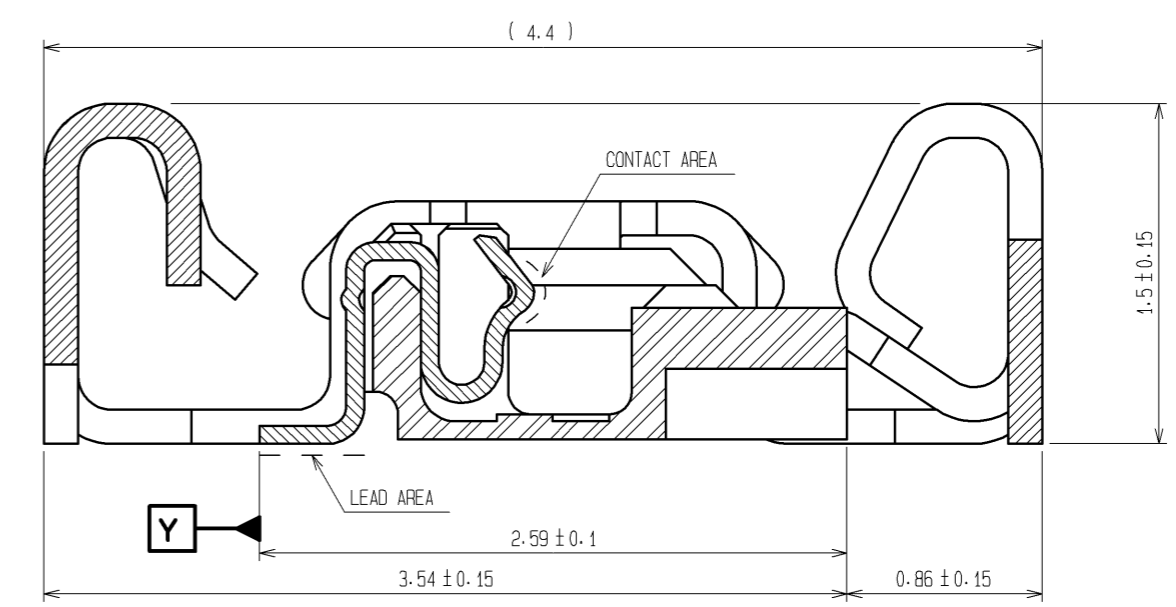
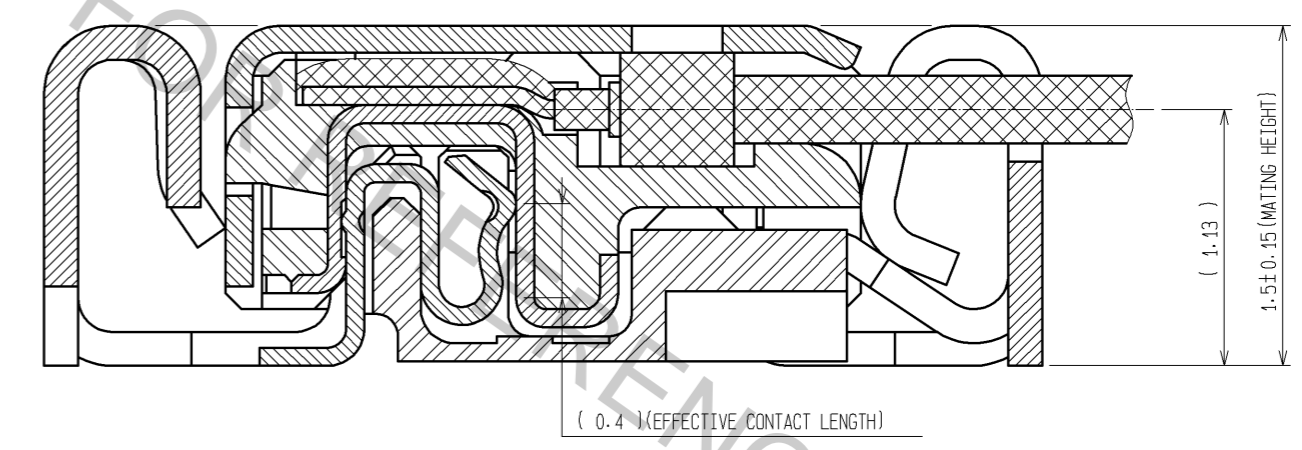


A-A(FREE) \triangle \triangle



B-B(FREE) \triangle \triangle



NOTES

1. LEAD CO-PLANARITY SHALL BE 0.1mm MAX.
2. STIFFENER IS REQUIRED FOR MOUNTING ONTO FPC IN ORDER TO AVOID STRESS BY FPC SLACKING TO MOUNTED CONNECTOR.
3. LOT No. INFORMATION IS SHOWN IN THE TABLE. EXAMPLE:8GFD
-YEAR:2008 MONTH:July DAY:15 LINE No.:4
4. UNMATING SHALL BE DONE WITH THE SPECIFIC EXTRACTION TOOL.
5. SOLDERING REWORK IS NOT POSSIBLE SINCE SOLDERING LEADS ARE COVERED BY METAL SHIELDING.

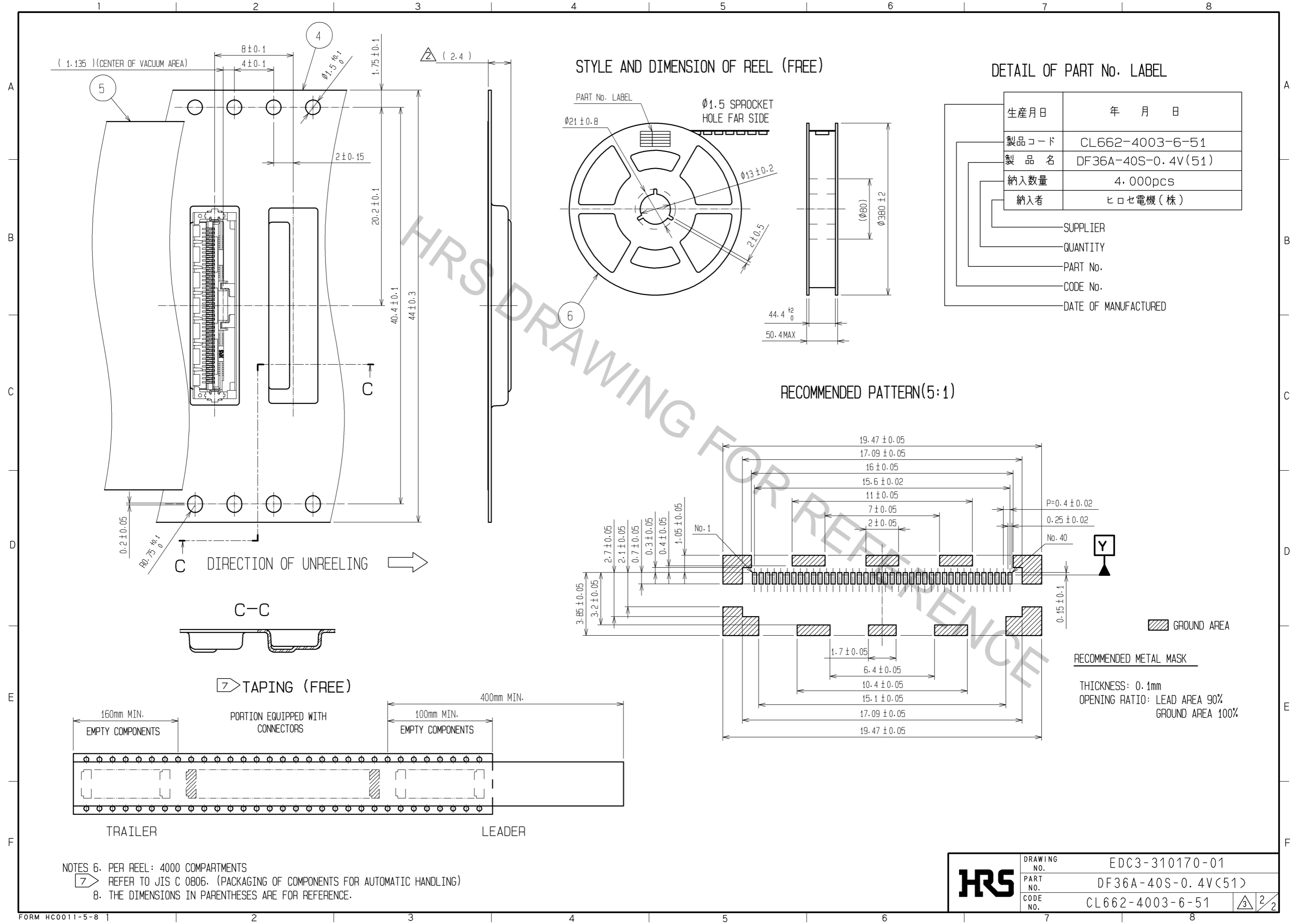
YEAR		MONTH		DAY						LINE No.	
YEAR	CODE	MONTH	CODE	DAY	CODE	DAY	CODE	DAY	CODE	LINE No.	CODE
10	0	Jan	A	1	1	11	B	21	M	1	A
11	1	Feb	B	2	2	12	C	22	N	2	B
12	2	Mar	C	3	3	13	D	23	P	3	C
13	3	Apr	D	4	4	14	E	24	Q	4	D
14	4	May	E	5	5	15	F	25	R	5	E
15	5	Jun	F	6	6	16	G	26	S	6	F
16	6	Jul	G	7	7	17	H	27	T	7	G
17	7	Aug	H	8	8	18	J	28	U	8	H
08	8	Sep	I	9	9	19	K	29	V	9	I
09	9	Oct	J	10	A	20	L	30	W	10	J
		Nov	K					31	X		
		Dec	L								

NO.	MATERIAL	FINISH	REMARKS	NO.	MATERIAL	FINISH	REMARKS
2	LCP		UL94V-0	6	PS		BLACK
				5	POLYESTER		CLEAR
1	PHOSPHOR BRONZE		CONTACT AREA : Au PLATING 0.3μm min LEAD AREA : Au PLATING 0.1μm min UNDER PLATING : Ni PLATING 2μm min	4	PS		CLEAR
				3	PHOSPHOR BRONZE		WHOLE AREA : Sn PLATING 1μm min UNDER PLATING : Cu PLATING 0.2μm min

UNITS	SCALE	COUNT	DESCRIPTION OF REVISIONS	DESIGNED	CHECKED	DATE
mm	5 : 1	4	DIS-H-003408	SI. ISHII	MN. KENJO	08.10.30

APPROVED	DATE	DRAWING NO.	PART NO.	CODE NO.
TY. OMA	07.01.11	EDC3-310170-01		
TS. SAKATA	07.01.11	DF36A-40S-0.4V(51)		
MN. KENJO	07.01.09	CL662-4003-6-51		
MN. KENJO	07.01.09			

Apr.1.2017 Copyright 2017 HIROSE ELECTRIC CO., LTD. All Rights Reserved.



NOTES 6. PER REEL: 4000 COMPARTMENTS
 7 REFER TO JIS C 0806. (PACKAGING OF COMPONENTS FOR AUTOMATIC HANDLING)
 8. THE DIMENSIONS IN PARENTHESES ARE FOR REFERENCE.

HRS	DRAWING NO.	EDC3-310170-01
	PART NO.	DF36A-40S-0.4V(51)
	CODE NO.	CL662-4003-6-51
		$\triangle 2/2$