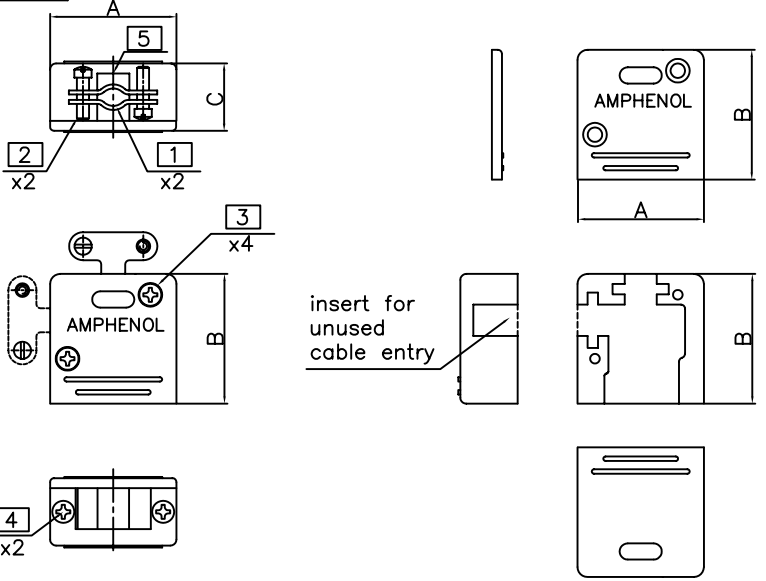
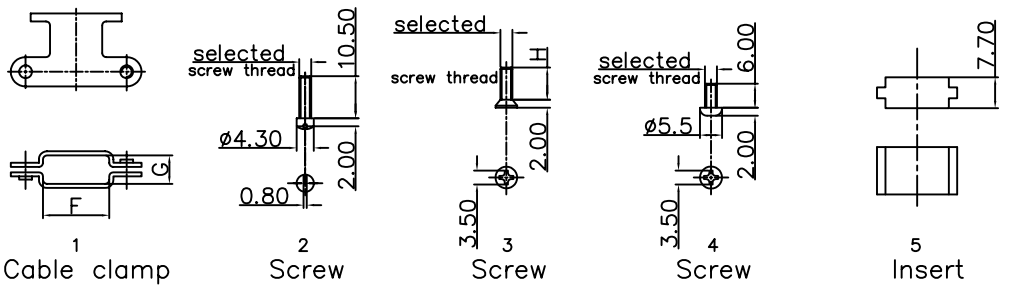


This document is the property of Amphenol Corporation and is delivered on the express condition that it is not to be disclosed, reproduced or used, in whole or in part, for manufacture or sale by anyone other than Amphenol Corporation without its prior consent, & that no right is granted to disclose or to use any information in this document.



09 pos.  
Drawing for sub-assembly  
L171370

09 pos.  
Drawing for side  
Plastic shell



Customer drawing

| Shell size | Commercial Part Number | Dimension |      |      |      |      |      |      |
|------------|------------------------|-----------|------|------|------|------|------|------|
|            |                        | Amax      | B    | Cmax | Dmax | Emax | Fmax | Gmax |
| E          | L171370                | 31.5      | 32.8 | 16.8 | 39.6 | 41.6 | 6.4  | 4.6  |
| A          | L171371                | 39.8      | 38.1 | 16.8 | 47.9 | 46.9 | 9.5  | 5.6  |
| B          | L171372                | 53.6      | 38.1 | 16.8 | 61.8 | 47.0 | 11.4 | 7.6  |
| C          | L171373                | 70.0      | 40.5 | 16.8 | 83.1 | 54.2 | 16.5 | 9.1  |



| REVISIONS |     |                     |          |          |
|-----------|-----|---------------------|----------|----------|
| SYM       | ECN | DESCRIPTION         | DATE     | APPROVED |
| 1         |     | Release new drawing | 12/09/09 | IP       |

**D-SUB TECHNICAL DATA**

Material and finish:

Shell: Thermoplastic, UL94-V0 color black

Screws: Steel, nickel plated, indication of thread  
Should be matched with the plastic shell

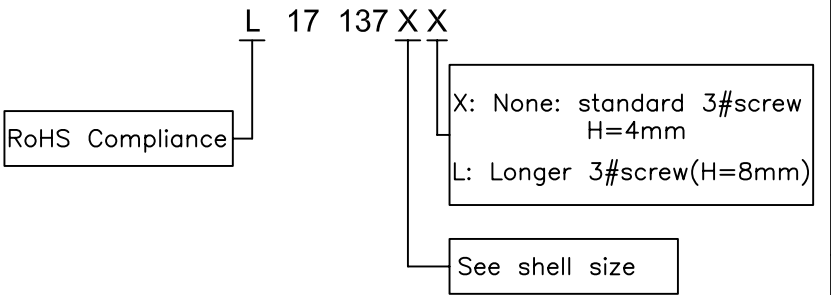
Cable clamp: Steel, nickel plated  
cable clamp with self-tapping screws

CLIMATIC : Temperature range -30 °C up to 90°C

MARKING : Amphenol-...(Series No.)

Commercial reference  
Manufacturing date

**PRODUCT CODE**

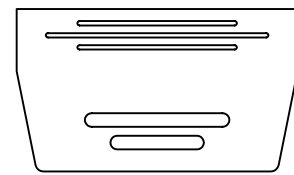
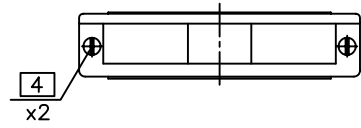
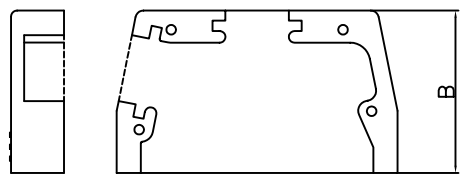
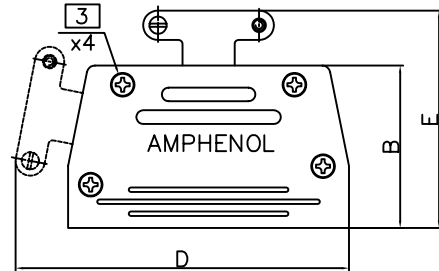
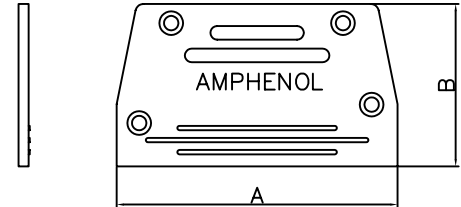
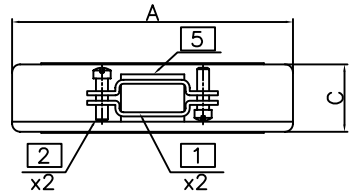


| UNLESS OTHERWISE SPECIFIED TOLERANCES |        | APPROVAL                            |           | DATE     |
|---------------------------------------|--------|-------------------------------------|-----------|----------|
| U.S.                                  | METRIC | DRAWN                               | Christine | 12/09/09 |
| .X +/-                                | 0.50   | CHECKED                             | tk.wang   | 12/09/09 |
| .XX +/-                               | 0.30   | CHECKED                             |           |          |
| .XXX +/-                              | 0.20   |                                     |           |          |
| FRACTIONS +/-                         | 5'     |                                     |           |          |
| ANGLES +/-                            |        |                                     |           |          |
| FOR MATERIALS AND FINISHES SEE NOTES  |        | DRAWING FILE : drawing\Sub\CL17137X |           |          |
| REMOVE SHARP EDGES                    |        | ANGLE OF PROJECTION                 |           |          |
| DIMENSIONS                            |        | SCALE NONE SHEET 1 OF 2             |           |          |
| U.S.                                  | INCHES | REV. 1                              |           |          |
| METRIC                                | MM     | C L17 137XX                         |           |          |

|          |             |       |                 |              |
|----------|-------------|-------|-----------------|--------------|
| Amphenol |             | TITLE | Hood, 17 Series |              |
| SIZE     | DRAWING NO. | SCALE | NONE            | SHEET 1 OF 2 |
| A4       | C L17 137XX |       |                 |              |

This document is the property of Amphenol Corporation and is delivered on the express condition that it is not to be disclosed, reproduced or used, in whole or in part, for manufacture or sale by anyone other than Amphenol Corporation without its prior consent, & that no right is granted to disclose or to use any information in this document.

D  
C  
B  
A



15/25/37 pos.  
Drawing for sub-assembly  
L171371/L171372/L171373

15/25/37 pos.  
Drawing for side  
Plastic shell

Customer drawing

| Shell size | Commercial Part Number | Dimension |      |      |      |      |      |      |
|------------|------------------------|-----------|------|------|------|------|------|------|
|            |                        | Amax      | B    | Cmax | Dmax | Emax | Fmax | Gmax |
| E          | L171370                | 31.5      | 32.8 | 16.8 | 39.6 | 41.6 | 6.4  | 4.6  |
| A          | L171371                | 39.8      | 38.1 | 16.8 | 47.9 | 46.9 | 9.5  | 5.6  |
| B          | L171372                | 53.6      | 38.1 | 16.8 | 61.8 | 47.0 | 11.4 | 7.6  |
| C          | L171373                | 70.0      | 40.5 | 16.8 | 83.1 | 54.2 | 16.5 | 9.1  |



| REVISIONS |     |                     |          |          |
|-----------|-----|---------------------|----------|----------|
| SYM       | ECN | DESCRIPTION         | DATE     | APPROVED |
| 1         |     | Release new drawing | 12/09/09 | IP       |

**D-SUB TECHNICAL DATA**

**Material and finish:**

- Shell: Thermoplastic, UL94-V0 color black
- Screws: Steel, nickel plated, indication of thread  
Should be matched with the plastic shell
- Cable clamp: Steel, nickel plated  
cable clamp with self-tapping screws
- CLIMATIC : Temperature range -30 °C up to 90°C
- MARKING : Amphenol-...(Series No.)  
Commercial reference  
Manufacturing date

**PRODUCT CODE**

L 17 137 X X

RoHS Compliance

X: None: standard 3#screw  
H=4mm  
L: Longer 3#screw(H=8mm)

See shell size

| UNLESS OTHERWISE SPECIFIED TOLERANCES |        | APPROVAL                            |           | DATE     |
|---------------------------------------|--------|-------------------------------------|-----------|----------|
| U.S.                                  | METRIC | DRAWN                               | Christine | 12/09/09 |
| .X +/-                                | 0.50   | CHECKED                             | Wk.wang   | 12/09/09 |
| .XX +/-                               | 0.30   | CHECKED                             |           |          |
| .XXX +/-                              | 0.20   |                                     |           |          |
| FRACTIONS +/-                         |        |                                     |           |          |
| ANGLES +/-                            | 5'     |                                     |           |          |
| FOR MATERIALS AND FINISHES SEE NOTES  |        | DRAWING FILE : drawing\Sub\CL17137X |           |          |
| REMOVE SHARP EDGES                    |        | ANGLE OF PROJECTION                 |           |          |
| DIMENSIONS                            |        |                                     |           |          |
| U.S.                                  | INCHES |                                     |           |          |
| METRIC                                | MM     |                                     |           |          |

|                          |             |              |
|--------------------------|-------------|--------------|
| Amphenol                 |             |              |
| TITLE<br>Hood, 17 Series |             |              |
| SIZE                     | DRAWING NO. | REV.         |
| A4                       | C L17 137XX | 1            |
| SCALE                    | NONE        | SHEET 2 OF 2 |

2

1

4

3

↑