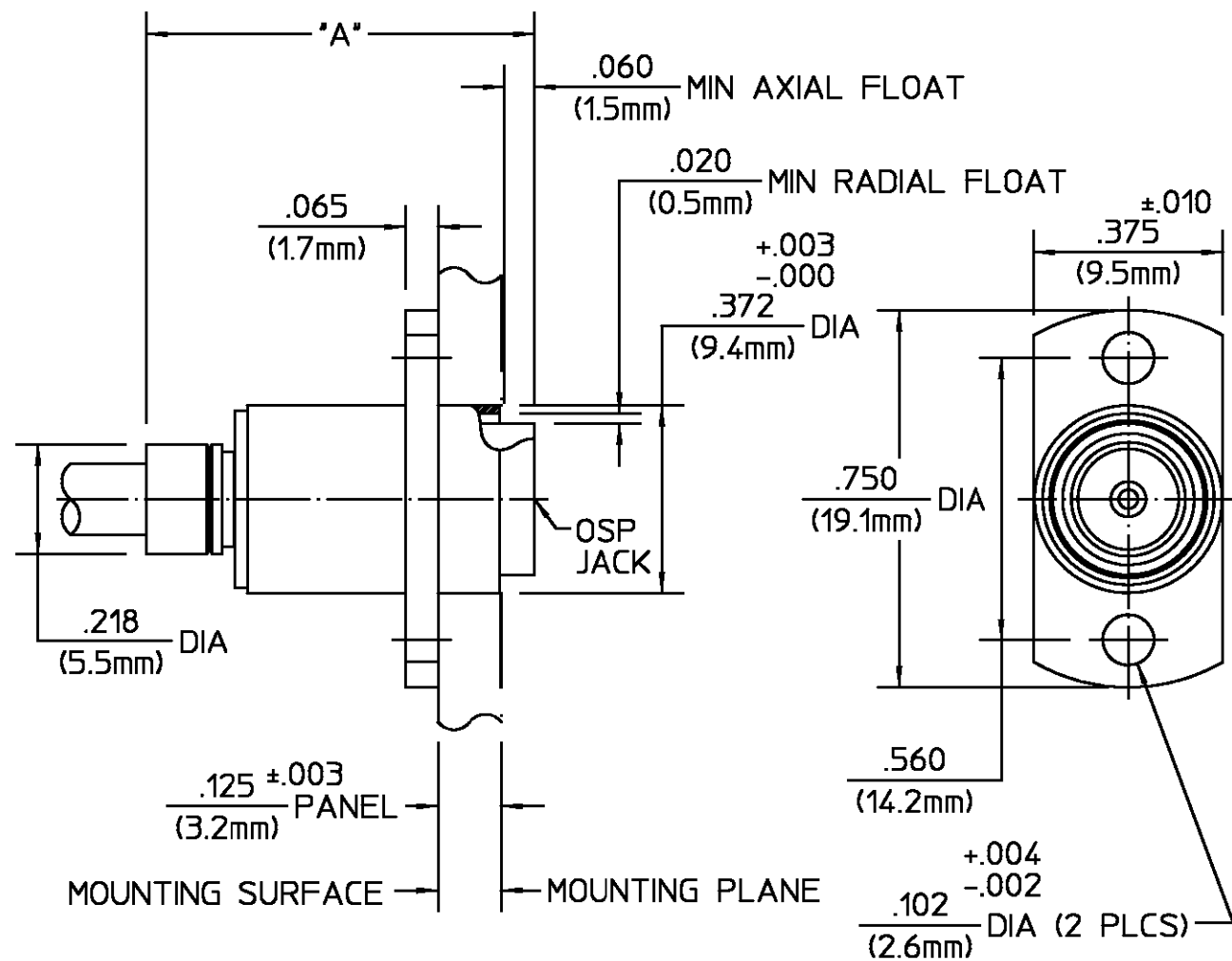


	DIM "A"
BEFORE CRIMPING	.891 REF (22.6mm)
AFTER CRIMPING	.770 ± .010 (19.6mm)

REVISIONS			
REV	DESCRIPTION	DATE	APPROVED
03 ₀	MAJOR CHANGES PER ECN 89-0612-1	M.C. 9-22-89	<i>Camel</i> 9-25-89



NOTES:

- DESIGNED FOR USE WITH .141 DIA (RG402/U) SEMI-RIGID CABLE.
- CAPTURED CENTER CONTACT.
- PICTORAL VIEW IS AFTER CRIMPING.
- MINIMUM STRAIGHT CABLE LENGTH IS .404
- IT IS SUGESTED TO BEND CABLE PRIOR TO CRIMPING.

HOUSING	STAINLESS STEEL PER ASTM-A484 AND ASTM-A582, TYPE 303	PASSIVATE PER ASTM-A380
WASHER		
BUSHING		
SPRING	STAINLESS STEEL	PASSIVATE PER QQ-P-35
DIELECTRIC	TFE FLUOROCARBON PER ASTM-D-1457, MIL-P-19468, AND FED. SPEC L-P-403	N/A
CENTER CONTACT	BERYLLIUM COPPER PER QQ-C-530, ALLOY 173	GOLD PLATE PER MIL-G-45204 OVER COPPER PLATE PER MIL-C-14550
CONTACT SLEEVE	BERYLLIUM COPPER PER QQ-C-530, ALLOY 173	GOLD PLATE PER MIL-G-45204
CONTACT RING	BERYLLIUM COPPER PER QQ-C-533, ALLOY 25	GOLD PLATE PER MIL-G-45204 OVER COPPER PLATE PER MIL-C-14550
RETAINING RING	BERYLLIUM COPPER PER QQ-C-533, ALLOY 25	NICKEL PLATE PER QQ-N-290 OVER COPPER PLATE PER MIL-C-14550
SPRING WASHER	BERYLLIUM COPPER PER QQ-C-533, ALLOY 25	NICKEL PLATE PER QQ-N-290

COMPONENT	MATERIAL	FINISH
-----------	----------	--------

CABLE ENTRY DIAMETER MINIMUM	
HOUSING	.143
CONTACT	.037

UNLESS OTHERWISE SPECIFIED DIMENSIONS ARE IN INCHES
TOLERANCE ON
FRAC. DEC. ANGLES
± 1/64 ± .005 ± °

These drawings and specifications are the property of Omni Spectra Incorporated and shall not be reproduced or copied or used in whole or in part as the basis for the manufacture or sale of item(s) without written permission.

DRAWN BY: D.CAM DATE: 3-27-85
CHECKED BY: MILA B. DATE: 12-5-85
APPROVED BY: R.GIERAS DATE: 12-6-85

USE ASS'Y PROCEDURE
408-04597
NO. AP. (45-052)

AMP Incorporated
140 Fourth Avenue
Waltham, MA 02451-7599

AMP

TITLE OSP FLOATING FLANGE MOUNT CABLE JACK COMPRESSION CRIMP ATTACHMENT

SIZE B	CODE IDENT NO. 26805	4506-7641-02	REV 03 ₀
SCALE 3:1		SHEET 1 OF 1	