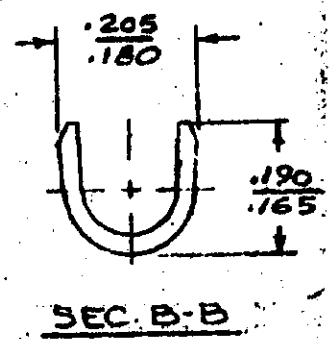
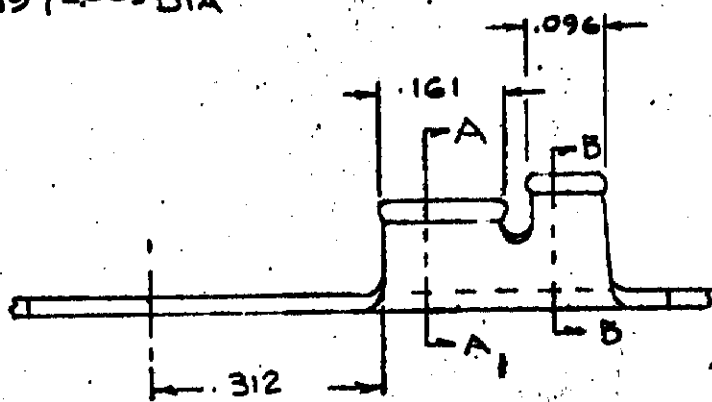
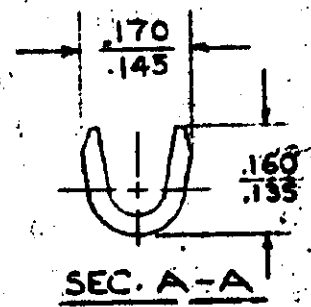
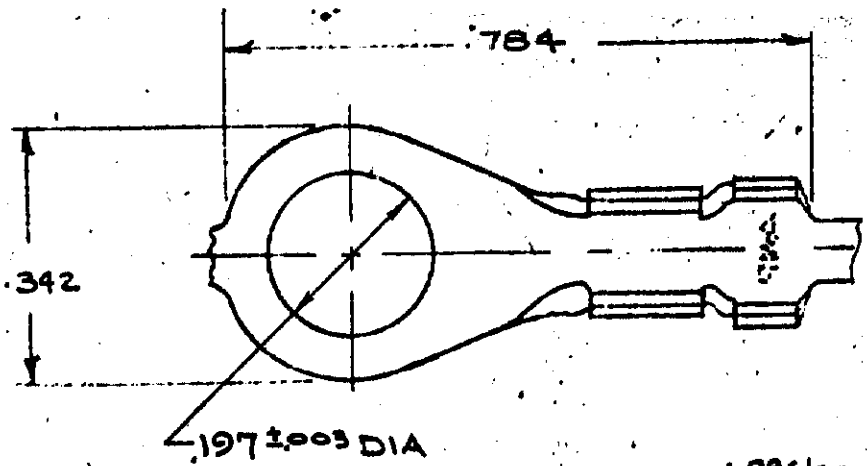


NUMBER 640008

S



CONTINUOUS STRIP, ON REELS

PART NO.
640008-1

DIMENSIONS IN INCHES. DO NOT SCALE PRINT.

UNPUBLISHED COPY NOT TO BE REPRODUCED NOR PUBLISHED WITHOUT WRITTEN PERMISSION OF AMP INCORPORATED.

©1973 BY AMP INCORPORATED. ALL RIGHTS RESERVED. AMP PRODUCTS COVERED BY PATENTS AND/OR PATENTS PENDING.

CUSTOMER COPY REFERENCE ONLY

.030 BRASS
BRIGHT TIN



AMP INCORPORATED
HARRISBURG, PENNA.

CLASS ———

TYPE ———

WIRE — RANGE — INSULATION
#20-16 | .100-.140

TOLERANCE EXCEPT AS NOTED ± .018 ± 1°

LOC A A NO 640008 REV A

A REV PER AF-6785

LTR REVISION RECORD ECN DR CHK DATE

DR G YETTER 8-9-73 DR A.E. TRAVIS 8-13-73

CHK 8-13-73 APP

NAME RING