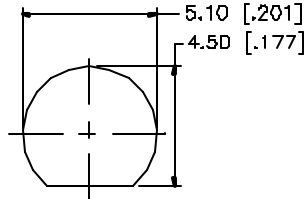
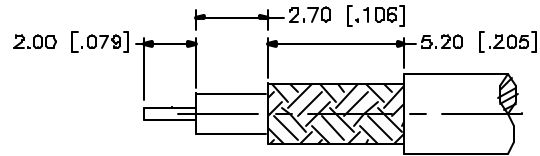


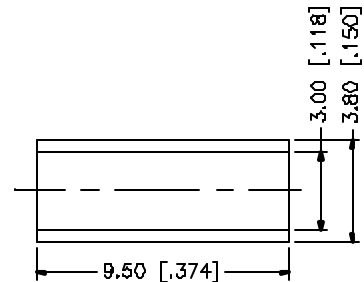
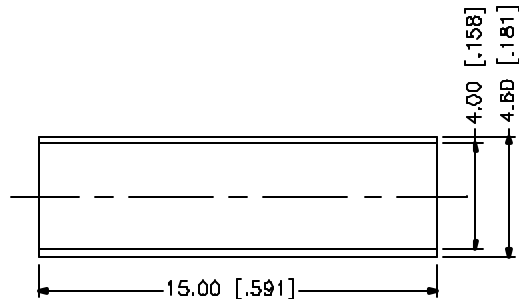
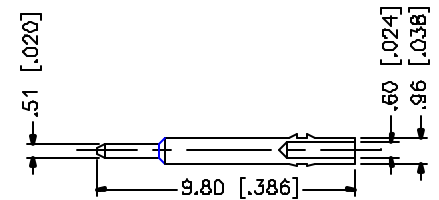
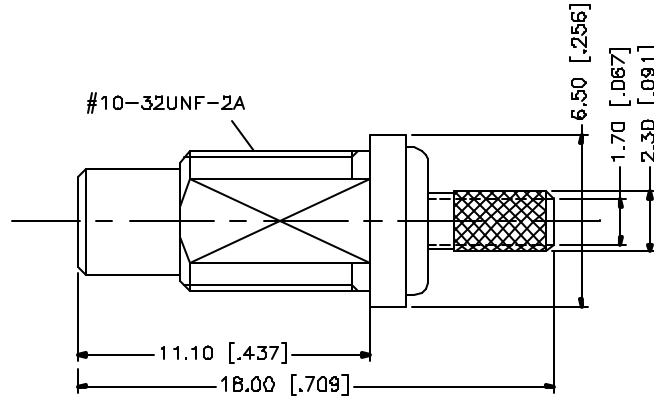
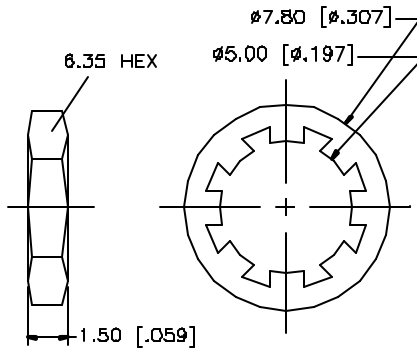
REV.	DATE	DESCRIPTION
A	03/27/05	UPDATE DRAWING FORMAT



RECOMMENDED MOUNTING HOLE



RECOMMENDED CABLE STRIPPING DIMS.



NOTES:

1. CRIMPED FERRULE  
HEX CRIMP SIZE .128"
2. MAX. PANEL THICKNESS = 2.4mm

QTY	DESCRIPTION	MATERIAL	FINISH	QTY	DO NOT SCALE DRAWING	APPROVALS	DATE	Amphenol Connex			
8					UNLESS OTHERWISE SPECIFIED DIMENSIONS ARE IN MILLIMETERS DIMENSIONS IN [ ] ARE IN INCHES AND FOR CUSTOMER REFERENCE ONLY.	DRAWN	G.R.S.	03/27/05	PART DESCRIPTION SMC BULKHEAD CRIMP JACK (FOR RG-174/U, 188A/U, 316/U)		
7	HEAT SHRINK TUBE			1	UNLESS OTHERWISE SPECIFIED TOLERANCES FOR MILLIMETERS ARE: 0.5 - 8mm ± 0.20mm 8 - 30mm ± 0.40mm 30 - 120mm ± 0.60mm	CHECKED					
6	HEX NUT	BRASS	GOLD	1	UNLESS OTHERWISE SPECIFIED TOLERANCES FOR INCHES ARE: .020 - .315 = ± 0.007" .315 - 1.180 = ± 0.015" 1.180 - 4.724 = ± 0.020"	ISSUED			DWG. NO. 152105.DWG		
5	LOCK WASHER	BRASS	GOLD	1		SHEET	1 OF 1				
4	FERRULE	COPPER	GOLD	1		CAD FILE	C:/152/152105.DWG				
3	CONTACT PIN	BRASS	GOLD	1							
2	INSULATOR	TEFLON	NATURAL	1							
1	BODY	BRASS	GOLD	1							