

NOTE:  
SUGGESTED MTG. HOLE  $\phi$ .180  
HARDWARE IS INCLUDED

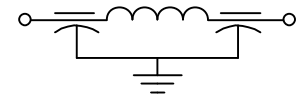
13

CAPACITANCE	.028 $\mu$ F - .120 $\mu$ F
TEMP. RANGE	-55°C TO 125°C
CURRENT	10 AMP MAX.
WORKING VOLTAGE	85°C 100 VDC 125°C 70 VDC
DC RESISTANCE	.01ohms MAX.
IL=PER MIL-STD-220, @25°C N/L	

MIN. NO LOAD

FREQ. MHz	I.L. (db)
1	10
3	14
10	38
30	65
--	--
100	75
300	75
1 GHz	75

SCHEMATIC



MARKING:

PART: S001 (FAIRVIEW)  
S001(M) (MEXICO)

BAG: SCI-1293-001  
DATE CODE  
QTY/BAG (200 MAX.)

13	12	11	10	9	8	7	6	5	4
CN 51849-ENG	CN 29708-CPD	CN 10869-CPD	CN 207992	CN 207674	CN 207260	CN 201766	CN 189900	CN 181176	CN 176583 REDRAWN

REV. NO.  
CHANGE NOTICE

TOLERANCES UNLESS OTHERWISE SPECIFIED

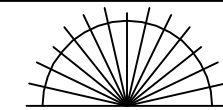
Fractions  $\pm$  1/64

Dec. .xx $\pm$

Dec. .xxx $\pm$ .010

Angles  $\pm$ 0° 30'

CODE IDENT. NO.  
DLSP2



SPECTRUM CONTROL INC.

Dwn. KEVERLINE

Date 11-23-09

Engr. B.DEVINE

Scale NONE

FAIRVIEW  
PENNSYLVANIA

Description

Pi, RESIN SEAL FILTER

1293-001