

NUMBER
C-180913

- 180913 CLEAR Polyamide 6.6
- 1 RED *
 - 3 BLUE *
 - 5 BLACK *
 - 7 GRAY *
 - ORANGE *

* NOT YET RELEASED FOR PRODUCTION.

OPTIONAL WAY TO MAKE

DRAFT OPTIONAL

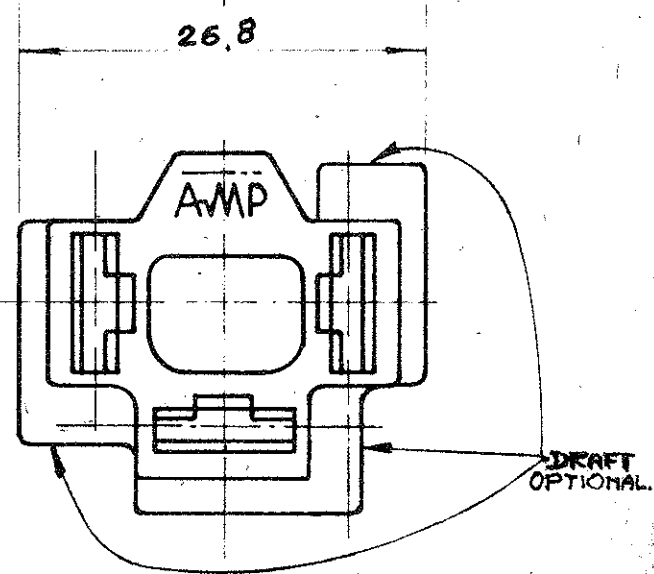
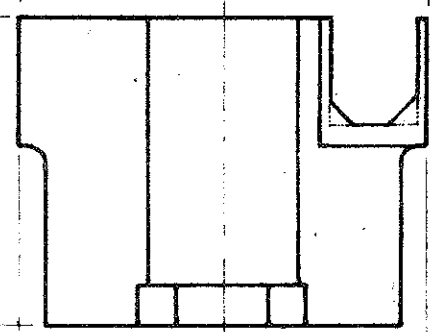
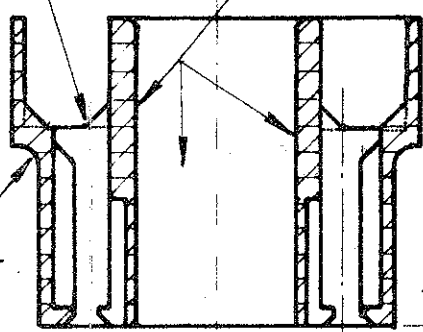
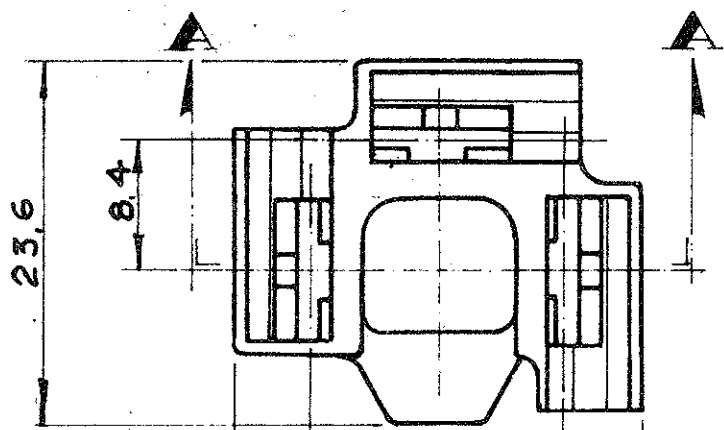
RADII
OPTIONAL

SEC. **AA**

POLYPROPYLENE	3-180913-0	NOTE 1
A.B.S. BLACK	2-180913-5	NOTE 1
A.B.S. NATURAL	2-180913-0	NOTE 1
RHODIACETA A 21212 BLACK	1-180913-5	
Polyamide 6.6	180913	
MATERIAL	AMP PART NUMBER	

NOTE

1) NOT PRODUCED BY AMP ITALY



DIMENSIONS IN INCHES. DO NOT SCALE PRINTING

M1	REVISED PER ECO-10-000445	KK	HMR	29 JAN 10
M	Revised	EB.		9-8 83
L	UP-DATED MATERIAL TABLE			29/6/1983
K	UP-DATED COLOR TABLE			MARCH 77
J	ADDED OPTIONAL WAY TO MAKE			22/15 APR '75
H	Aggiornato			May 73
G	REVISED			25-77
F	ADDED NOTES OPTIONAL	B.G.		Nov. 19-78
E	REVISED & REDRAWN	A.H.		MAY 28-68
LTR	REVISION RECORD	DR	CHK	DATE

© 1962 BY AMP INCORPORATED ALL RIGHTS RESERVED. AMP PRODUCTS COVERED BY PATENTS AND/OR PATENTS PENDING.

CUSTOMER COPY
REFERENCE ONLY

MATERIAL AND FINISH
SEE TABLE



CLASS AUTO-MACH.

WIRE RANGE INSULATION

TYPE 312 FLAG FASTEN-ON

TOLERANCE EXCEPT AS NOTED ±0.4

SCALE 2-1

NAME 3 WAY FASTEN-ON RECEPTACLE HOUSING

DR	A MERLINO	12-10-62	DE	
CHK	B '62		APP	R. Baker 12-10-62

PRINT DIST

REV M1