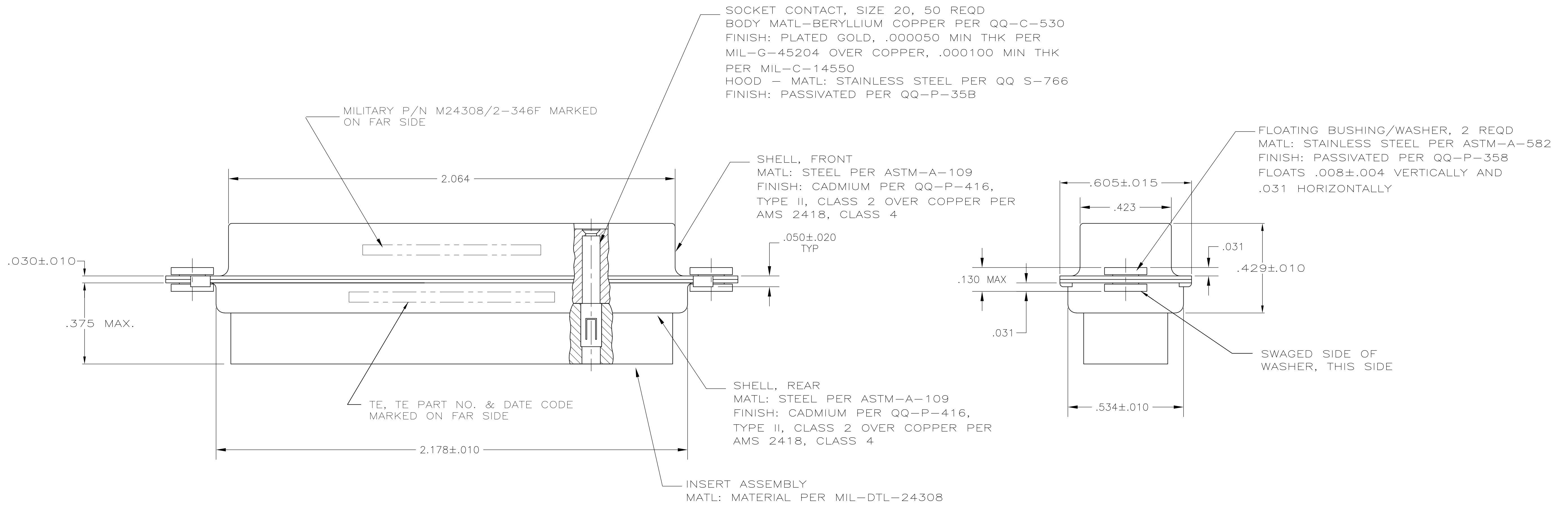
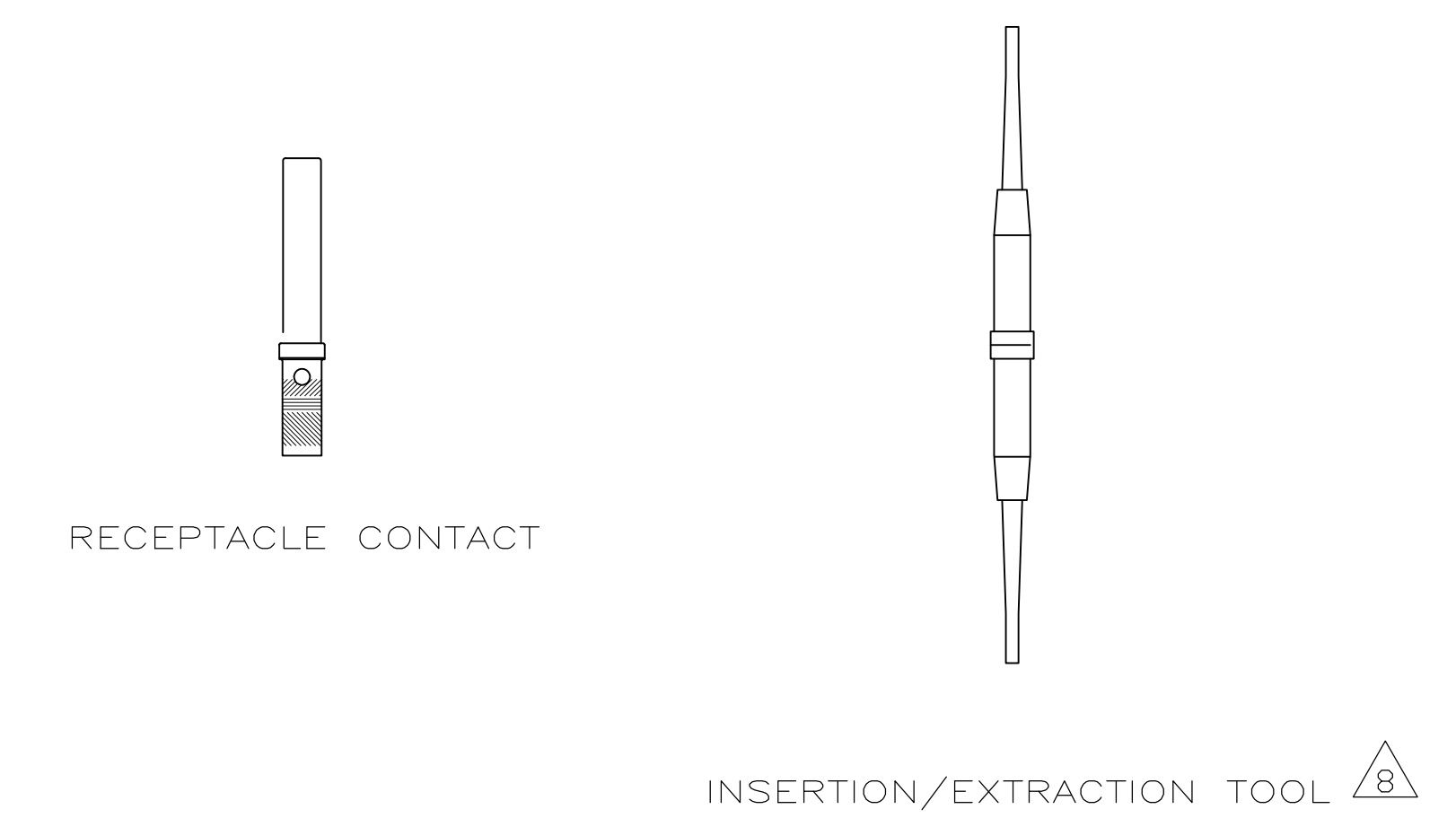
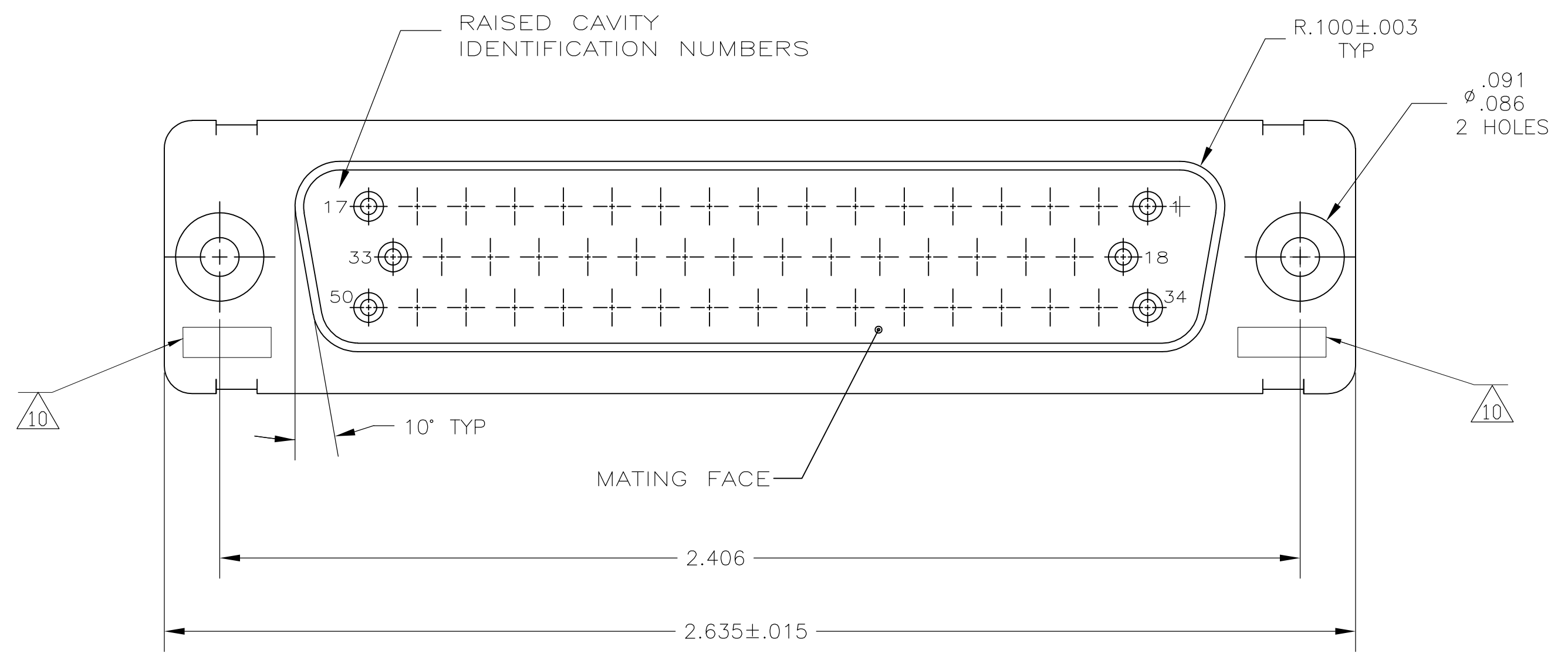


LOC		DIST		REVISIONS			
P	LTR	DESCRIPTION	DATE	DMN	APVD		
F		REVISED PER ECO-15-017709	30DEC15	KG	CD		



- THIS RECEPTACLE WILL MATE WITH ANY 50 POSN, SIZE 5 PLUG IN AMPLIMITE SERIES
- MAXIMUM WIRE INSULATION TO BE USED WITH THIS RECEPTACLE IS .068 DIA
- SST RETENTION CLIPS ARE INCLUDED IN INSERTS
- PACKAGE STAMPED M24308/2-486F & TE PART NUMBER 211529-1
- PACKAGE STAMPED M24308/2-346F & TE PART NUMBER 211529-2
- PACKAGE STAMPED M24308/2-357F & TE PART NUMBER 211529-3
- TE P/N 205090-1, MIL P/N 63-368, INCLUDED IN KIT
- TE P/N 91067-2, MIL P/N M81969/1-02
- CONNECTOR SUPPLIED WITHOUT CONTACTS, SHOWN FOR ILLUSTRATION ONLY
- UL/CSA DESIGNATION STAMPED IN THIS AREA.
- FOR CONNECTOR ASSEMBLIES, TE CONTACT PART NOS. 205090-1 MUST BE ORDERED SEPARATELY. CONNECTORS WITH CONTACTS ARE SUPPLIED WITH CONTACT 205090-1

DESCRIPTION	PART NO.
SAME AS -1 EXCEPT 6 7 8 11	211529-3
SAME AS -1 EXCEPT 5 7 11	211529-2
AS SHOWN 4 9 11	211529-1

THIS DRAWING IS A CONTROLLED DOCUMENT.

DIMENSIONS: INCHES	TOLERANCES UNLESS OTHERWISE SPECIFIED:	DIN MANJUNATH G M 27-May-15	APVD CHARLES THOMAS 27-May-15	NAME RECEPTACLE ASSEMBLY,AMPLIMITE,50 POSITION, SIZE 5,SERIES 109,W/DUAL FLOATING BUSHINGS	RESTRICTED TO
0 PLC ± -	1 PLC ± -	2 PLC ± -	3 PLC ± .005	4 PLC ± -	ANGLES ± -
MATERIAL	FINISH	WEIGHT	SIZE A1	CAGE CODE 00779	DRAWING NO. 211529
CUSTOMER DRAWING		SCALE 4:1	SHEET 1 OF 1	REV F	

STE TE Connectivity