

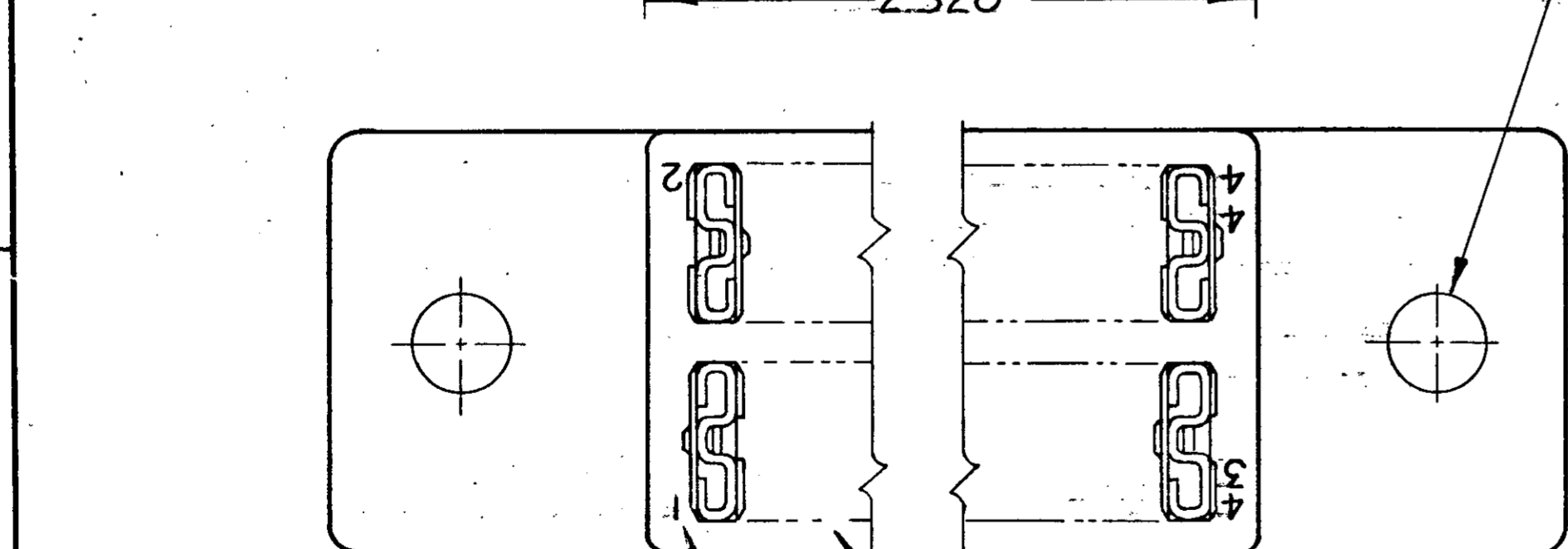
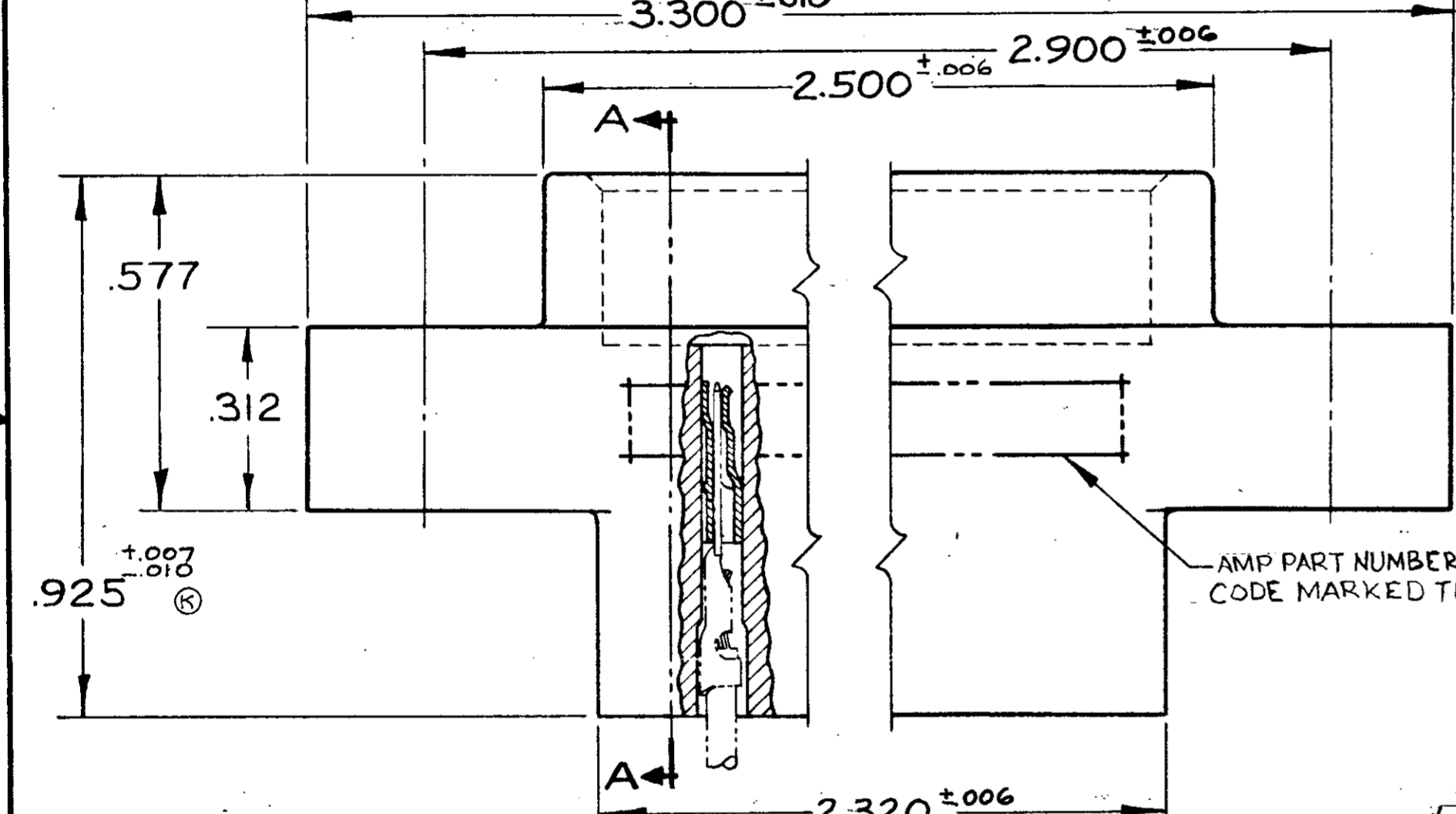
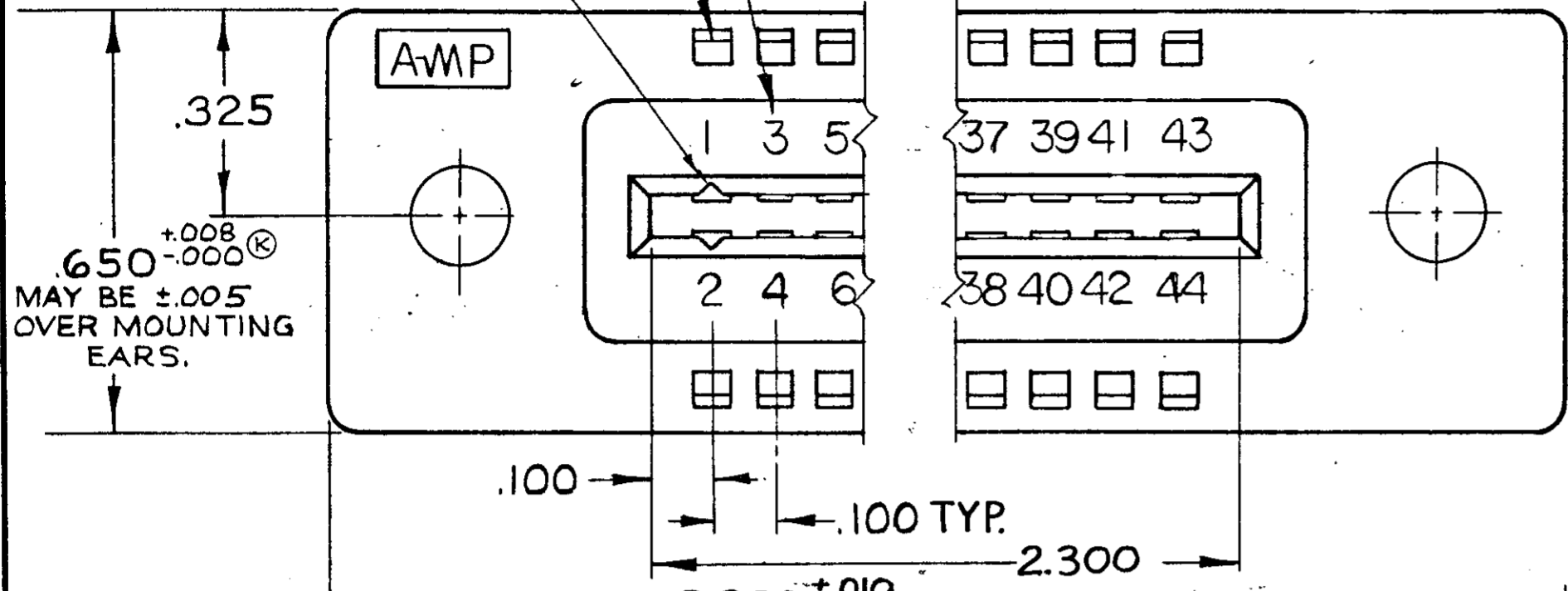
© 1967 BY AMP INCORPORATED. ALL RIGHTS RESERVED. AMP PRODUCTS COVERED BY PATENTS AND/OR PATENTS PENDING. APPROVED PER GOVT CONTRACT NO.

LOCATION FOR AMP-TAB FEMALE CONTACT

CAVITY IDENTIFICATION ON TOP SURFACE OF HOUSING. P/N (1)-582589-1 ONLY.

(1)-582589-1.1. SAME AS -1 EXCEPT TO HAVE CAVITY IDENTIFICATION ON TOP SURFACE OF HOUSING.

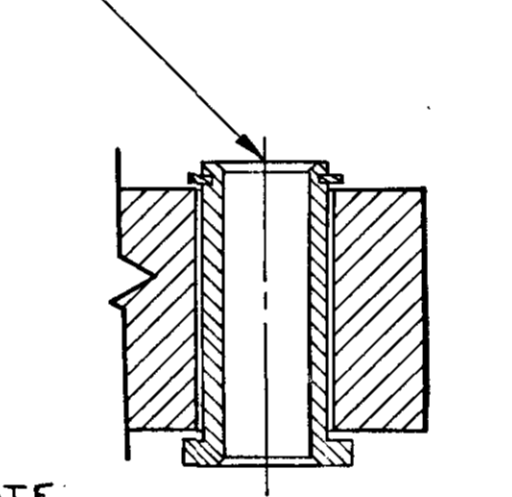
ZONE			LTR		DESCRIPTION		DATE		APPROVED
/			Y		ECO-08-020973		PY 11-08		JW



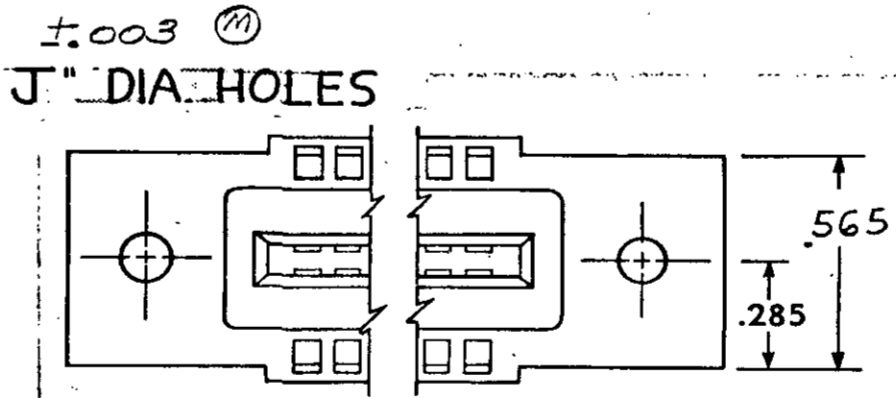
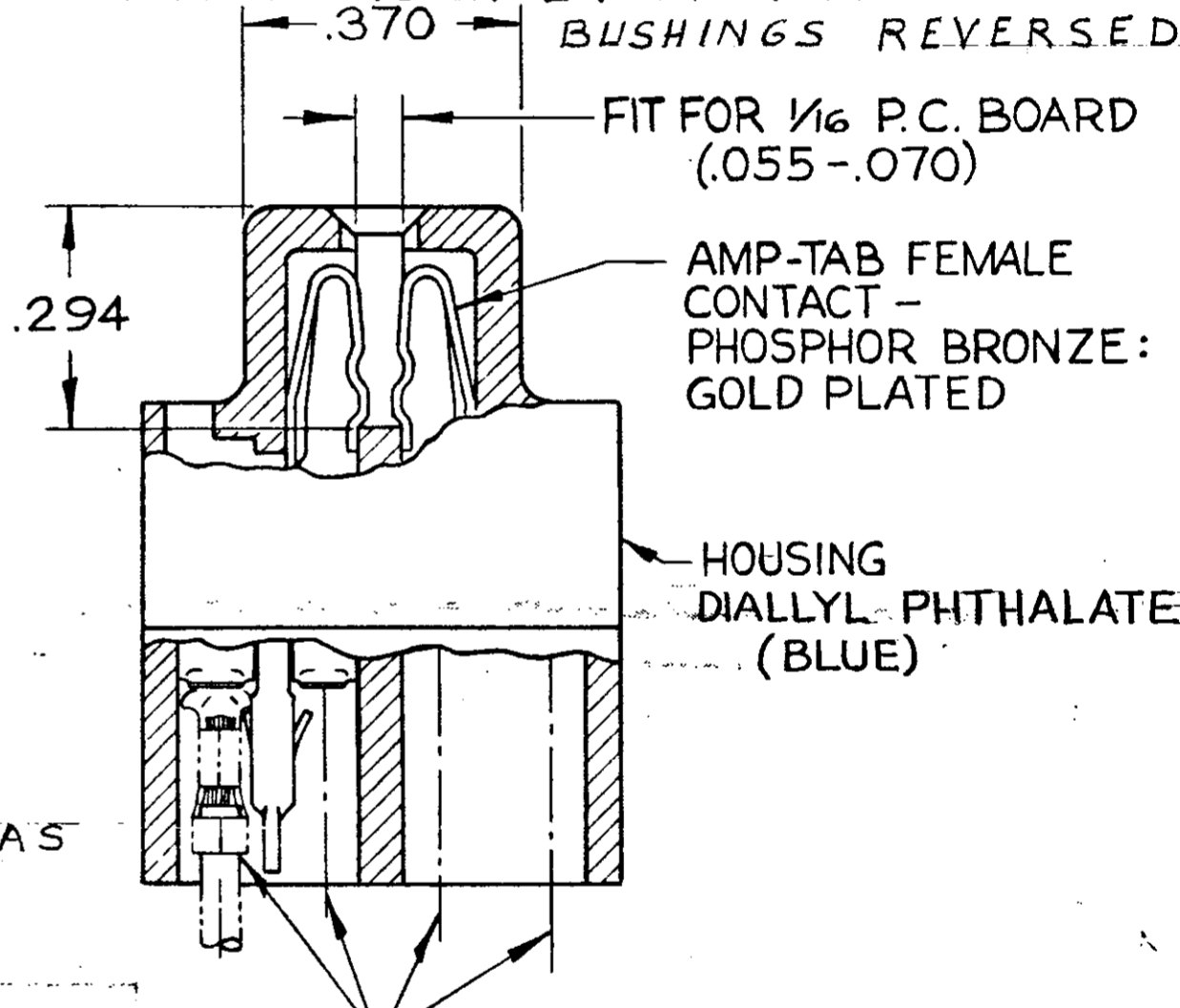
3. LASER MARKING ACCEPTABLE FOR ALL MARKING
 △ GROOVES FOR "ON CONTACT KEYING" AMP'S OPTION DEPENDING ON METHOD OF MANUFACTURE. FOR "ON CONTACT" KEYING USE KEYING PLUG P/N 583487-1. (MUST BE ORDERED SEPARATELY.)
 △ MOUNTING EAR CONFIGURATION AMP'S OPTION DEPENDS ON METHOD OF MANUFACTURE.

- ~~582589-1~~ 1. AS SHOWN "J" DIA. HOLES = .128
- ~~obs 582589-2~~ 1. SAME AS -1 EXCEPT 2 "J" DIA. HOLES = .156
- ~~obs 582589-6~~ SAME AS 4 EXCEPT INK STAMPING ON TOP AND BOTTOM
- ~~obs 582589-4~~ 1. SAME AS -1 EXCEPT: 2. FLOATING BUSHINGS.
- ~~obs 582589-5~~ 1. SAME AS -4 EXCEPT: FLOATING BUSHINGS REVERSED.

CLEARANCE FOR #4 SCREW.



-4
-5 BUSHING REVERSED AS SHOWN



ALTERNATE MOUNTING EAR CONFIGURATION △

CIRCUIT CAVITY IDENTIFICATION MARKING PER MIL-C-21097
 MARK FIRST 5 POSITIONS, NEXT 5 POSITIONS PLAIN

AMP INFO	
LOC	INT/DIST
DF	FO

UNLESS OTHERWISE SPECIFIED DIMENSIONS ARE IN INCHES TOLERANCES ON			CONTRACT NO.		AMP INCORPORATED HARRISBURG, PENNSYLVANIA	
FRACTIONS	DECIMALS	ANGLES	DR	DATE	NAME	
±	±.005	±	<i>g. ash</i>	12-16-66	22 POSITION AMP-TAB CONNECTOR .100 CENTERS QUAD	
MATERIAL	HEAT TREAT	FINISH	CHK	DATE	NUMBER	
SEE CALLOUT		SEE CALLOUT	<i>W. Burns</i>	1-5-67	582589	
			DSGN ENGR	DATE	REV	
			<i>J. Kaufman</i>	1-10-67	Y	
			APPD	DATE	SCALE 4-1	
			<i>R. Showman</i>	1/10/67	WT	
			DSGN APPD		CALC	
			OTHER APPD		ACTUAL	
					SHEET	

CUSTOMER DRAWING