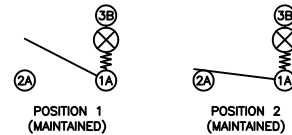


**SCHEMATIC**



**SPECIFICATIONS**

**FUNCTION:**  
1P1T OFF-ON

**RATINGS:**  
ANSI/UL 1054 and CAN/CSA C22.2 No. 55 (E194579):  
16A 125VAC [cURus]  
16A 250VAC [cURus]

CAN/CSA C22.2 No. 55 (233821):  
16A 125VAC [CSA]  
16A 250VAC [CSA]

DIN 61058-1/VDE 0630-1:2008-09 and EN 61058-1:2002+A2:2008 (40011301):  
16(4)A 250~ 1E4 T125/55 [VDE]

**ILLUMINATION VOLTAGE:**  
125V

**CONTACT RESISTANCE:**  
Initial: 20mΩ Max.

**INSULATION RESISTANCE:**  
100MΩ Min. at 500VDC

**DIELECTRIC STRENGTH:**  
1,000VAC For 1 Minute

**ELECTRICAL LIFE:**  
6,000 Cycles [cURus, CSA]  
10,000 Cycles [VDE]

**TEMPERATURE:**  
Operating: -20°C to 65°C [cURus, CSA]  
Operating: -20°C to 125°C [VDE]

**APPROVALS:**



**COLORS AND MARKINGS**

**BODY:**  
Black

**RUBBER BODY:**  
Black

**ACTUATOR:**  
Transparent Green

**MARKINGS:**  
None

**MARKING COLOR:**  
None

**MATERIALS**

**UPPER BODY:**  
Polyamide 6/6 (PA66), UL94 V-2

**LOWER BODY:**  
Polybutylene Terephthalate (PBT), UL94 V-2

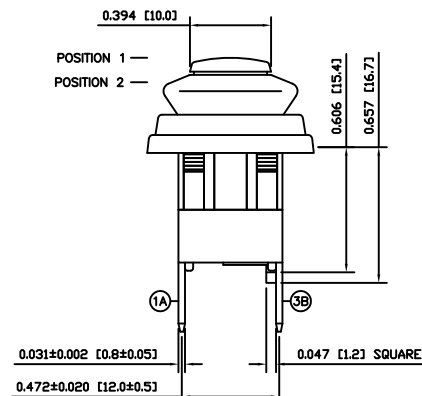
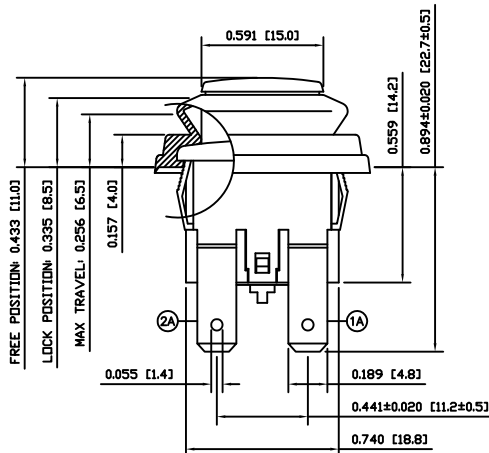
**RUBBER BODY:**  
Rubber

**ACTUATOR:**  
Polycarbonate (PC), UL94 V-2

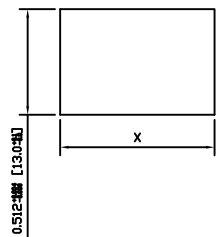
**LAMP:**  
Neon Bulb

**CONTACTS:**  
Silver Alloy

**TERMINALS:**  
Silver Plated Copper



**SUGGESTED PANEL CUTOUT**



PANEL THICKNESS	X
0.020~0.050 [0.50~1.20]	0.748 [19.0]
0.050~0.080 [1.20~2.00]	0.760 [19.3]
0.080~0.120 [2.00~3.00]	0.772 [19.6]

BODY	A	09/07/16	CAB
COLORS	A	09/07/20	CAB
MATERIALS	A	09/07/20	CAB
SPECIFICATIONS	A	09/07/20	CAB
REFERENCE	REV.	DATE	BY

THE INFORMATION CONTAINED IN THIS DOCUMENT IS PROPRIETARY TO E-SWITCH AND IS NOT TO BE COPIED OR TRANSFERRED

A	INITIAL RELEASE	19376	10/10/21	CAB
REV.	DESCRIPTION	PCR	DATE	DRAWN BY

DIMENSIONS	
INCHES [MILLIMETERS]	
GENERAL TOLERANCES	
±0.008 [±0.2] / ±1'	
SCALE	PROJECTION
DRAWING NOT TO SCALE	1st Angle

**PA4R11C1000-136**

DRAWING NUMBER 14-PA4R11C1000136	DATE OCTOBER 21, 2010	REVISION A
-------------------------------------	--------------------------	---------------