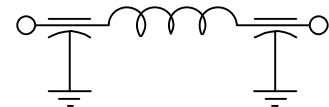


NOTE: HARDWARE IS INCLUDED.



CAPACITANCE	1500 pF GMV
TEMP. RANGE	-55°C TO 125°C
CURRENT	10 AMP MAX.
DCR	.01 $\Omega$ MAX.
WORKING VOLTAGE	85°C 350 VDC 125°C 200 VDC
MIN. IL PER MIL-STD-220, 25°C, NO LOAD	
FREQ. (MHz)	dB
10	5
100	40
1GHz	60
10GHz	60

SCHEMATIC



MARKING:

PART : 89001  
BAG : 1289-001  
DATE CODE  
QTY./BAG (200 MAX.)

	08	7	6	5	4	3	2	1	0	REV. NO.	TOLERANCES UNLESS OTHERWISE SPECIFIED
	CN 64826-ENG	CN 207435	CN 202979	CN 180696	CN 170043	CN 150202	CN 149285	CN 148903	CN 146113	CHANGE NOTICE	Fractions $\pm$ 1/64
											Dec. .xx $\pm$
											Dec. .xxx $\pm$ .010
											Angles $\pm$ 0° 30'
											CODE IDENT. NO. DLSP2

**api**   
technologies corp.

FAIRVIEW  
PENNSYLVANIA

Dwn. J. KAUFFMAN

Description

Ckd. 7-24-12

FILTER

Apvd.

Scale NONE

1289-001