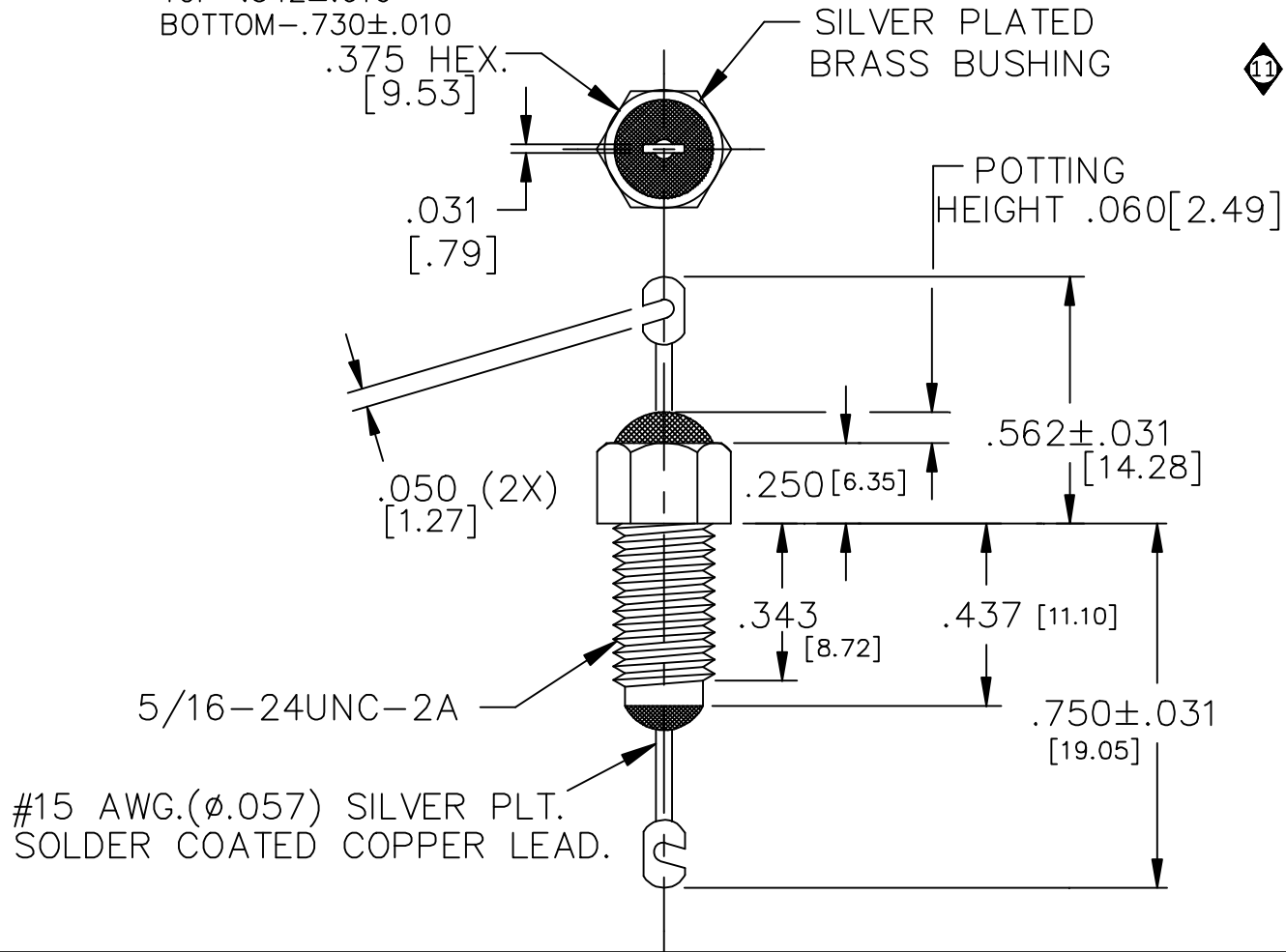


NOTES:

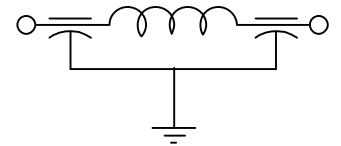
1. HARDWARE IS INCLUDED
2. MAXIMUM POTTING TORQUE=7LBS-IN
3. SUGGESTED MOUNTING HOLE ϕ .328[8.34]
4. PRE FLATTEN/NOTCH DIMENSIONS

TOP-.542 \pm .010
 BOTTOM-.730 \pm .010



LEAD FINISH: SOLDER	
BUSHING FINISH: SILVER	
CAPACITANCE	3000 pF GMV.
TEMP. RANGE	-55°C TO 125°C
CURRENT	25 AMP MAX.
WORKING VOLTAGE	85°C 1000VDC MAX. 125°C 500 VDC MAX.
D.C. RESISTANCE	.01ohms MAX.
MIN. I.L. PER MIL-STD-220 AT 25°C NO LOAD	
FREQ. MHz	I.L. (db)
1	---
10	10
100	55
1 GHz/10 GHz	70

SCHEMATIC

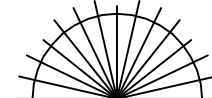


MARKING:

PART: S1202052 XXX DATE CODE
 USE ANTI-STATIC BAGS FOR ALL SHIPMENTS

BAG: 1202-052
 XXXX DATE CODE
 XXX QTY./BAG
 (50/ BAG MAX.)

REV. NO.	TOLERANCES UNLESS OTHERWISE SPECIFIED
1	Fractions \pm 1/64
10	Dec. .xx \pm
9	Dec. .xxx \pm .010
8	Angles \pm 0° 30'
7	CODE IDENT. NO.
6	DLSP2
5	CHANGE NOTICE
4	
3	
2	
1	



ERIE, FAIRVIEW
PENNSYLVANIA

SPECTRUM CONTROL INC.

Dwn. KRDZALIC	Description
Date 9/25/02	FLTR., SING., Pi, BSHG.
Engr. K. Wood	
Scale NONE	1202-052