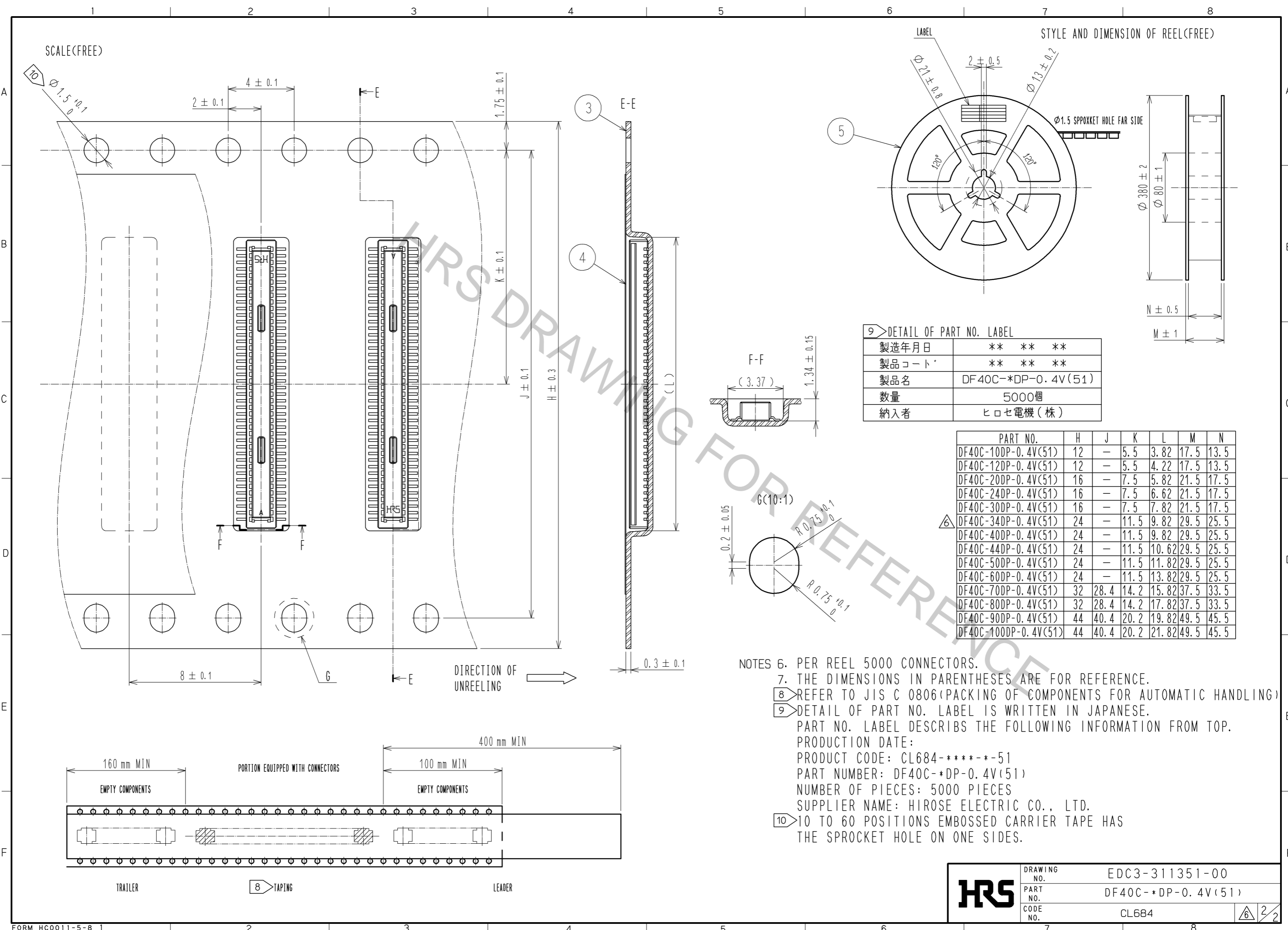


- NOTES) 1. ALL LEADS CO-PLANARITY SHALL BE 0.1MAX.
 2 EACH ONE CONTACT AT 4 CORNERS SHALL BE USED AS METAL HOLD DOWN.
 3 10 TO 50 POSITIONS HAVE LOCKING SYSTEM BY CONCAVE DESIGN ON CONTACTS.
 60 TO 100 POSITIONS HAVE NO CONCAVE DESIGN ON CONTACTS.
 4 HRS MARK AND CAV NO. IS INDICATED IN APPROXIMAL POSITION SHOWN.
 THE INDICATION COULD BE ON THE UPPER SURFACE OF DESIGN ON THE CONNECTOR.
 5 100 POSITIONS HAVE CONCAVE PORTION.

| PART NO. | CODE NO. | B | C | D |
|----------------------|-----------------|-------|------|-----|
| DF40C-10DP-0.4V(51) | CL684-4035-0-51 | 3.52 | 1.6 | 1.0 |
| DF40C-12DP-0.4V(51) | CL684-4149-9-51 | 3.92 | 2.0 | 1.0 |
| DF40C-20DP-0.4V(51) | CL684-4010-9-51 | 5.52 | 3.6 | 1.0 |
| DF40C-24DP-0.4V(51) | CL684-4011-1-51 | 6.32 | 4.4 | 1.2 |
| DF40C-30DP-0.4V(51) | CL684-4012-4-51 | 7.52 | 5.6 | 1.5 |
| DF40C-34DP-0.4V(51) | CL684-4024-3-51 | 8.32 | 6.4 | 2.3 |
| DF40C-40DP-0.4V(51) | CL684-4013-7-51 | 9.52 | 7.6 | 3.2 |
| DF40C-44DP-0.4V(51) | CL684-4077-0-51 | 10.32 | 8.4 | 3.2 |
| DF40C-50DP-0.4V(51) | CL684-4014-0-51 | 11.52 | 9.6 | 3.2 |
| DF40C-60DP-0.4V(51) | CL684-4003-3-51 | 13.52 | 11.6 | 3.2 |
| DF40C-70DP-0.4V(51) | CL684-4015-2-51 | 15.52 | 13.6 | 3.2 |
| DF40C-80DP-0.4V(51) | CL684-4001-8-51 | 17.52 | 15.6 | 3.2 |
| DF40C-90DP-0.4V(51) | CL684-4125-0-51 | 19.52 | 17.6 | 3.2 |
| DF40C-100DP-0.4V(51) | CL684-4032-1-51 | 21.52 | 19.6 | 3.2 |

| 2 | PHOSPHOR BRONZE | CONTACT AREA: GOLD 0.05 μm MIN | 5 | PS | BLACK | | | | |
|-------------------------|-----------------|--------------------------------|------|-------------|------------------------------|------------------------------|------------|-------------|----------|
| | | SMT LEAD: GOLD 0.05 μm MIN | | | POLYESTER | CLEAR COVER TAPE | | | |
| | | UNDERPLATING: NICKEL 1 μm MIN | | | PS | CLEAR, EMBOSSED CARRIER TAPE | | | |
| 1 | LCP | BLACK, UL94V-0 | 3 | PS | CLEAR, EMBOSSED CARRIER TAPE | | | | |
| NO. | MATERIAL | FINISH . REMARKS | NO. | MATERIAL | FINISH . REMARKS | | | | |
| UNITS | mm | SCALE | 10:1 | COUNT | 2 | DESCRIPTION OF REVISIONS | DESIGNED | CHECKED | DATE |
| | | | | | | DIS-H-006039 | YH.MICHIDA | TS.MIYAZAKI | 11.07.26 |
| APPROVED : MO. NAKAMURA | | 05.12.09 | | DRAWING NO. | | EDC3-311351-00 | | | |
| CHECKED : KH. IKEDA | | 05.12.09 | | PART NO. | | DF40C-*DP-0.4V(51) | | | |
| DESIGNED : MY. GOTO | | 05.12.09 | | CODE NO. | | CL684 | | | |
| DRAWN : MY. GOTO | | 05.12.09 | | NO. | | 1/2 | | | |

Apr.1.2017 Copyright 2017 HIROSE ELECTRIC CO., LTD. All Rights Reserved.



9 > DETAIL OF PART NO. LABEL

| | |
|-------|--------------------|
| 製造年月日 | ** ** * |
| 製品コード | ** ** * |
| 製品名 | DF40C-*DP-0.4V(51) |
| 数量 | 5000個 |
| 納入者 | ヒロセ電機(株) |

| PART NO. | H | J | K | L | M | N |
|----------------------|----|------|------|-------|------|------|
| DF40C-10DP-0.4V(51) | 12 | — | 5.5 | 3.82 | 17.5 | 13.5 |
| DF40C-12DP-0.4V(51) | 12 | — | 5.5 | 4.22 | 17.5 | 13.5 |
| DF40C-20DP-0.4V(51) | 16 | — | 7.5 | 5.82 | 21.5 | 17.5 |
| DF40C-24DP-0.4V(51) | 16 | — | 7.5 | 6.62 | 21.5 | 17.5 |
| DF40C-30DP-0.4V(51) | 16 | — | 7.5 | 7.82 | 21.5 | 17.5 |
| DF40C-34DP-0.4V(51) | 24 | — | 11.5 | 9.82 | 29.5 | 25.5 |
| DF40C-40DP-0.4V(51) | 24 | — | 11.5 | 9.82 | 29.5 | 25.5 |
| DF40C-44DP-0.4V(51) | 24 | — | 11.5 | 10.62 | 29.5 | 25.5 |
| DF40C-50DP-0.4V(51) | 24 | — | 11.5 | 11.82 | 29.5 | 25.5 |
| DF40C-60DP-0.4V(51) | 24 | — | 11.5 | 13.82 | 29.5 | 25.5 |
| DF40C-70DP-0.4V(51) | 32 | 28.4 | 14.2 | 15.82 | 37.5 | 33.5 |
| DF40C-80DP-0.4V(51) | 32 | 28.4 | 14.2 | 17.82 | 37.5 | 33.5 |
| DF40C-90DP-0.4V(51) | 44 | 40.4 | 20.2 | 19.82 | 49.5 | 45.5 |
| DF40C-100DP-0.4V(51) | 44 | 40.4 | 20.2 | 21.82 | 49.5 | 45.5 |

NOTES 6. PER REEL 5000 CONNECTORS.
 7. THE DIMENSIONS IN PARENTHESES ARE FOR REFERENCE.
 8 REFER TO JIS C 0806(PACKING OF COMPONENTS FOR AUTOMATIC HANDLING)
 9 DETAIL OF PART NO. LABEL IS WRITTEN IN JAPANESE.
 PART NO. LABEL DESCRIBES THE FOLLOWING INFORMATION FROM TOP.
 PRODUCTION DATE:
 PRODUCT CODE: CL684-*****-51
 PART NUMBER: DF40C-*DP-0.4V(51)
 NUMBER OF PIECES: 5000 PIECES
 SUPPLIER NAME: HIROSE ELECTRIC CO., LTD.
 10 TO 60 POSITIONS EMBOSSED CARRIER TAPE HAS THE SPROCKET HOLE ON ONE SIDES.

| | | |
|------------|-------------|--------------------|
| HRS | DRAWING NO. | EDC3-311351-00 |
| | PART NO. | DF40C-*DP-0.4V(51) |
| | CODE NO. | CL684 |