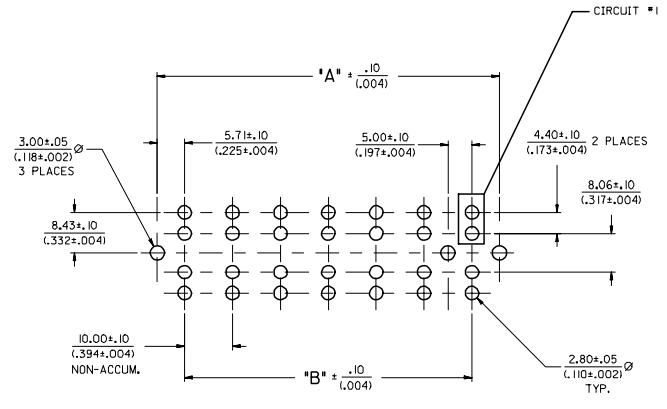
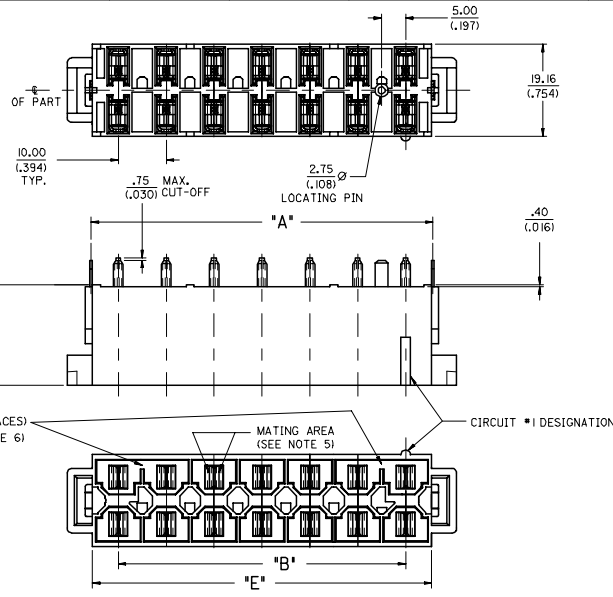


| MATERIAL NUMBER | CIRCUITS | DIM. "A"      | DIM. "B"      | DIM. "C"    | DIM. "D"    | DIM. "E"      | PCB THICKNESS | QUANTITY OF POLARIZING SLOTS | TERMINAL PLATING |
|-----------------|----------|---------------|---------------|-------------|-------------|---------------|---------------|------------------------------|------------------|
| 43915-1101      | 6        | 31.41/(1.237) | 20.00/(.787)  | 3.50/(.137) | L80/(.071)  | 30.90/(1.217) |               | 1                            |                  |
| 43915-1102      | 8        | 41.41/(1.630) | 30.00/(1.181) | 3.50/(.137) | L80/(.071)  | 40.90/(1.610) |               | 2                            |                  |
| 43915-1103      | 10       | 51.41/(2.024) | 40.00/(1.575) | 3.50/(.137) | L80/(.071)  | 50.90/(2.004) | 1.57/(.062)   | 2                            |                  |
| 43915-1104      | 12       | 61.41/(2.418) | 50.00/(1.969) | 3.50/(.137) | L80/(.071)  | 60.90/(2.398) |               | 2                            |                  |
| 43915-1105      | 14       | 71.41/(2.811) | 60.00/(2.362) | 3.50/(.137) | L80/(.071)  | 70.90/(2.791) |               | 2                            |                  |
| 43915-1106      | 6        | 31.41/(1.237) | 20.00/(.787)  | 5.10/(.201) | 2.60/(.102) | 30.90/(1.217) |               | 1                            |                  |
| 43915-1107      | 8        | 41.41/(1.630) | 30.00/(1.181) | 5.10/(.201) | 2.60/(.102) | 40.90/(1.610) |               | 2                            |                  |
| 43915-1108      | 10       | 51.41/(2.024) | 40.00/(1.575) | 5.10/(.201) | 2.60/(.102) | 50.90/(2.004) | 2.36/(.093)   | 2                            |                  |
| 43915-1109      | 12       | 61.41/(2.418) | 50.00/(1.969) | 5.10/(.201) | 2.60/(.102) | 60.90/(2.398) |               | 2                            |                  |
| 43915-1110      | 14       | 71.41/(2.811) | 60.00/(2.362) | 5.10/(.201) | 2.60/(.102) | 70.90/(2.791) |               | 2                            |                  |
| 43915-1111      | 6        | 31.41/(1.237) | 20.00/(.787)  | 5.10/(.201) | 3.40/(.134) | 30.90/(1.217) |               | 1                            | OVERALL TIN      |
| 43915-1112      | 8        | 41.41/(1.630) | 30.00/(1.181) | 5.10/(.201) | 3.40/(.134) | 40.90/(1.610) |               | 2                            |                  |
| 43915-1114      | 10       | 51.41/(2.024) | 40.00/(1.575) | 5.10/(.201) | 3.40/(.134) | 50.90/(2.004) | 3.18/(.125)   | 2                            |                  |
| 43915-1114      | 12       | 61.41/(2.418) | 50.00/(1.969) | 5.10/(.201) | 3.40/(.134) | 60.90/(2.398) |               | 2                            |                  |
| 43915-1115      | 14       | 71.41/(2.811) | 60.00/(2.362) | 5.10/(.201) | 3.40/(.134) | 70.90/(2.791) |               | 2                            |                  |
| 43915-1116      | 6        | 31.41/(1.237) | 20.00/(.787)  | 8.30/(.327) | 6.58/(.259) | 30.90/(1.217) |               | 1                            |                  |
| 43915-1117      | 8        | 41.41/(1.630) | 30.00/(1.181) | 8.30/(.327) | 6.58/(.259) | 40.90/(1.610) |               | 2                            |                  |
| 43915-1118      | 10       | 51.41/(2.024) | 40.00/(1.575) | 8.30/(.327) | 6.58/(.259) | 50.90/(2.004) | 6.35/(.250)   | 2                            |                  |
| 43915-1119      | 12       | 61.41/(2.418) | 50.00/(1.969) | 8.30/(.327) | 6.58/(.259) | 60.90/(2.398) |               | 2                            |                  |
| 43915-1120      | 14       | 71.41/(2.811) | 60.00/(2.362) | 8.30/(.327) | 6.58/(.259) | 70.90/(2.791) |               | 2                            |                  |
| 43915-1121      | 10       | 51.41/(2.024) | 40.00/(1.575) | 3.50/(.137) | 2.60/(.102) | 50.90/(2.004) | 2.36/(.093)   | 2                            |                  |
| 43915-1905      | 14       | 71.41/(2.811) | 60.00/(2.362) | 3.50/(.137) | L80/(.071)  | 70.90/(2.791) | 1.57/(.062)   | 2                            |                  |
| 43915-1201      | 6        | 31.41/(1.237) | 20.00/(.787)  | 3.50/(.137) | L80/(.071)  | 30.90/(1.217) |               | 1                            |                  |
| 43915-1202      | 8        | 41.41/(1.630) | 30.00/(1.181) | 3.50/(.137) | L80/(.071)  | 40.90/(1.610) |               | 2                            |                  |
| 43915-1203      | 10       | 51.41/(2.024) | 40.00/(1.575) | 3.50/(.137) | L80/(.071)  | 50.90/(2.004) | 1.57/(.062)   | 2                            |                  |
| 43915-1204      | 12       | 61.41/(2.418) | 50.00/(1.969) | 3.50/(.137) | L80/(.071)  | 60.90/(2.398) |               | 2                            |                  |
| 43915-1205      | 14       | 71.41/(2.811) | 60.00/(2.362) | 3.50/(.137) | L80/(.071)  | 70.90/(2.791) |               | 2                            |                  |
| 43915-1206      | 6        | 31.41/(1.237) | 20.00/(.787)  | 5.10/(.201) | 2.60/(.102) | 30.90/(1.217) |               | 1                            |                  |
| 43915-1207      | 8        | 41.41/(1.630) | 30.00/(1.181) | 5.10/(.201) | 2.60/(.102) | 40.90/(1.610) |               | 2                            |                  |
| 43915-1208      | 10       | 51.41/(2.024) | 40.00/(1.575) | 5.10/(.201) | 2.60/(.102) | 50.90/(2.004) | 2.36/(.093)   | 2                            |                  |
| 43915-1209      | 12       | 61.41/(2.418) | 50.00/(1.969) | 5.10/(.201) | 2.60/(.102) | 60.90/(2.398) |               | 2                            |                  |
| 43915-1210      | 14       | 71.41/(2.811) | 60.00/(2.362) | 5.10/(.201) | 2.60/(.102) | 70.90/(2.791) |               | 2                            |                  |
| 43915-1211      | 6        | 31.41/(1.237) | 20.00/(.787)  | 5.10/(.201) | 3.40/(.134) | 30.90/(1.217) |               | 1                            | SELECT GOLD      |
| 43915-1212      | 8        | 41.41/(1.630) | 30.00/(1.181) | 5.10/(.201) | 3.40/(.134) | 40.90/(1.610) |               | 2                            |                  |
| 43915-1213      | 10       | 51.41/(2.024) | 40.00/(1.575) | 5.10/(.201) | 3.40/(.134) | 50.90/(2.004) | 3.18/(.125)   | 2                            |                  |
| 43915-1214      | 12       | 61.41/(2.418) | 50.00/(1.969) | 5.10/(.201) | 3.40/(.134) | 60.90/(2.398) |               | 2                            |                  |
| 43915-1215      | 14       | 71.41/(2.811) | 60.00/(2.362) | 5.10/(.201) | 3.40/(.134) | 70.90/(2.791) |               | 2                            |                  |
| 43915-1216      | 6        | 31.41/(1.237) | 20.00/(.787)  | 8.30/(.327) | 6.58/(.259) | 30.90/(1.217) |               | 1                            |                  |
| 43915-1217      | 8        | 41.41/(1.630) | 30.00/(1.181) | 8.30/(.327) | 6.58/(.259) | 40.90/(1.610) |               | 2                            |                  |
| 43915-1218      | 10       | 51.41/(2.024) | 40.00/(1.575) | 8.30/(.327) | 6.58/(.259) | 50.90/(2.004) | 6.35/(.250)   | 2                            |                  |
| 43915-1219      | 12       | 61.41/(2.418) | 50.00/(1.969) | 8.30/(.327) | 6.58/(.259) | 60.90/(2.398) |               | 2                            |                  |
| 43915-1220      | 14       | 71.41/(2.811) | 60.00/(2.362) | 8.30/(.327) | 6.58/(.259) | 70.90/(2.791) |               | 2                            |                  |
| 43915-1221      | 10       | 51.41/(2.024) | 40.00/(1.575) | 3.50/(.137) | 2.60/(.102) | 50.90/(2.004) | 2.36/(.093)   | 2                            |                  |

**NOTES:**

- MATERIALS:  
HOUSING: 30% GLASS FILLED NYLON 4/6, U.L. 94V-0, COLOR: BLACK.  
TERMINAL: ALLOY 151  
PLATING: \*TIN OVER NICKEL.  
OR SELECT GOLD AND TIN OVER NICKEL.  
(SEE CHART)  
\* THE PRIMARY SHIPPING CARTON WILL BE LABELED  
COMPLIANT TO ROHS DIRECTIVE 2002/95/EC  
AND EU ANNEX II OF DIRECTIVE 2002/95/EC.  
CARTONS WITHOUT THIS LABEL MAY CONTAIN  
PRODUCT WITH TIN-LEAD.
- PRODUCT SPEC.: PSX-42815-0001
- PARTS ARE NOT TO BE MATED OR UNMATED WHILE CIRCUITS ARE LIVE.
- PART MATES WITH MOLEX RECEPTACLE 43914.
- WHEN USING OVERALL TIN PLATED TERMINALS:  
FOR APPLICATIONS INVOLVING VIBRATION AND/OR THERMAL CYCLING, MOLEX STRONGLY  
RECOMMENDS THE USE OF NYE LUBRICANT (NYGEL 7600) ON THE MATING  
SURFACES OF THE TERMINAL.
- POLARIZING SLOTS TO BE LOCATED BETWEEN CIRCUITS ON EITHER END  
OF HOUSING OF THE CIRCUIT 1 ROW, AS SHOWN.  
EXCEPTION: THE 6 CIRCUIT HOUSING WILL HAVE A SINGLE SLOT ON THE CIRCUIT 1 END ONLY.



**RECOMMENDED P.C. BOARD PLATED-THRU HOLE LAYOUT**  
(14 CIRCUIT LAYOUT SHOWN)

|   |                               |   |                              |                     |  |                        |
|---|-------------------------------|---|------------------------------|---------------------|--|------------------------|
| ADDED -1905<br>EC NO: UCP2006-1689<br>DRAWN: JOMERL 2006/0124<br>CHECKED: JOMERL 2006/0124<br>APPR: JOMERL 2006/0124<br>REV 1 | QUALITY SYMBOLS<br>▽=0<br>▽=0 | GENERAL TOLERANCES (UNLESS SPECIFIED)<br>mm<br>INCH | DIMENSION STYLE<br>MM/IN     | SCALE<br>2:1        | DESIGN UNITS<br>METRIC   | THIRD ANGLE PROJECTION |
|   | DRAWN BY<br>JOMERL            | DATE<br>8/21/97                                     | CHECKED BY<br>JOMERL         | DATE<br>8/25/97     | APPROVED BY<br>FRY   | DATE<br>8/26/97        |
| DRAFT WHERE APPLICABLE<br>MUST REMAIN<br>WITHIN DIMENSIONS  | SEE CHART                     | MATERIAL NO.<br>SD-43915-002                        | DOCUMENT NO.<br>SD-43915-002 | SHEET NO.<br>1 OF 1 | MOLEX INCORPORATED<br>THIS DRAWING CONTAINS INFORMATION THAT IS PROPRIETARY TO MOLEX<br>INCORPORATED AND SHOULD NOT BE USED WITHOUT WRITTEN PERMISSION |                        |