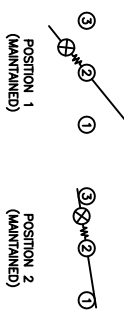


SCHEMATIC



SPECIFICATIONS

FUNCTION:
1P1T OFF-ON

RATINGS:
20A 125VAC [cULRu]
16A 250VAC [cULRu]
3/4HP 125/250VAC [cULRu]

EN 61058-1:2002 and DIN/VDE 0630:2003-03 (40017440):
16(4)A 250V~ 1E4 μ 1T5/55 [ENEC10, VDE]
10(2)A 250V~ 5E4 μ 1T5/55 [ENEC10, VDE]
20(6)A 250V~ 1E4 μ 1T25/55 [ENEC10, VDE]

ILLUMINATION VOLTAGE:
120V

CONTACT RESISTANCE:
Initial: 20mΩ Max.

INSULATION RESISTANCE:
100MΩ Min. at 500VDC

DIELECTRIC STRENGTH:
1,000VAC for 1 Minute

ELECTRICAL LIFE:
6,000 Cycles [cULRu, CSA]
10,000 Cycles [ENEC10, VDE: 16(4)A 250V~]
50,000 Cycles [ENEC10, VDE: 10(2)A 250V~]

TEMPERATURE:
Operating: -20°C to 105°C [cULRu, CSA]
Operating: -20°C to 85°C [ENEC10, VDE: 16(4)A 250V~]
Operating: -20°C to 125°C [ENEC10, VDE: 20(6)A 250V~]

APPROVALS:



COLORS AND MARKINGS

BODY:
Black

ACTUATOR:
Transparent Red

MARKINGS:
None

MARKING COLOR:
None

MATERIALS

BODY:
Polyamide 6/6 (PA66), UL94 V-2

ACTUATOR:
Polycarbonate (PC), UL94 V-2

LAMP CARRIER:
Polyamide 6/6 (PA66), UL94 V-2

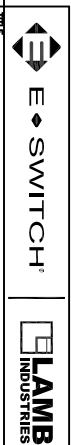
LAMP:
Neon Bulb

LAMP SPRING:
Steel

SPRING:
Steel

CONTACTS:
Silver Plated Copper

TERMINALS:
Silver Plated Copper
Silver Plated Brass



RSC141D1000-116

DATE: FEBRUARY 1, 2010

THE INFORMATION CONTAINED IN THIS DOCUMENT IS PROPRIETARY TO E-SWITCH AND IS NOT TO BE COPIED OR TRANSMITTED

ACTUATOR	A	09/08/13	CAB
BODY	B	10/09/10 <th>CAB</th>	CAB
COLORS	A	09/08/13 <th>CAB</th>	CAB
MATERIALS	A	09/08/13 <th>CAB</th>	CAB
SPECIFICATIONS	B	10/01/27 <th>CAB</th>	CAB
REFERENCE	REV.	DATE	BY

CONNECT BODY LENGTH AND WIDTH, CONNECT CUTOUT	21978	09/11/14	ESP
REDUCED CSA RATING	20087 <td>06/11/12 <th>49</th> </td>	06/11/12 <th>49</th>	49
IMPROVED UL TEMPERATURE RATING TO 105°C	18788 <td>10/02/01 <th>CAB</th> </td>	10/02/01 <th>CAB</th>	CAB
INITIAL RELEASE	PO80001 <td>09/08/13 <th>CAB</th> </td>	09/08/13 <th>CAB</th>	CAB
DESCRIPTION	REV.	DATE	DRAWN BY

DIMENSIONS	INCHES [MILLIMETERS]
GENERAL TOLERANCES	±0.008 [±0.2] / ±1'
SCALE	PROJECTION
DRAWING NOT TO SCALE	

ITEM	NUMBER	DATE	REVISION
	14-RSC141D1000116	FEBRUARY 1, 2010	D