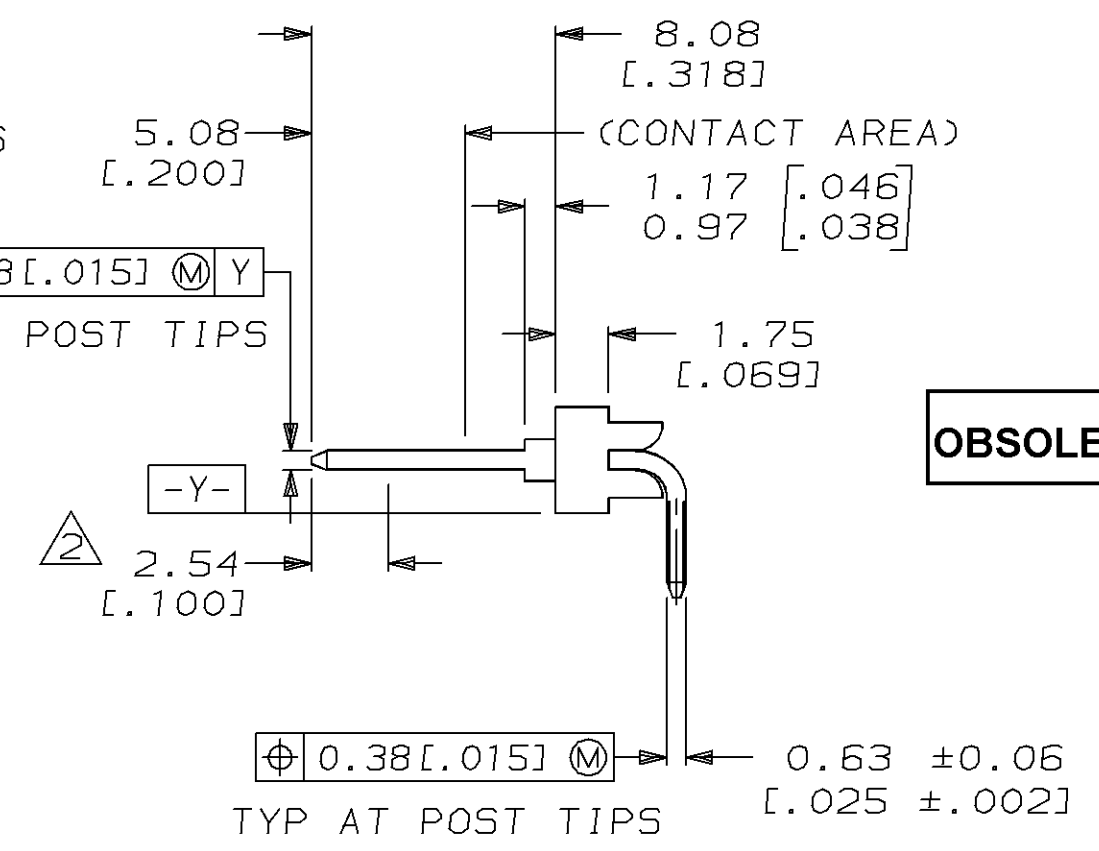
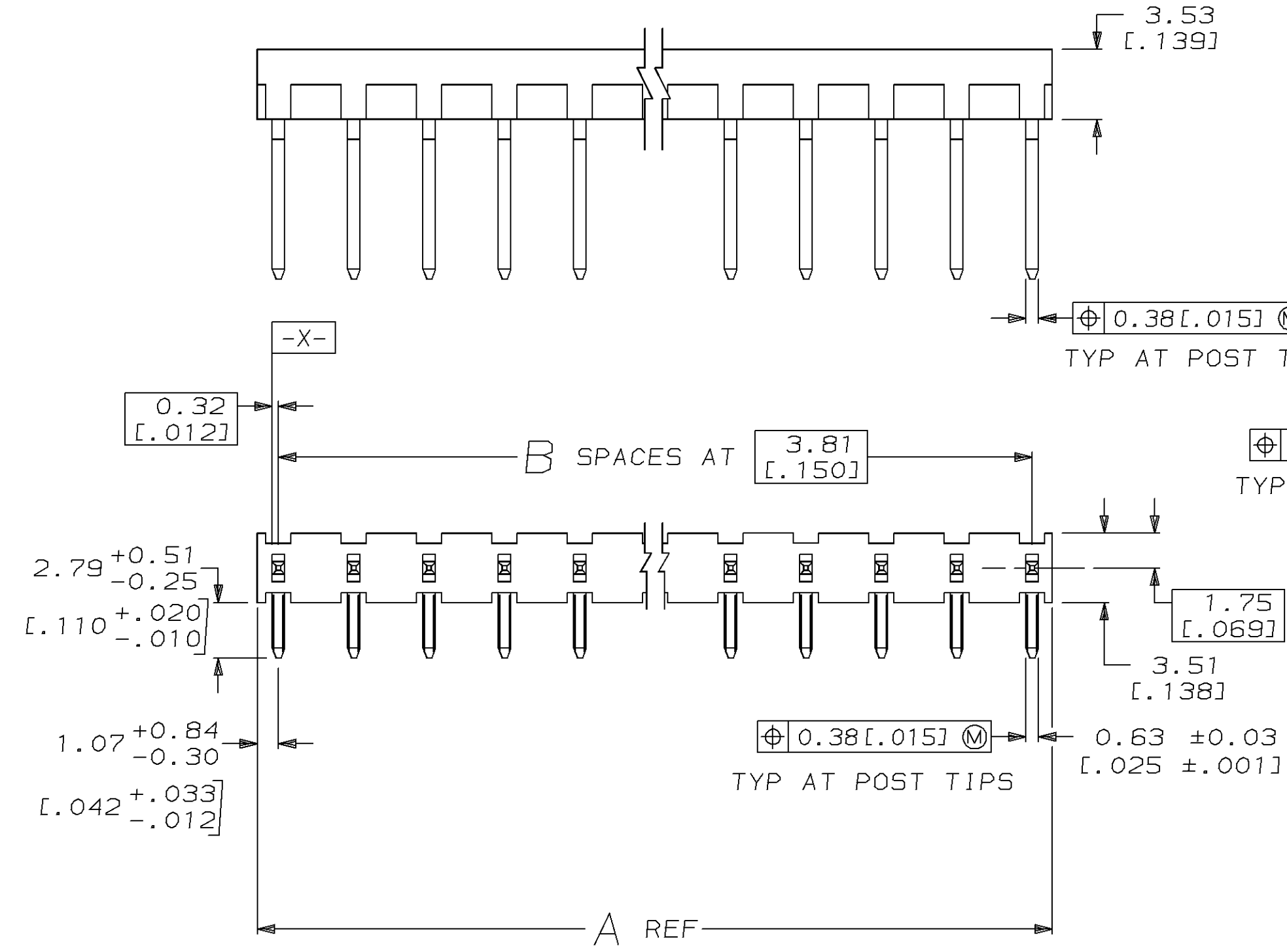


THIS DRAWING IS UNPUBLISHED. RELEASED FOR PUBLICATION ,19 .
 © COPYRIGHT 19 BY AMP INCORPORATED. ALL INTERNATIONAL RIGHTS RESERVED.

MOD	LOC	DIST	P	F	ZONE	LTR	DESCRIPTION	DATE	DWN	APPD
25	AD	39				K2	REVISED PER ECO-16-004710	13JUN2016	NK	MM



OBSOLETE

NO OF POSN	PART NO	NO OF POSN	PART NO
26	101.19 [3.984]	27	2-87236-6
25	97.38 [3.834]	26	4-2-87236-5
24	93.57 [3.684]	25	4-2-87236-4
23	89.76 [3.534]	24	4-2-87236-3
22	85.95 [3.384]	23	4-2-87236-2
21	82.14 [3.234]	22	4-2-87236-1
20	78.33 [3.084]	21	4-2-87236-0
19	74.52 [2.934]	20	4-87236-9
18	70.71 [2.784]	19	4-87236-8
17	66.90 [2.634]	18	4-87236-7
16	63.09 [2.484]	17	4-87236-6
15	59.28 [2.334]	16	4-87236-5
14	55.47 [2.184]	15	4-87236-4
13	51.66 [2.034]	14	4-87236-3
12	47.85 [1.884]	13	4-87236-2
11	44.04 [1.734]	12	4-87236-1
10	40.23 [1.584]	11	4-87236-0
9	36.42 [1.434]	10	4-87236-9
8	32.61 [1.284]	9	4-87236-8
7	28.80 [1.134]	8	4-87236-7
6	24.99 [.984]	7	4-87236-6
5	21.18 [.834]	6	4-87236-5
4	17.37 [.684]	5	87236-4
3	13.56 [.534]	4	87236-3
2	9.75 [.384]	3	4-87236-2
1	5.94 [.234]	2	4-87236-1

- 1. RECOMMENDED MOUNTING HOLE: 0.89±0.08 [.035±.003] DIA
- 2 POINT OF MEASUREMENT FOR PLATING THICKNESS
- 3 0.00076 [.000030] GOLD IN CONTACT AREA, GOLD FLASH ON REMAINDER OF POST, ALL OVER 0.00013 [.000050] NICKEL
- 4 OBSOLETE PART NUMBER
- 5 OBSOLETE PARTS: OBSOLETE CIS STREAMLINING PER D.RENAUD/D.SINISI

DO NOT SCALE PRINT. UNLESS SPECIFIED DIMENSIONS IN mm [INCHES] TOLERANCES ON : 2 PLC DEC ± - 3 PLC DEC ± 0.13 [.005] ANGLES ± -		DR 6-22-89 J GALLUCCI			
MATERIAL HOUSING: GLASS FILLED NYLON, COLOR-BLACK POST: PHOS BRONZE FINISH		CHK 6-29-89 B SPINK			
APPLICATION SPEC		APPD 6-29-89 B. SPINK		NAME	
WEIGHT		APPD 6-29-89 FLINCHBAUGH		HDR ASSY, MOD II, RTANG, .150	
SCALE		PRODUCT SPEC		DRAWING NO	
4:1		-		87236	
REV		APPLICATION SPEC		REV	
K2		-		K2	
SHEET		-		SHEET	
1 OF 1		-		1 OF 1	