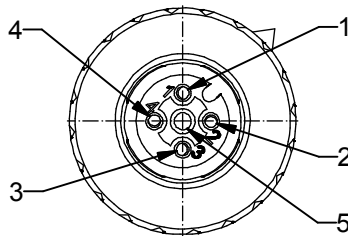
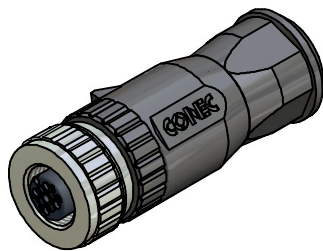


4pos



5pos



Directive 2002/95/EC  
„RoHS“  
Compliant

**Technical specification:**

Rated voltage: IEC 61076-2-101	4pos 250 V	5pos 60 V
Current rating: IEC 61076-2-101	4A at 40°C	
Insulation resistance: IEC 60512-2	>=10 GΩ	
Pollution degree: IEC 60664-1	3/2	
Degree of protection: IEC 60529	IP 67, in mated condition	
Temperature range: IEC 60664-1	-30°C ... +85°C	
Mating cycles: IEC 60512-9a	<=100	
Wire cross section:	AWG18 / max. 0,75mm <sup>2</sup>	

**Materials:**

Contact:	CuZn
Contact plating:	Nickel, gold plated
Contact carrier:	PA6, UL 94
Screw:	Steel, nickel plated
Cable sealing:	Elastomere
O-Ring:	FPM
Coupling nut:	Die cast, nickel plated
Housing:	PA6 GF, UL 94

	Part no:	Description:	Pos:	Cable-Ø:
Screw connection	43-00091	SAL - 12 - RKC4 - S6/075	4	4 - 6mm
	43-00092	SAL - 12 - RKC4 - S8/075	4	6 - 8mm
	43-00093	SAL - 12 - RKC5 - S6/075	5	4 - 6mm
	43-00094	SAL - 12 - RKC5 - S8/075	5	6 - 8mm

DO NOT ALTER CAD DRAWING BY HAND	Status: 19.01.09 db	dim. in mm	<b>title: Female connector M12x1, field attachable, axial, screw connection</b>		
	tolerance: ISO 2768-m				
	THIS DRAWING MAY NOT BE COPIED OR REPRODUCED IN ANY WAY, AND MAY NOT BE PASSED ON TO A THIRD PARTY WITHOUT WRITTEN PERMISSION. OWNERSHIP AND COPYRIGHT OF CONEC GmbH	drawn 19.01.09 Burschik	date 19.01.09	<div style="display: flex; justify-content: space-between;"> <span>dwg no:</span> <span>Inventor 10</span> </div> <div style="text-align: center; font-size: large; font-weight: bold; margin: 10px 0;">43K1A834</div> <div style="display: flex; justify-content: space-between;"> <span>part no:</span> </div>	
		appd. 19.01.09 Schmidt			