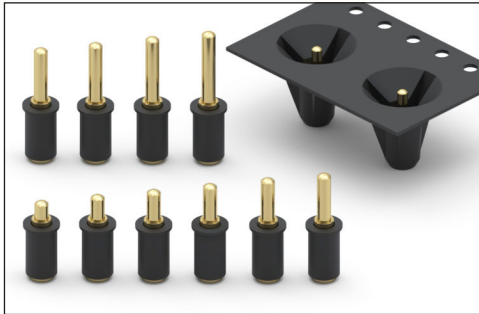


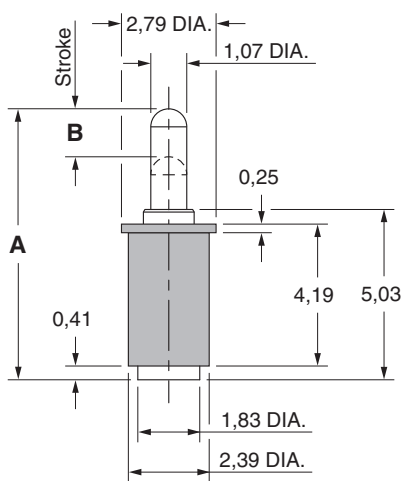
SPRING-LOADED CONNECTORS

SERIES 807 • DISCRETE INSULATED SPRING-LOADED PINS • SURFACE MOUNT

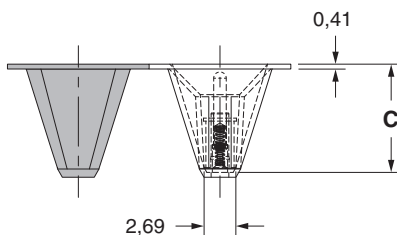


- Discrete insulated spring-loaded pins; available in ten heights from 6,48 to 10,92, with working travel of 0,7
- Precision-machined piston / base and gold-plated components assure a 1,000,000 cycle life durability
- Low resistance contacts are rated at 2 amps continuous, 3 amps peak
- High temperature thermoplastic insulators are suitable for most SMT soldering processes
- 807 series, contact styles 0 through 9, are available in bulk or on 16mm wide carrier tape for automated pick and place assembly. Tape and Reel packaging per EIA-481. See below for ordering information

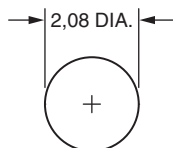
Series 807 (Contact Style 0-9)



Series 807 (Tape Pocket Depth)



Series 807 (Suggested footprint layout)



ORDERING INFORMATION

Series 807 (Bulk Packaged)

807-22-001-30-01X101

Specify contact style 0-9

Series 807 (Tape & Reel Packaged)

807-22-001-30-01X191

Specify contact style 0-9

Contact Style	Initial Height (A)	Working Travel	Full Stroke Range (B)	Tape Depth (C)	Quantity per Reel
0	6,48	0,7	1,14-1,4	7,24	750
1	6,99	0,7	1,14-1,4	7,24	750
2	7,49	0,7	1,14-1,4	8,28	600
3	8,0	0,7	1,14-1,4	8,28	600
4	8,51	0,7	1,14-1,4	9,17	550
5	8,89	0,7	1,14-1,4	9,17	550
6	9,4	0,7	1,14-1,4	10,19	475
7	9,91	0,7	1,14-1,4	10,19	475
8	10,41	0,7	1,14-1,4	11,2	430
9	10,92	0,7	1,14-1,4	11,2	430

Technical Specifications

Materials:

Contact piston & base: Machined copper alloy plated 0,51µm gold over 2,54µm nickel
Spring (Contact style 0-9): Beryllium copper-plated 0,25µm gold
Insulator: High temperature thermoplastic, rated UL94 V-0

Mechanical:

Spring force @ initial height (A) (Contact style 0-9): 25 grams
Spring force @ mid stroke (B/2) (Contact style 0-9): 60 grams
Durability: 1,000,000 cycles

Electrical:

Current rating: 2A (continuous), 3A (peak) per contact
Contact resistance: 20mΩ max.
Insulation resistance: 10,000MΩ min.
Dielectric strength: 700Vrms min.

RoHS - 2
2011/65/EU