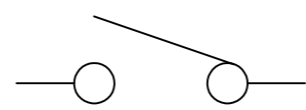
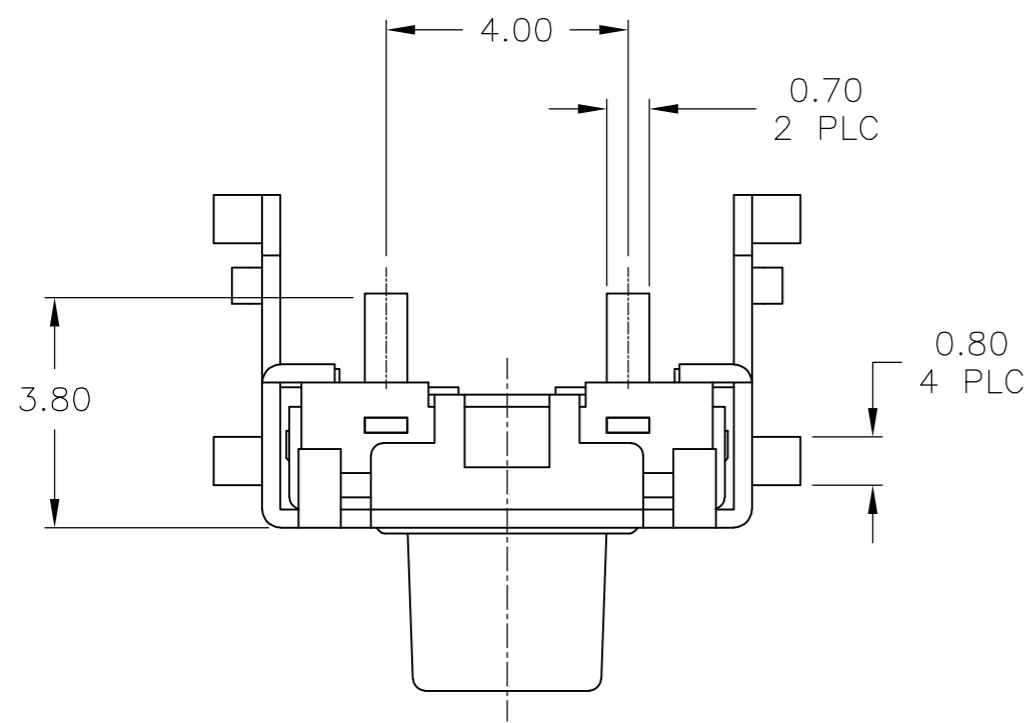


THIS DRAWING IS UNPUBLISHED. RELEASED FOR PUBLICATION
 © COPYRIGHT - By - ALL RIGHTS RESERVED.

| LOC | | DIST | | REVISIONS | | | |
|-----|-----|-------------|--|---------------------------|---------|------|----|
| P | LTR | DESCRIPTION | | DATE | DWN | APVD | |
| AD | 00 | J | | REVISED PER ECO-11-020538 | 13OCT11 | KH | MW |



CIRCUIT DIAGRAM

SPECIFICATIONS

MATERIALS

CASE: THERMOPLASTIC, UL94V-0, BLACK
 ACTUATOR: THERMOPLASTIC, UL94V-0, BLACK
 COVER: NICKEL SILVER
 SEAL: SILICON RUBBER, BLACK
 CONTACT: STAINLESS STEEL, PLATING-SILVER
 TERMINAL: BRASS, PLATING-SILVER/NICKEL
 BRACKET: CARBON STEEL, PLATING-TIN/NICKEL

ELECTRICAL

MAX CONTACT RATING: 50MILLIAMPS@24V DC
 MIN CONTACT RATING: 10MICROAMPS@1V DC
 INITIAL CONTACT RESISTANCE: 100 MILLIOHMS MAX, PER EIA RS-448, METHOD 1
 INSULATION RESISTANCE: 100 MEGOHMS MIN @ 100VDC PER EIA RS-186-13E
 DIELECTRIC STRENGTH: 500 VAC 50/60 Hz FOR 1 MINUTE PER EIA RS-186-4E
 CONTACT BOUNCE: 10 MILLISECOND MAX PER EIA-448-18, METHOD 15

MECHANICAL

ACTUATOR OPERATING FORCE: SEE TABLE
 ACTUATOR TRAVEL: 0.35±0.2mm

DURABILITY

UP TO 1,000,000 CYCLES, AT RATED LOAD PER EIA-RS-448, METHOD 8
 FINAL CONTACT RESISTANCE: 200 MILLIOHMS MAX
 CONTACT BOUNCE: 20 MILLISECONDS MAX
 ACTUATOR FORCE: WITHIN ±30% OF INITIAL VALUE

ENVIRONMENTAL

OPERATING TEMPERATURE RANGE: -35°C to +85°C
 STORAGE TEMPERATURE RANGE: -35°C to +85°C
 HUMIDITY: 96 HOURS PER EIA-186-1E
 INSULATION RESISTANCE: 10 MEGOHMS MIN
 DIELECTRIC STRENGTH: 250VAC
 CONTACT RESISTANCE: 100 MILLIOHMS MAX
 DRY HEAT TEST: 85°C FOR 96 HOURS PER IEC 60068-2-2, TEST B,
 NO CHANGE IN INITIAL ELECTRICAL AND MECHANICAL CHARACTERISTICS
 COLD TEST: -35°C FOR 96 HOURS PER IEC 60068-2-1, TEST A;
 NO CHANGE IN INITIAL ELECTRICAL AND MECHANICAL CHARACTERISTICS
 THERMAL CYCLING: 5 CYCLES, -35°C to +85°C
 HUMIDITY-TEMPERATURE CYCLING, EIA 364-31B, METHOD III
 CONTACT RESISTANCE 100 MILLIOHMS MAX
 RESISTANCE TO SOLDERING HEAT PER 109-202, COND B

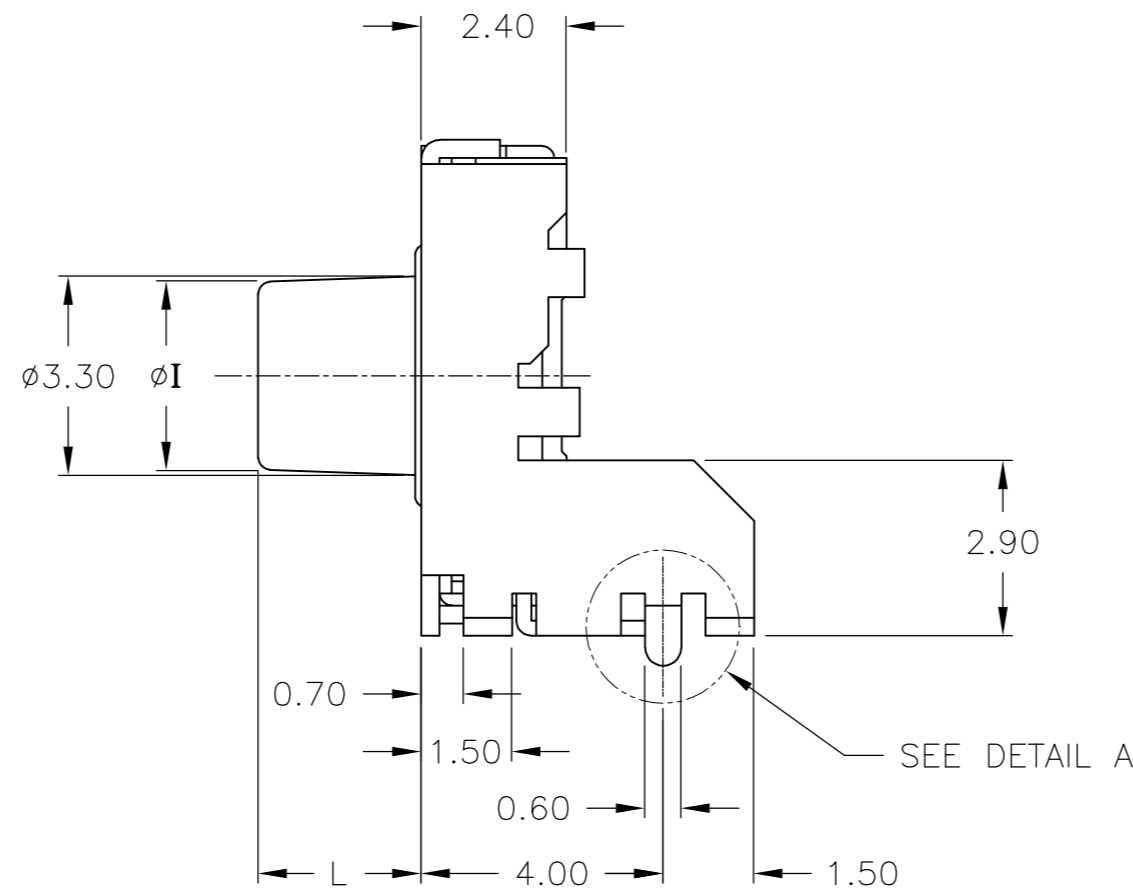
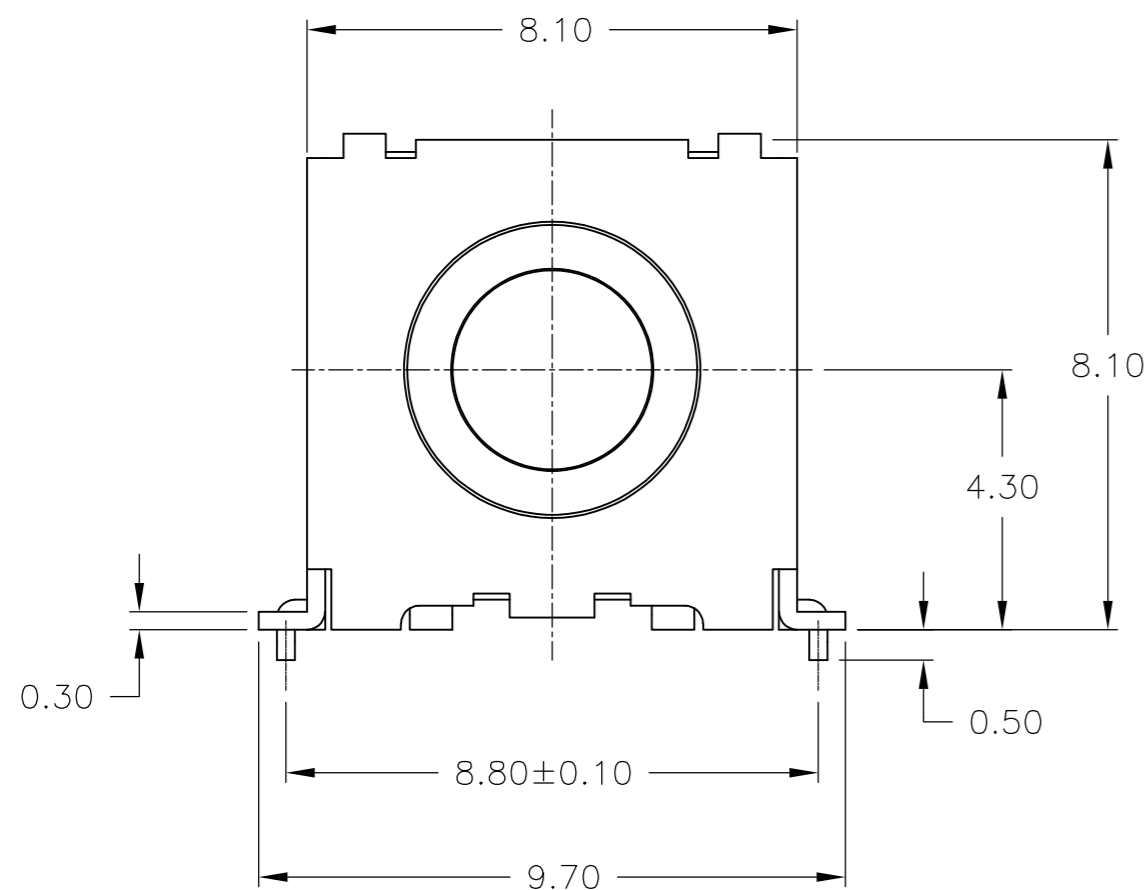
SOLDERABILITY: PER EIA RS-186-9E

SEALED PER IP67

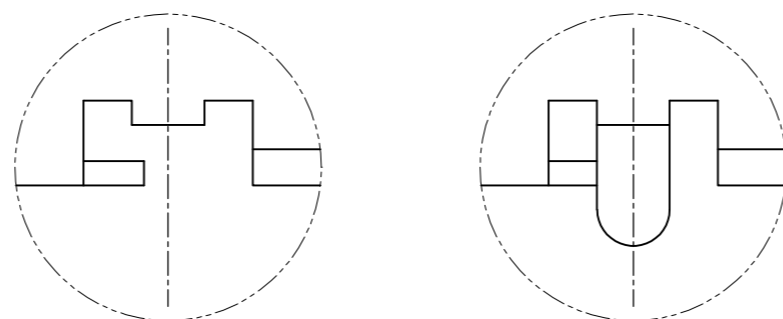
NOTES:

- ALL MATERIALS AND FINISHES SHALL COMPLY WITH EU DIRECTIVE 2002/95/EC OF 27JAN2003 (ROHS)

| | WITH GUIDE PIN | BULK | 130±50gf | 3.1 | 2.7 | 1571300-2 |
|----------|-------------------|-----------|-----------------|-----|-----|----------------|
| OBsolete | WITHOUT GUIDE PIN | BULK | 130±50gf | 3.1 | 2.7 | 1571300-1 |
| | DETAIL A | PACKAGING | OPERATING FORCE | I | L | TE PART NUMBER |

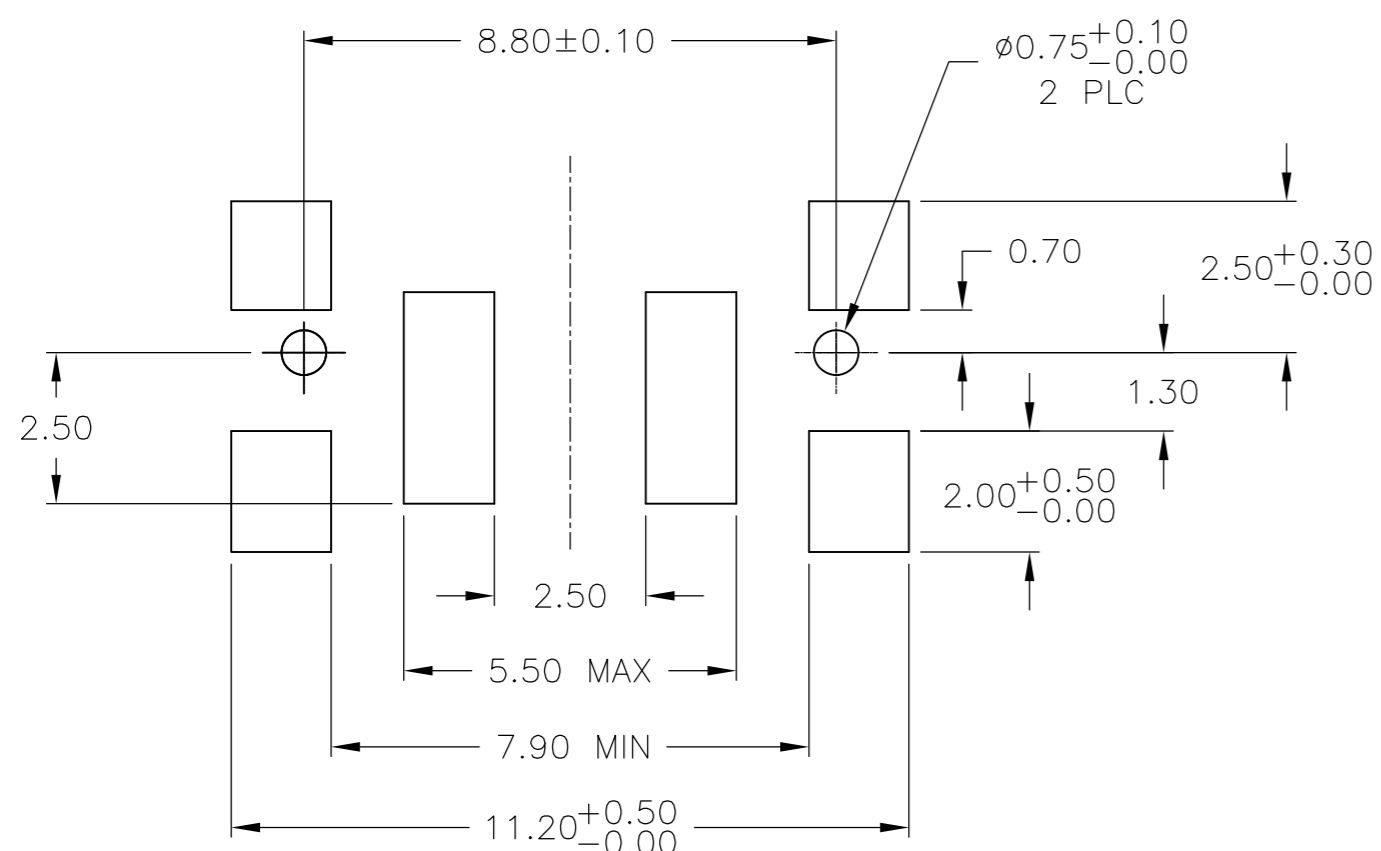


SEE DETAIL A



WITHOUT GUIDE PIN WITH GUIDE PIN

DETAIL A



P.C.B MOUNTING SOLDER LAND DIMENSION

| | | | | | | |
|--|--------|------------------|----------|--|------|-----|
| THIS DRAWING IS A CONTROLLED DOCUMENT. | | DWN | R BROWN | 18DEC02 | | |
| DIMENSIONS: mm | | CHK | M SARVER | 18DEC02 | | |
| TOLERANCES UNLESS OTHERWISE SPECIFIED: | | APVD | M SARVER | 18DEC02 | NAME | |
| 0 PLC | ± - | PRODUCT SPEC | | SWITCH ASSEMBLY, TACTILE, RIGHT ANGLE, SMT, SEALED | | |
| 1 PLC | ± - | APPLICATION SPEC | | SIZE | | |
| 2 PLC | ± 0.30 | - | | CAGE CODE | | |
| 3 PLC | ± - | - | | DRAWING NO | | |
| 4 PLC | ± - | - | | RESTRICTED TO | | |
| ANGLES | ± - | - | | A2 00779 C=1571300 | | |
| MATERIAL | FINISH | WEIGHT | | SCALE | | |
| - | - | - | | 8:1 | | |
| CUSTOMER DRAWING | | | | SHEET | | REV |
| | | | | 1 OF 1 | | J |