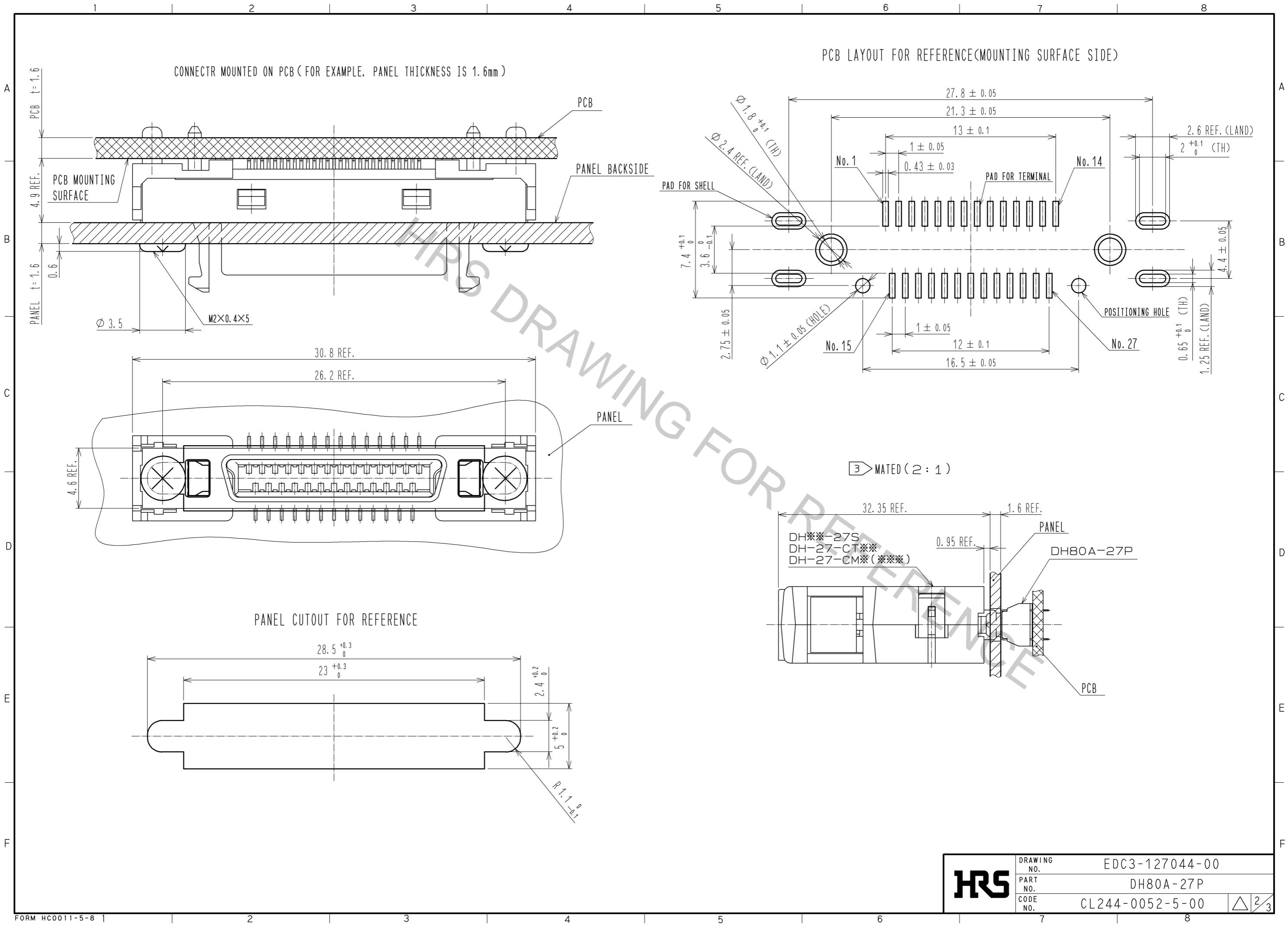


NO.	MATERIAL	FINISH . REMARKS	NO.	MATERIAL	FINISH . REMARKS
3	STAINLESS STEEL	LEAD AREA : TIN 3μm MIN UNDER PLATING : NICKEL 1μm MIN	7	PP	
2	PHOSPHOR BRONZE	CONTACT AREA : GOLD 0.2μm MIN LEAD AREA : GOLD 0.03μm MIN UNDER PLATING : NICKEL 1μm MIN	6	PICK & PLACE TAPE	
1	POLYAMIDE	BLACK UL94V-0	5	STEEL	OVER PLATING : NICKEL 3μm MIN UNDER PLATING : COPPER 3μm MIN
			4	STEEL	OVER PLATING : NICKEL 3μm MIN UNDER PLATING : COPPER 3μm MIN

UNITS	SCALE	COUNT	DESCRIPTION OF REVISIONS	DESIGNED	CHECKED	DATE
mm	4 : 1	△				
APPROVED : A0. SUZUKI			10.09.02	DRAWING NO. EDC3-127044-00		
CHECKED : KN. ICHIKAWA			10.09.02	PART NO. DH80A-27P		
DESIGNED : MO. SHIMOYAMA			10.09.02	CODE NO. CL244-0052-5-00		
DRAWN : MO. SHIMOYAMA			10.09.02	△ 1/3		

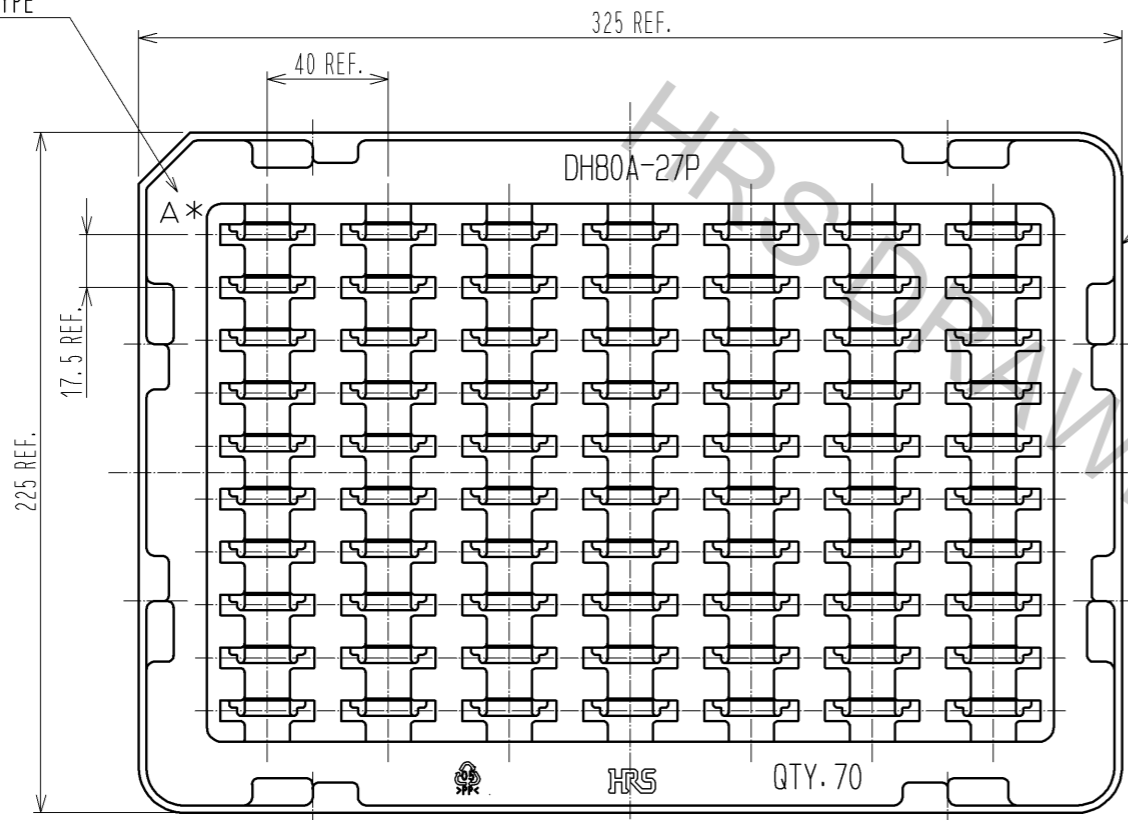
Apr.1.2017 Copyright 2017 HIROSE ELECTRIC CO., LTD. All Rights Reserved.



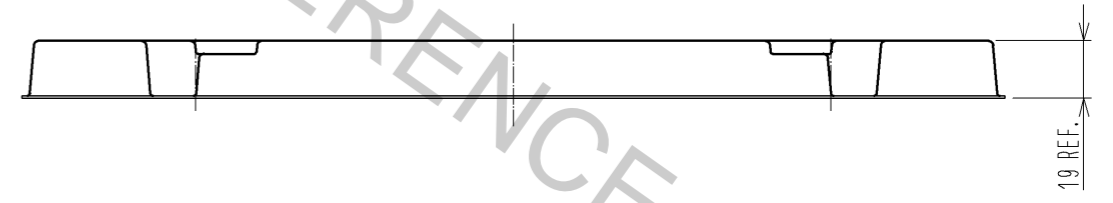
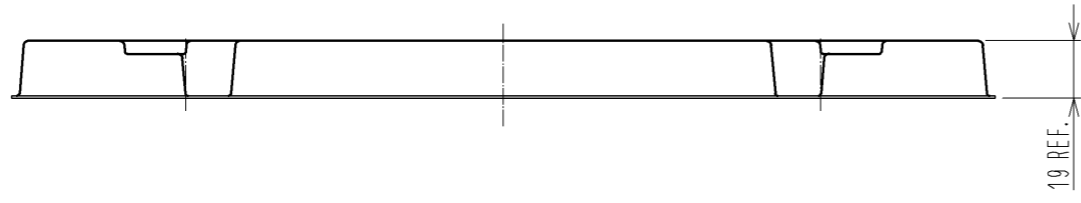
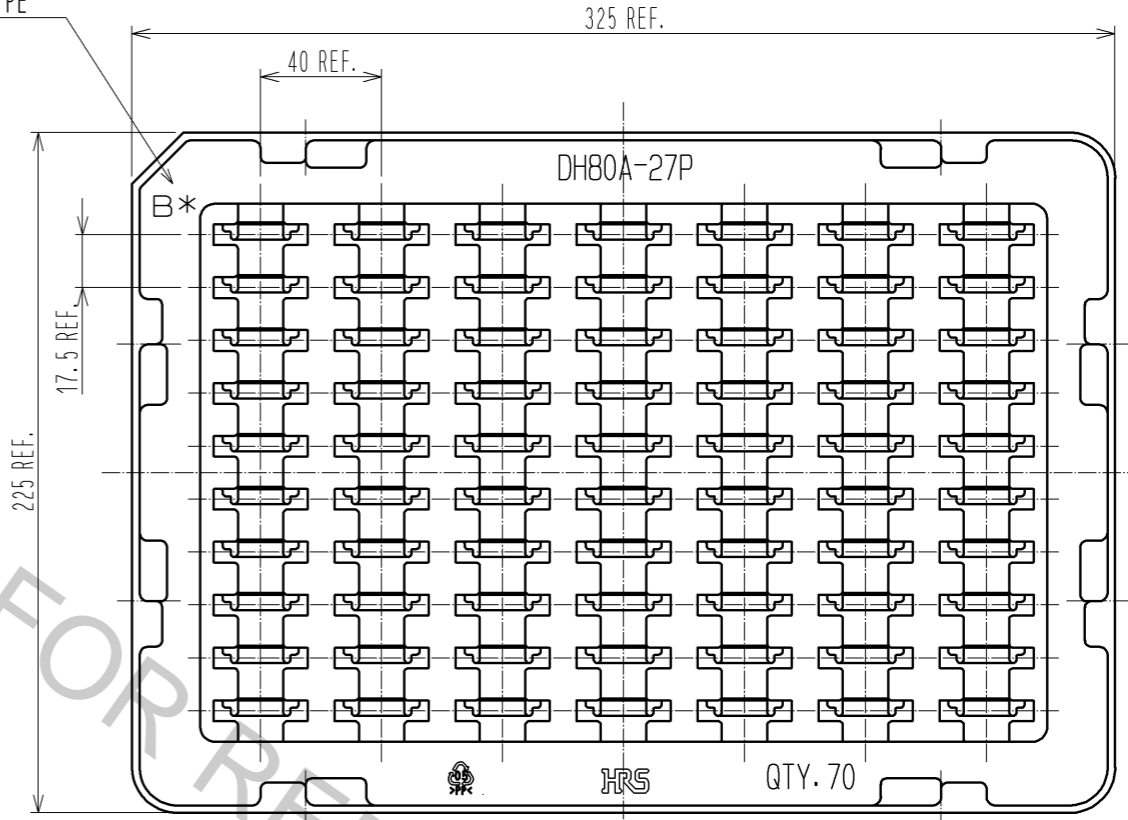
HRS	DRAWING NO.	EDC3-127044-00
	PART NO.	DH80A-27P
	CODE NO.	CL244-0052-5-00
		2/3

DRAWING FOR PACKING(FREE)


TRAY KEY TYPE
(A TYPE)



TRAY KEY TYPE
(B TYPE)



※TRAYS, A TYPE AND B TYPE, ARE PILED UP ALTERNATELY.

HRS	DRAWING NO.	EDC3-127044-00	 3/3
	PART NO.	DH80A-27P	
	CODE NO.	CL244-0052-5-00	